

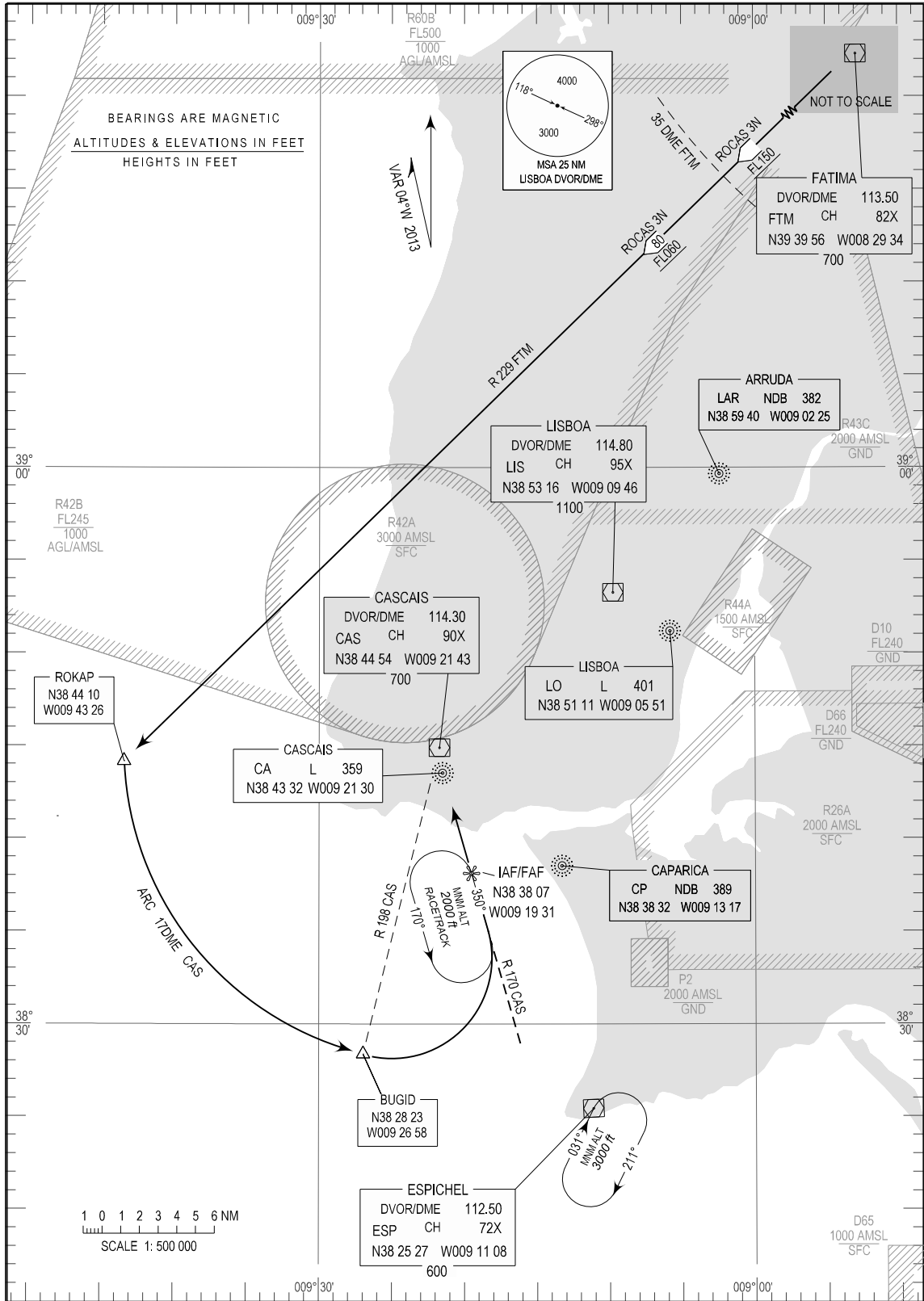
STANDARD ARRIVAL CHART -
INSTRUMENT (STAR) - ICAO

CASCAIS (LPCS)
RWY 35

TRANSITION ALTITUDE
4000

LISBOA APP 119.100
CASCAIS TWR 120.300

ROCAS 3N



STANDARD INSTRUMENT ARRIVAL (STAR) RWY 35

RUNWAY 35		
Designator	Route	Remarks
ROCAS3N	At FTM DVOR/DME intercept RDL229, not below FL150 until DME35. At ROKAP (FTM DME80), not below FL 060 turn left and proceed on CAS DVOR/DME ARC 17 descending to 2000 FT, to reach prior crossing RDL198 CAS DVOR/DME, (BUGID). At BUGID maintaining 2000 FT, turn left to intercept RDL170 CAS DVOR/DME. Proceed to IAF/FAF.	Pending on Military Traffic Conditions