

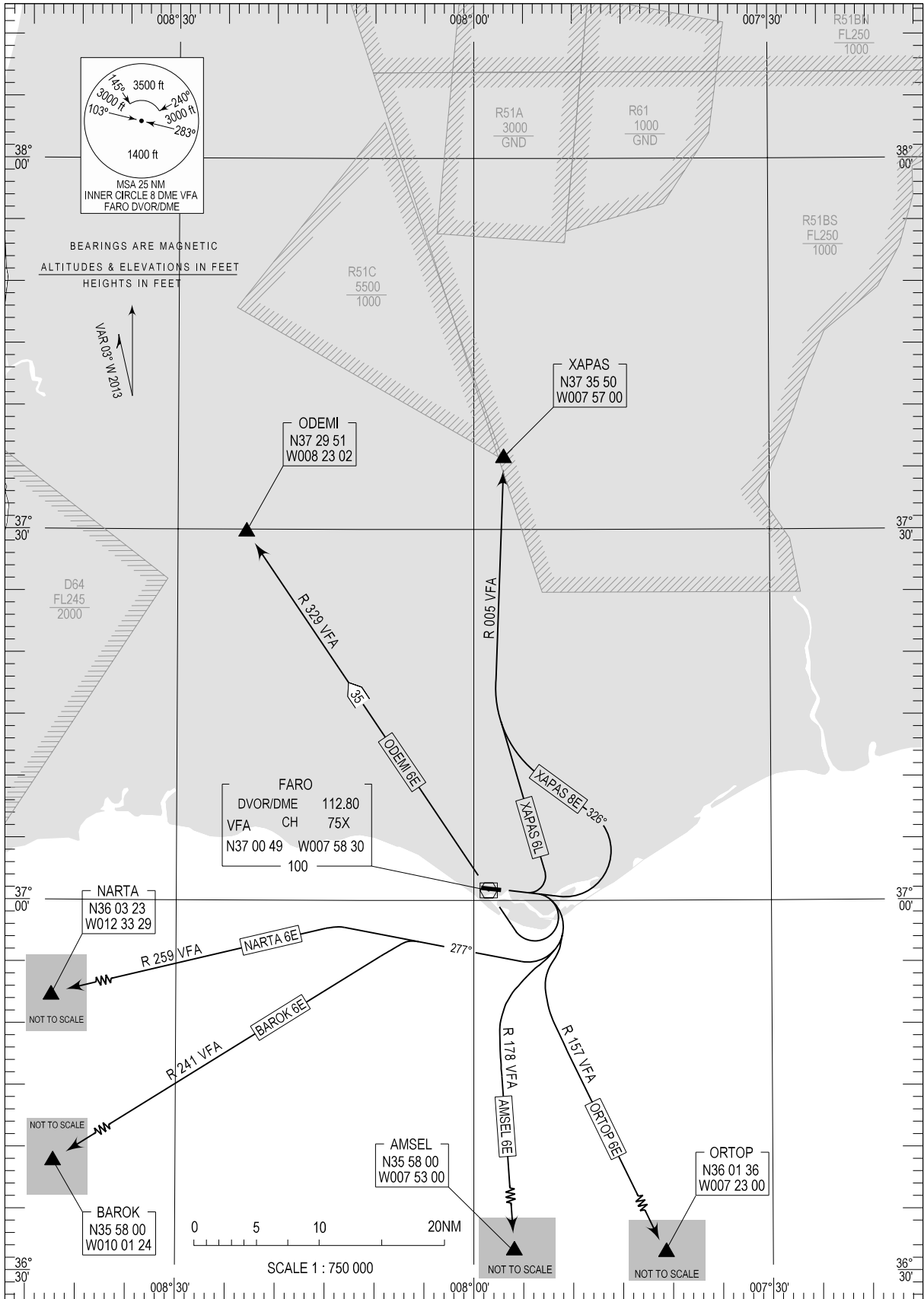
STANDARD DEPARTURE CHART -
INSTRUMENT (SID) - ICAO

FARO

RWY 10

TRANSITION ALTITUDE
4000
TWR 120.750
APP 119.400
ACC 125.550

AMSEL 6E, BAROK 6E, NARTA 6E
ODEMI 6E, ORTOP 6E, XAPAS 8E, XAPAS 6L



New MAG Variation

STANDARD INSTRUMENT DEPARTURE (SID) RWY 10

RUNWAY 10				
Designator	Route	After Take-off		Remarks
		Climb to ALT / FL	Contact	
AMSEL 6E	Turn right to intercept and proceed on RDL 178 VFA DVOR/DME to AMSEL	FL060	FARO APPROACH 119.400 MHZ	
BAROK 6E	Turn right to track 277° to intercept and proceed on RDL 241 VFA DVOR/DME to BAROK	FL060		
NARTA 6E	Turn right to track 277° to intercept and proceed on RDL 259 VFA DVOR/DME to NARTA	FL060		
ODEMI 6E	Turn right to VFA DVOR/DME; proceed on RDL 329 VFA DVOR/DME to ODEMI	FL060		Cross VFA DVOR/DME at 2500FT QNH or above
ORTOP 6E	Turn right to intercept and proceed on RDL 157 VFA DVOR/DME to ORTOP	FL060		
XAPAS8E	Climb on Runway heading. When passing 3000FT QNH but not before 4NM VFA DVOR/DME, turn left track 326 to intercept and proceed on Radial 005 VFA DVOR/DME to XAPAS.	FL060		
XAPAS 6L	Turn left to intercept and proceed on RDL005 VFA DVOR/DME to XAPAS	FL060		For light Aircraft only