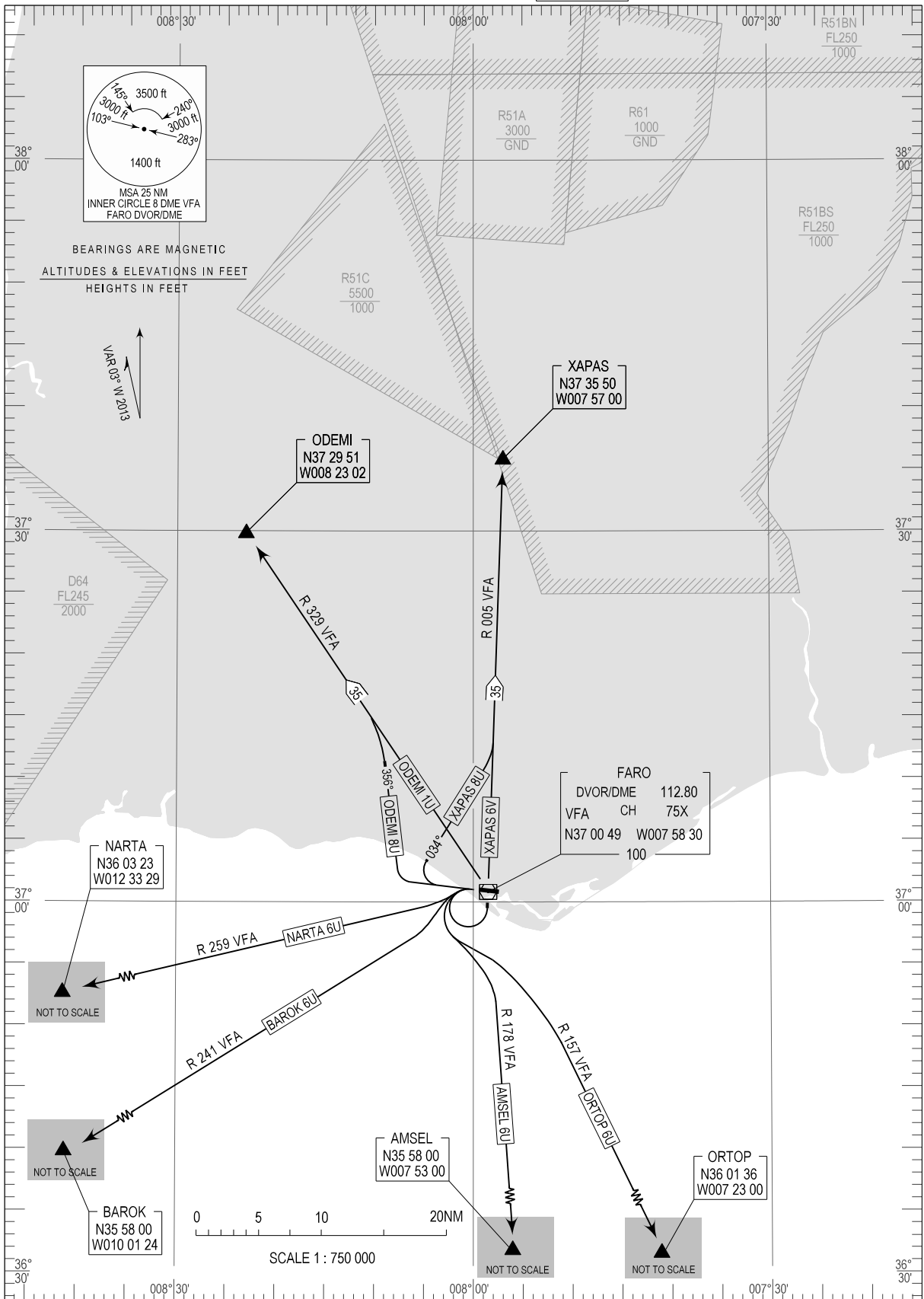


STANDARD DEPARTURE CHART - INSTRUMENT (SID) - ICAO

FARO RWY 28

TRANSITION ALTITUDE	TWR 120.750
4000	APP 119.400
	ACC 125.550

AMSEL 6U, BAROK 6U, NARTA 6U, ODEMI 8U
ODEMI 1U, ORTOP 6U, XAPAS 8U, XAPAS 6V



SID designation ODEMI8V changed to ODEMI 1U

STANDARD INSTRUMENT DEPARTURE (SID) RWY 28

RUNWAY 28				
Designator	Route	After Take-off		Remarks
		Climb to ALT / FL	Contact	
AMSEL6U	Turn left to intercept and proceed on RDL 178 VFA DVOR/DME to AMSEL	FL060	FARO APPROACH 119.400 MHZ	
BAROK6U	Turn left to intercept and proceed on RDL 241 VFA DVOR/DME to BAROK	FL060		
NARTA6U	Turn left to intercept and proceed on RDL 259 VFA DVOR/DME to NARTA	FL060		
ODEMI8U	Climb on Runway heading. When passing 3000FT QNH but not before 4NM VFA DVOR/DME, turn right track 356 to intercept and proceed on Radial 329 VFA DVOR/DME to ODEMI.	FL060		To be used only BTN 0800 to 2200 Alternative ODEMI1U
ODEMI1U	Turn left to VFA DVOR/DME proceed on RDL329 VFA DVOR/DME to ODEMI	FL060		Cross VFA DVOR/DME at 2500FT QNH or above
ORTOP6U	Turn left to intercept and proceed on RDL157 VFA DVOR/DME to ORTOP	FL060		
XAPAS8U	Climb on Runway heading. When passing 3000FT QNH but not before 4NM VFA DVOR/DME, turn right track 034° to intercept and proceed on Radial 005 VFA DVOR/DME to XAPAS.	FL060		To be used BTN 0800 to 2200. Alternative XAPAS 6V
XAPAS6V	Turn left to VFA DVOR/DME proceed on RDL005 VFA DVOR/DME to XAPAS	FL060		Cross VFA DVOR/DME at 2500FT QNH or above