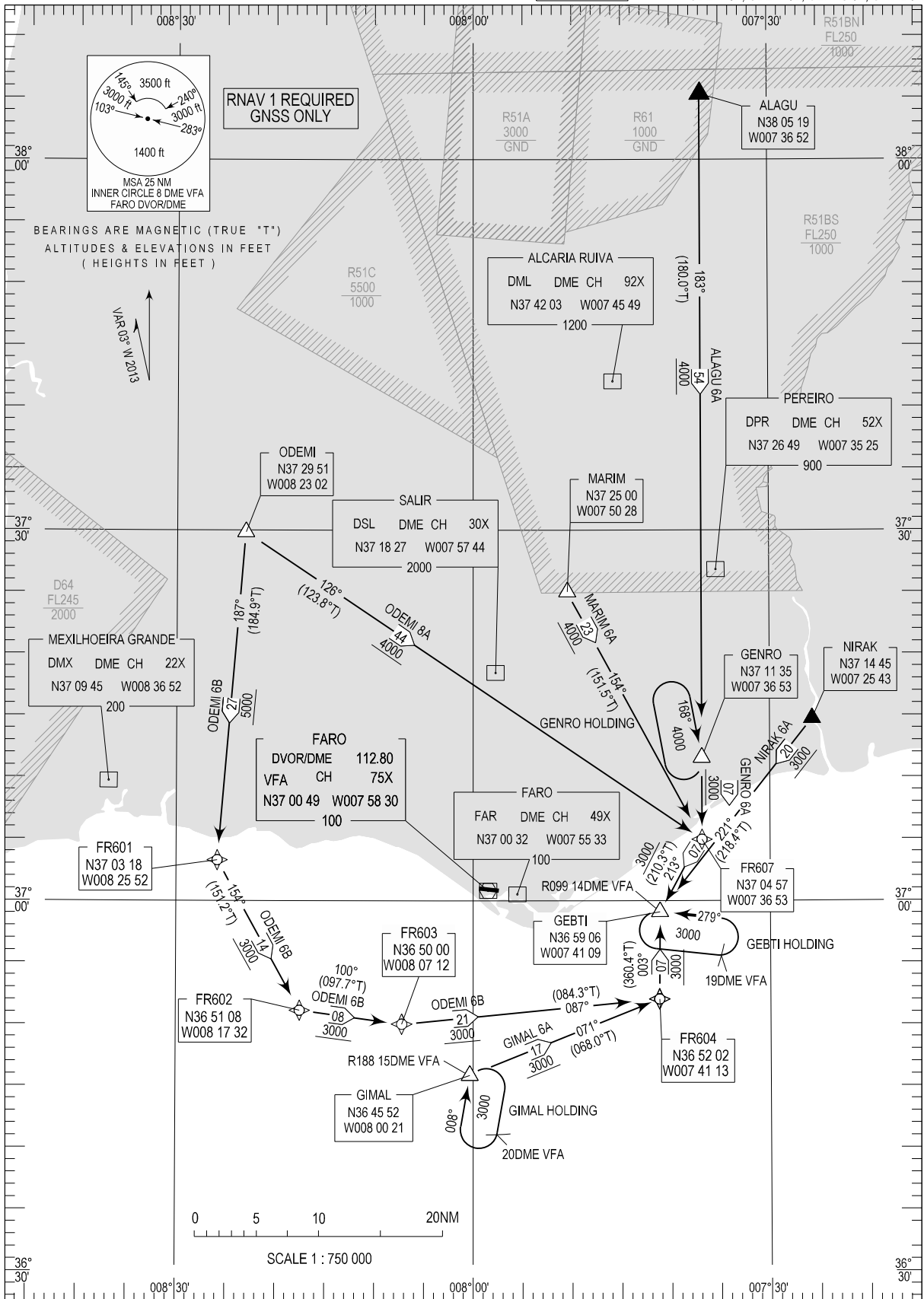


STANDARD ARRIVAL CHART - INSTRUMENT (STAR) - ICAO

FARO (LPFR) RNAV RWY 28

TRANSITION ALTITUDE 4000  
TWR 120.750  
APP 119.400  
ACC 125.550

ALAGU 6A, NIRAK 6A, MARIM 6A  
ODEMI 8A, ODEMI 6B, GENRO 6A, GIMAL 6A



STAR changed.

STANDARD INSTRUMENT ARRIVAL (STAR) RUNWAY 28										
RNAV 1 – GNSS ONLY										
STAR RNAV 1 ALAGU 6A RWY 28										
Procedure Coding Table										
Path Terminator	Waypoint			Course/ Track MAG (True)	Dist NM	Turn Direction	Constraints		Navigation Specification	Remarks
	Identifier	Flyover	Coordinates				Level	Speed		
IF	ALAGU	-	380519.34N 0073652.27W	-	-	-	+4000ft	-	RNAV 1	Clearance limit: GEBTI (IAF)
TF	GENRO	-	371134.51N 0073653.27W	183 (180.0)	53.7	-	+4000ft	-	RNAV 1	
TF	FR607	-	370457.31N 0073653.37W	183 (180.0)	6.6	-	+3000ft	-	RNAV 1	
TF	GEBTI	-	365905.99N 0074109.25W	213 (210.3)	6.8	Right	+3000ft	-	RNAV 1	

STAR RNAV 1 GENRO 6A RWY 28										
Path Terminator	Waypoint			Course/ Track MAG (True)	Dist NM	Turn Direction	Constraints		Navigation Specification	Remarks
	Identifier	Flyover	Coordinates				Level	Speed		
IF	GENRO	-	371134.51N 0073653.27W	-	-	-	+3000ft	-	RNAV 1	Clearance limit: GEBTI (IAF)
TF	FR607	-	370457.31N 0073653.37W	183 (180.0)	6.6	-	+3000ft	-	RNAV 1	
TF	GEBTI	-	365905.99N 0074109.25W	213 (210.3)	6.8	Right	+3000ft	-	RNAV 1	

STAR RNAV 1 GIMAL 6A RWY 28										
Path Terminator	Waypoint			Course/ Track MAG (True)	Dist NM	Turn Direction	Constraints		Navigation Specification	Remarks
	Identifier	Flyover	Coordinates				Level	Speed		
IF	GIMAL	-	364552.01N 0080021.09W	-	-	-	+3000ft	-	RNAV 1	Clearance limit: GEBTI (IAF)
TF	FR604	-	365202.37N 0074112.61W	071 (068.0)	16.6	-	+3000ft	-	RNAV 1	
TF	GEBTI	-	365905.99N 0074109.25W	003 (360.4)	7.1	-	+3000ft	-	RNAV 1	

STAR RNAV 1 MARIM 6A RWY 28										
Path Terminator	Waypoint			Course/ Track MAG (True)	Dist NM	Turn Direction	Constraints		Navigation Specification	Remarks
	Identifier	Flyover	Coordinates				Level	Speed		
IF	MARIM	-	372500.00N 0075027.97W	-	-	-	+4000ft	-	RNAV 1	Clearance limit: GEBTI (IAF)
TF	FR607	-	370457.31N 0073653.37W	154 (151.5)	22.8	-	+4000ft	-	RNAV 1	
TF	GEBTI	-	365905.99N 0074109.25W	213 (210.3)	6.8	Right	+3000ft	-	RNAV 1	

STAR RNAV 1 NIRAK 6A RWY 28										
Path Terminator	Waypoint			Course/ Track MAG (True)	Dist NM	Turn Direction	Constraints		Navigation Specification	Remarks
	Identifier	Flyover	Coordinates				Level	Speed		
IF	NIRAK	-	371445.00N 0072543.00W	-	-	-	+3000ft	-	RNAV 1	Clearance limit: GEBTI (IAF)
TF	GEBTI	-	365905.99N 0074109.25W	221 (218.4)	19.9	-	+3000ft	-	RNAV 1	

STAR RNAV 1 ODEMI 8A RWY 28										
Path Terminator	Waypoint			Course/ Track MAG (True)	Dist NM	Turn Direction	Constraints		Navigation Specification	Remarks
	Identifier	Flyover	Coordinates				Level	Speed		
IF	ODEMI	-	372951.02N 0082302.44W	-	-	-	+4000ft	-	RNAV 1	Clearance limit: GEBTI (IAF)
TF	FR607	-	370457.31N 0073653.37W	126 (123.8)	44.4	-	+4000ft	-	RNAV 1	
TF	GEBTI	-	365905.99N 0074109.25W	213 (210.3)	6.8	Right	+3000ft	-	RNAV 1	

STAR RNAV 1 ODEMI 6B RWY 28										
Path Terminator	Waypoint			Course/ Track MAG (True)	Dist NM	Turn Direction	Constraints		Navigation Specification	Remarks
	Identifier	Flyover	Coordinates				Level	Speed		
IF	ODEMI	-	372951.02N 0082302.44W	-	-	-	+5000ft	-	RNAV 1	Clearance limit: GEBTI (IAF)
TF	FR601	-	370318.42N 0082551.86W	187 (184.9)	26.6	-	+5000ft	-	RNAV 1	
TF	FR602	-	365107.58N 0081732.18W	154 (151.2)	13.9	Left	+3000ft	-	RNAV 1	
TF	FR603	-	365000.01N 0080711.88W	100 (097.7)	8.4	Left	+3000ft	-	RNAV 1	
TF	FR604	-	365202.37N 0074112.61W	087 (084.3)	21.0	Left	+3000ft	-	RNAV 1	
TF	GEBTI	-	365905.99N 0074109.25W	003 (360.4)	7.1	Left	+3000ft	-	RNAV 1	