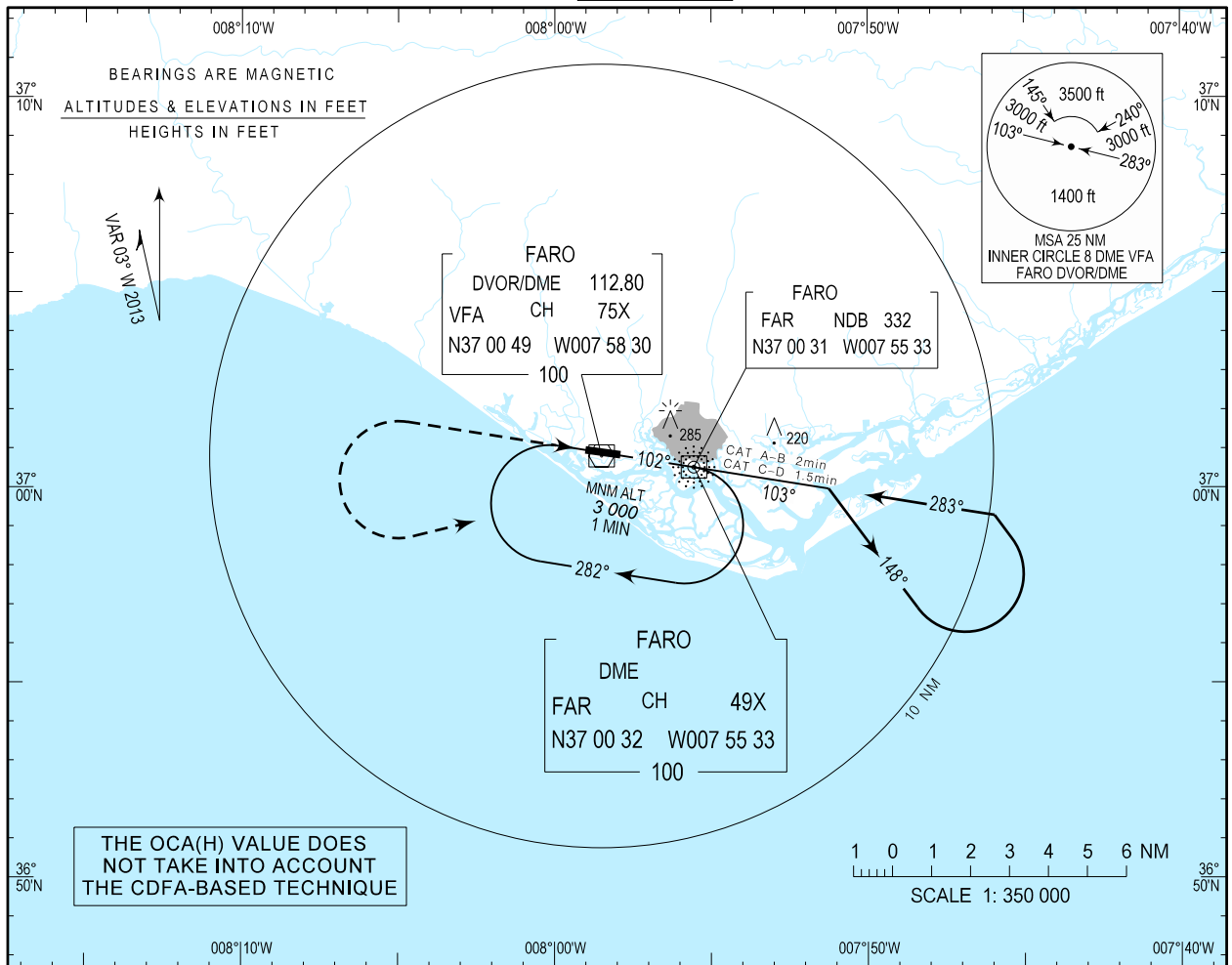


**INSTRUMENT
APPROACH
CHART - ICAO**

AD ELEV 24 ft
HEIGHTS RELATED
THR RWY 28 -ELEV 18 ft

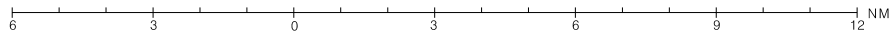
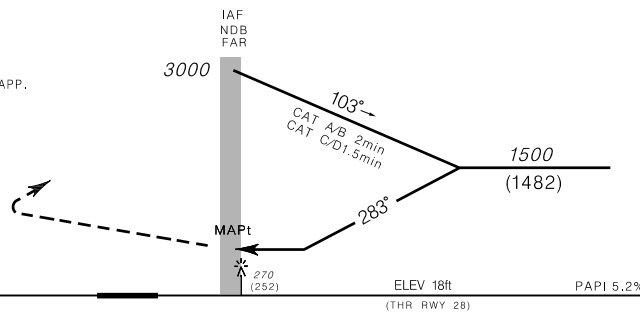
APP 119.400
TWR 120.750

FARO / LPFR
NDB
RWY28
CAT A-B-C-D



MISSED APPROACH
Climb straight ahead to 3000ft; at 2000ft turn left to FAR holding; CTC APP.

TRANSITION
ALTITUDE 4000 ft



CATEGORY	A	B	C	D	
OCA (H)					
STRAIGHT-IN	570(560)	570(560)	570(560)	570(560)	
CIRCLING	NOT AUTHORIZED				
	NORTH RWY10/28				
	SOUTH RWY10/28	570	570	620	720

New MAG Variation (2013)