

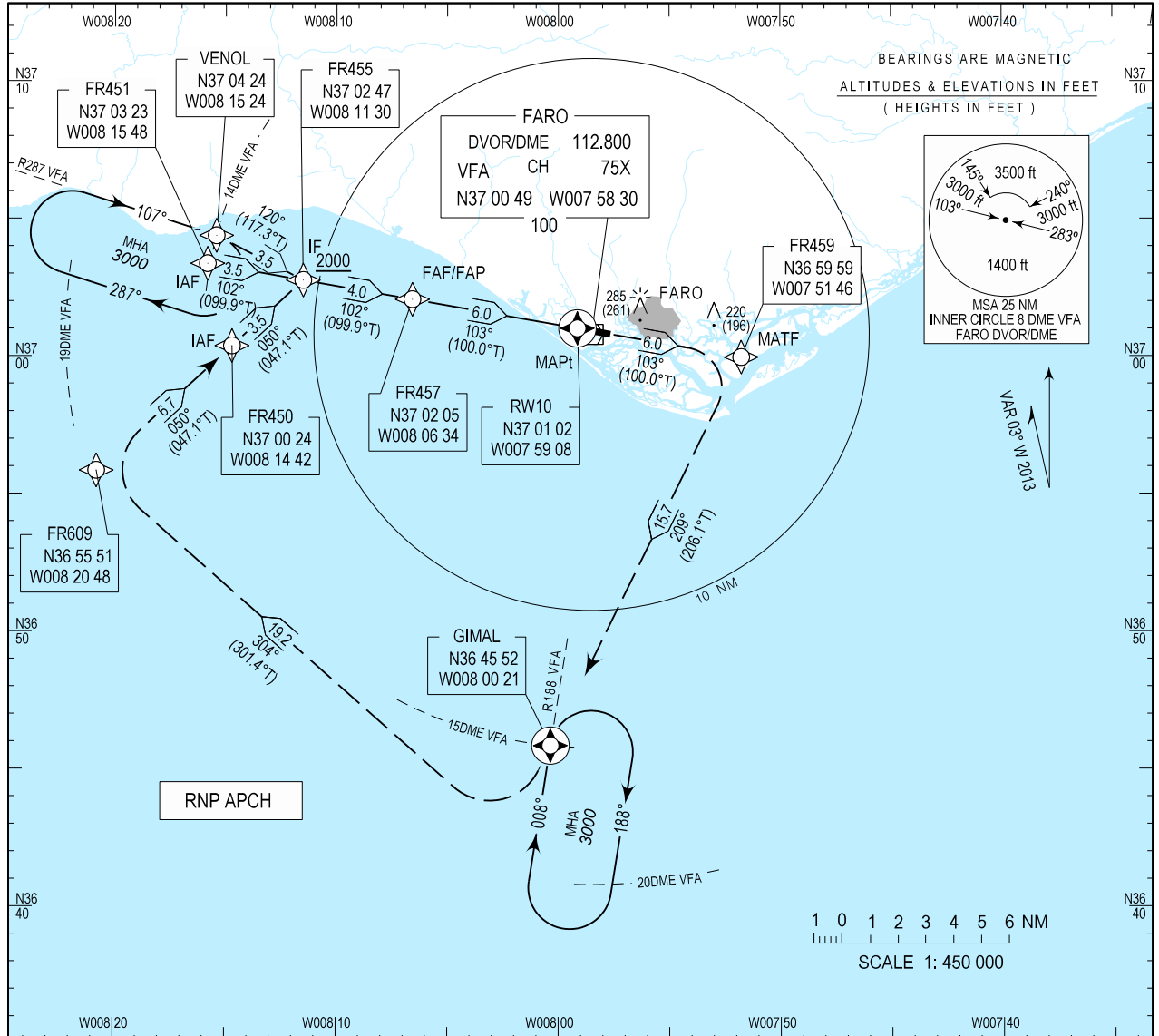
INSTRUMENT
APPROACH
CHART - ICAO

AD ELEV 24 ft
HEIGHTS RELATED
THR RWY 10 - ELEV 24 ft

FARO INFORMATION 124.205
FARO APPROACH 119.405
FARO TOWER 120.755
FARO GROUND 118.580

EGNOS
CH 97973
E10A
RDH: 50

FARO / LPFR
RNP RWY10

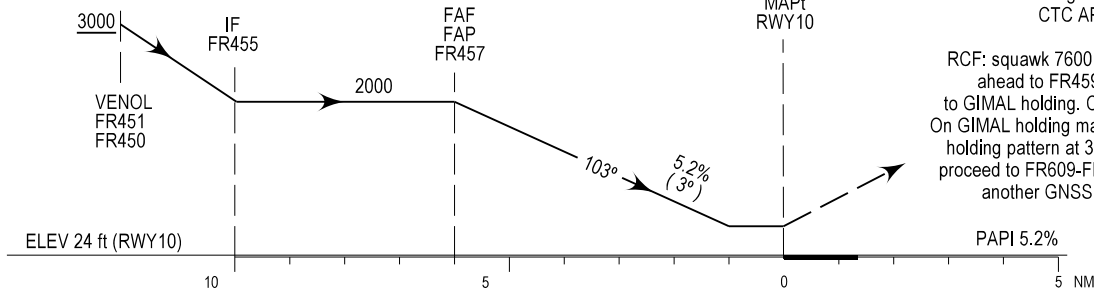


BARO-VNAV
minimum temperature: 0°C

TRANSITION
ALTITUDE 4000

MISSED APPROACH
Climb straight ahead to FR459, right turn
to GIMAL holding. Climb to 3000 ft.
CTC APP.

RCF: squawk 7600. Climb straight
ahead to FR459, right turn
to GIMAL holding. Climb to 3000 ft.
On GIMAL holding make one complete
holding pattern at 3000 ft and then
proceed to FR609-FR450 to perform
another GNSS approach.



| CAT | LPV | | LNAV/VNAV | | LNAV | | CIRCLING RWY10 | |
|-----|-----------|-----|-----------|-----|-----------|-----|----------------|----------------|
| | DA/H | OCH | DA/H | OCH | MDA/H | OCH | NORTH MDA/H | SOUTH MDA/H |
| A | 280 (256) | 172 | 380 (356) | 350 | 400 (376) | 367 | N/A | 450 (426) |
| B | 280 (256) | 185 | 380 (356) | 350 | 400 (376) | 367 | N/A | 520 (496) |
| C | 280 (256) | 193 | 380 (356) | 350 | 400 (376) | 367 | N/A | 620 (596) |
| D | 280 (256) | 203 | 380 (356) | 350 | 400 (376) | 367 | N/A | 720 (696) |

| DIST THR NM | 5 | 4 | 3 | 2 | 1 | |
|-----------------|-------------------|------------|------------|------------|----------|----------|
| | Altitude (Height) | 1680(1656) | 1360(1336) | 1045(1021) | 725(701) | 410(386) |
| Rate of descent | kt | 160 | 140 | 120 | 100 | 80 |
| | ft/min | 850 | 740 | 640 | 530 | 420 |

Chart identification changed.

Instrument Approach Procedure Coding Table
RNP RWY10

| Path Terminator | Waypoint | | | | Course/Track MAG (True) | Dist NM | Turn Direction | Constraints | | Navigation Specification | Remarks |
|-----------------|------------|---------|---------|------------------------|----------------------------|---------|-------------------|-------------|-------|-----------------------------|---------|
| | Identifier | Type | Flyover | Coordinates | | | | Level | Speed | | |
| IF | VENOL | IAF | - | 370423.82N 0081524.36W | - | - | - | +3000FT | - | RNP APCH | - |
| TF | FR455 | IF | - | 370246.67N 0081129.74W | 120 (117.3) | 3.52 | - | +2000FT | - | RNP APCH | - |
| IF | FR451 | IAF | - | 370322.82N 0081548.17W | - | - | - | +3000FT | - | RNP APCH | - |
| TF | FR455 | IF | - | 370246.67N 0081129.74W | 102 (099.9) | 3.50 | - | +2000FT | - | RNP APCH | - |
| IF | FR450 | IAF | - | 370023.52N 0081442.19W | - | - | - | +3000FT | - | RNP APCH | - |
| TF | FR455 | IF | - | 370246.67N 0081129.74W | 050 (047.1) | 3.50 | - | +2000FT | - | RNP APCH | - |
| IF | FR455 | IF | - | 370205.16N 0080634.48W | - | - | - | +2000FT | - | RNP APCH | - |
| TF | FR457 | FAP/FAF | - | 370205.16N 0080634.48W | 102 (099.9) | 4.00 | - | @2000FT | - | RNP APCH | - |
| TF | RW10 | MAPT | Y | 370102.00N 0075008.22W | 103 (100.0) | 6.05 | - | +200FT | - | RNP APCH | - |
| TF | FR459 | MATF | - | 365958.99N 0075145.67W | 103 (100.0) | 6.00 | - | - | - | RNP APCH | - |
| TF | GIMAL | - | Y | 364552.01N 0080021.09W | 209 (206.1) | 15.69 | R | @3000FT | - | RNP APCH | - |
| HM | GIMAL | HM | Y | 364552.01N 0080021.09W | - | - | R | @3000FT | - | RNP APCH | - |

RCF - PATH TERMINATOR

| Path Terminator | Waypoint | | | | Course/Track MAG (True) | Dist NM | Turn Direction | Constraints | | Navigation Specification | Remarks |
|-----------------|------------|------|---------|------------------------|----------------------------|---------|-------------------|-------------|-------|-----------------------------|---------|
| | Identifier | Type | Flyover | Coordinates | | | | Level | Speed | | |
| IF | GIMAL | HM | Y | 364552.01N 0080021.09W | - | - | R | @3000FT | - | RNAV1 | - |
| TF | FR609 | - | - | 365551.00N 0082048.00W | 304 (301.4) | 19.20 | R | +3000FT | - | RNAV1 | - |
| TF | FR450 | IAF | - | 370023.52N 0081442.19W | 050 (047.1) | 6.67 | R | +3000FT | - | RNAV1 | - |

FAS data block

| | |
|-------------------------------------|---------------|
| Operation Type | 0 |
| SBAS Provider | 1 |
| Airport Identifier | LPFR |
| Runway | 10 |
| Approach Performance Designator | 0 |
| Route Indicator | |
| Reference Path Data Selector | 0 |
| Reference Path Identifier | E10A |
| LTP/FTP Latitude | 370102.0000N |
| LTP/FTP Longitude | 0075908.2100W |
| LTP/FTP Ellipsoidal Height (metres) | 59.5M |
| FPAP Latitude | 370048.4215N |
| FPAP Longitude | 0075732.5495W |
| Threshold Crossing Height | 15.00M |
| Glidepath Angle (degrees) | 3.00 |
| Course Width (metres) | 105.00M |
| Length Offset (metres) | 0M |
| HAL (metres) | 40.0M |
| VAL (metres) | 50.0M |

Output data

| | |
|------------|---|
| Data block | 0 1 30 08 60 48 0A 0 0 20 00 A0 8C 0C 80 F0 47 AB 06 3F 49 35 39 68 CA FF A9 D7 40 D7 9A 81 34 80 34 64 00 C8 FA |
| CRC Value | AD CF 96 55 |