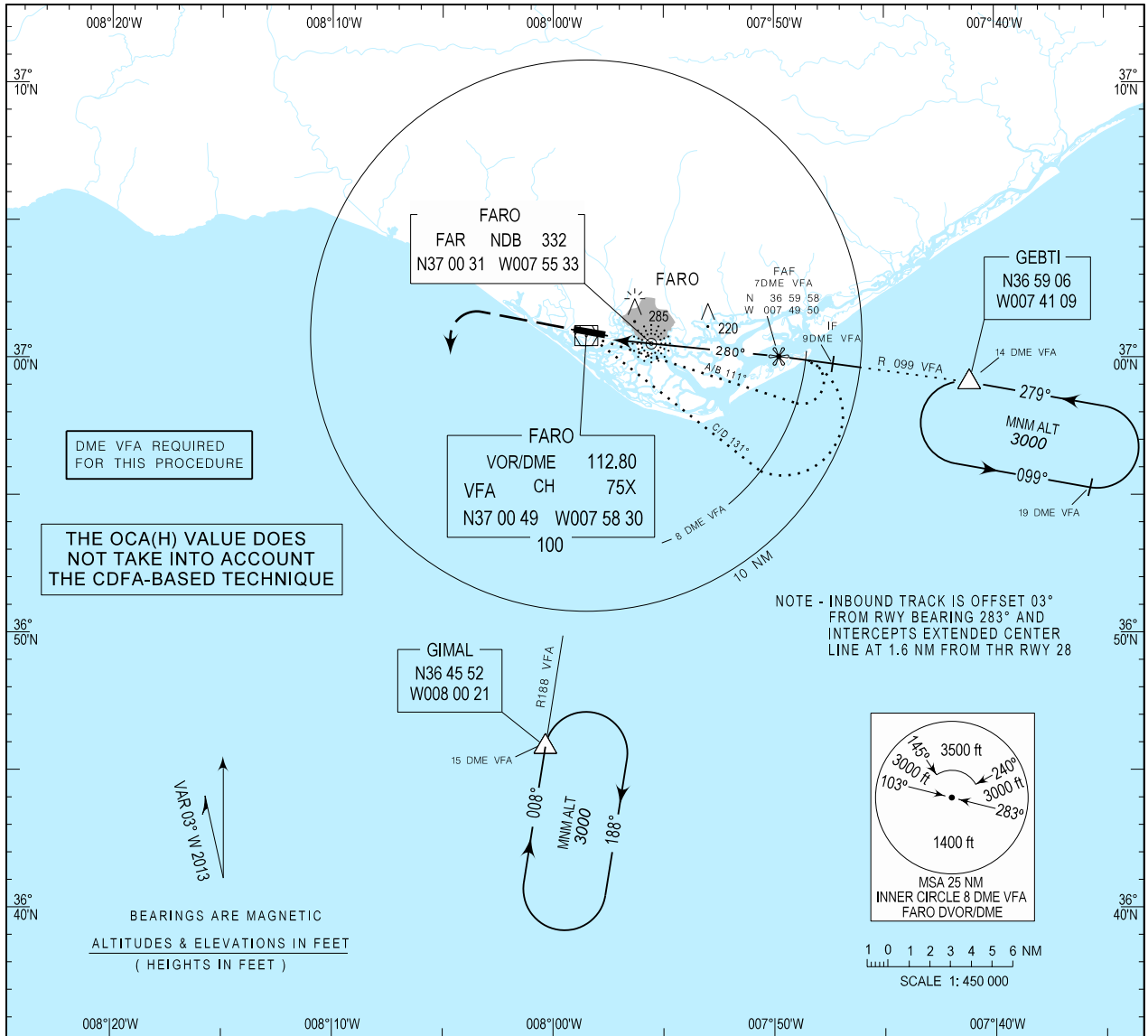


INSTRUMENT
APPROACH
CHART - ICAO

AD ELEV 24 ft
HEIGHTS RELATED
THR RWY 28 - ELEV 18 ft

APP 119.400
TWR 120.750

FARO / LPFR
DVOR-Z
RWY 28
CAT A-B-C-D



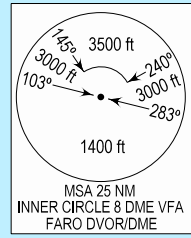
DME VFA REQUIRED FOR THIS PROCEDURE

THE OCA(H) VALUE DOES NOT TAKE INTO ACCOUNT THE CDFA-BASED TECHNIQUE

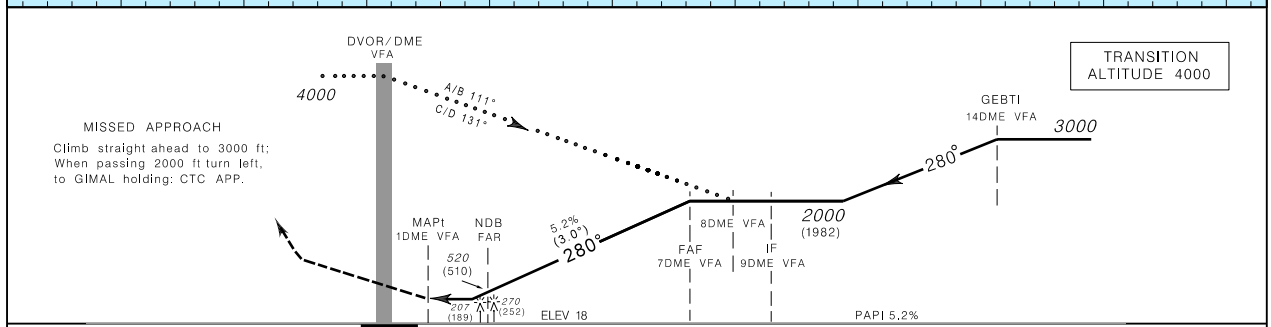
NOTE - INBOUND TRACK IS OFFSET 03° FROM RWY BEARING 283° AND INTERCEPTS EXTENDED CENTER LINE AT 1.6 NM FROM THR RWY 28



BEARINGS ARE MAGNETIC
ALTITUDES & ELEVATIONS IN FEET
(HEIGHTS IN FEET)



SCALE 1: 450 000



MISSED APPROACH
Climb straight ahead to 3000 ft;
When passing 2000 ft turn left,
to GIMAL holding: CTC APP.

TRANSITION ALTITUDE 4000



CATEGORY OCA (H)	CATEGORY			
	A	B	C	D
STRAIGHT-IN	460(450)	460(450)	460(450)	460(450)
CIRCLING	NOT AUTHORIZED			
	NORTH RWY10/28			
	460	520	620	720

	6	5	4	3
DME-VFA				
ALTITUDE (HEIGHT)	1685(1665)	1370(1350)	1055(1035)	740(720)
DIST THR	5.25	4.45	3.25	2.25

New MAG Variation (2013)