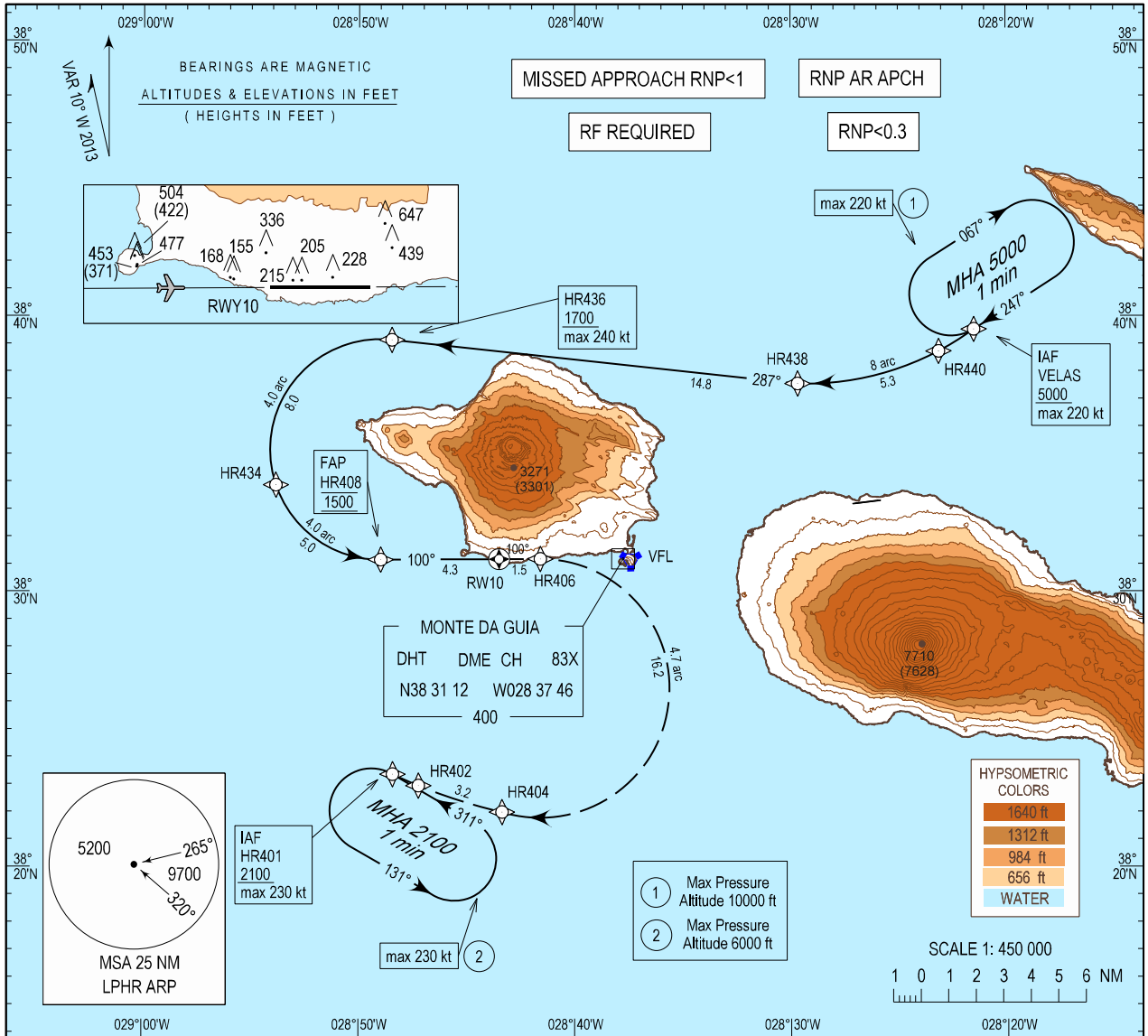


INSTRUMENT
APPROACH
CHART - ICAO

AD ELEV 118 ft
HEIGHTS RELATED
THR RWY 10 - ELEV 82 ft

ACC 132.150
APP 120.600
TWR 118.000

HORTA / LPHR
RNP Y RWY10 (AR)



MISSED APPROACH
Climb to 2100 ft via RNP AR missed approach track HR406-HR404-HR402 to HR401.
At HR401, hold or start a new approach via HR401 or follow ATC instructions.
Note: RNP 0.3 required from HR406 until HR401

RCF: Squawk 7600.
Proceed as above.
On HR401 make one complete holding pattern at 2100 ft and then proceed to perform RNP X RWY10 approach procedure.

BARO-VNAV MINIMUM TEMPERATURE : +5.0°C

TA: 5000

HR434 1500
FAP HR408 1500
RWY10
700 (618)
3.0°-5.2%
100° (089.7°)
RDH:50
4.3

	CAT A		CAT B		CAT C	
	DA(H)	OCH	DA(H)	OCH	DA(H)	OCH
③ RNP 0.3	640(558)	552	650(568)	564	660(578)	572
④ RNP 0.2	640(558)	552	650(568)	564	660(578)	572
⑤ RNP 0.1	590(508)	501	600(518)	513	610(528)	521

③ RNP 0.3 is required until HR406
④ RNP 0.2 is required until HR406
⑤ RNP 0.1 is required until HR406

New DME DHT. New text boxes. New chart IDENT.

Instrument Approach Procedure Coding Table

Horta RNP Y RWY 10 (AR)

Path Terminator	Waypoint				Course/Track MAG (True)	Dist NM	Turn Direction	ARC Centre Waypoint		ARC Radius NM
	Identifier	Type	Flyover	Coordinates				Identifier	Coordinates	
IF	VELAS	IAF	-	383931.89N 0282130.62W	-	-	-	-	-	-
TF	HR440	-	-	383844.25N 0282308.42W	248 (238.0)	1.5	-	-	-	-
RF	HR438	-	-	383733.90N 0282940.54W	-	5.3	R	HRC01	384531.51N 0282833.76W	8.000
TF	HR436	-	-	383909.20N 0284828.29W	287 (276.2)	14.8	-	-	-	-
RF	HR434	IF	-	383353.05N 0285350.35W	-	8.0	L	HRC02	383510.30N 0284900.56W	4.000
RF	HR408	FAP	-	383110.06N 0284858.69W	-	5.0	L	HRC02	383510.30N 0284900.56W	4.000
TF	RW10	MAPT	Y	383111.51N 0284330.27W	100 (089.7)	4.3	-	-	-	-
TF	HR406	-	-	383111.96N 0284135.61W	100 (089.7)	1.5	-	-	-	-
RF	HR404	-	-	382200.43N 0284321.71W	-	16.2	R	HRC06	382629.67N 0284133.89W	4.7
TF	HR402	-	-	382257.85N 0284713.60W	298 (287.5)	3.2				
RF	HR401	-	-	382322.72N 0284825.50W	-	1.0	R	HRC17	382727.15N 0284526.00W	4.7
HM	HR401	-	-	382322.72N 0284825.50W	-	-	L	-	-	-

Waypoint Identifier	Altitude	Speed	RNP Value NM	Navigation Specification	Remarks
VELAS	+5000	220 KT	0.3	RNP AR APCH	-
HR440	+1700	-	0.3	RNP AR APCH	-
HR438	+1700	-	0.3	RNP AR APCH	-
HR436	+1700	240 KT	0.3	RNP AR APCH	-
HR434	+1500	-	0.3	RNP AR APCH	-
HR408	@1500	-	0.3/0.2/0.1	RNP AR APCH	-
RW10	-	-	0.3/0.2/0.1	RNP AR APCH	-
HR406	-	-	0.3/0.2/0.1	RNP AR APCH	-
HR404	-	-	0.3	RNP AR APCH	-
HR402	-	-	0.3	RNP AR APCH	-
HR401	+2100	230 KT	0.3	RNP AR APCH	-
HR401	+2100	230 KT	0.3	RNP AR APCH	-

Horta RNAV Holdings

HLDG ID	INBD TRACK		Turn direction	max IAS (kt)	MNM HLDG ALT FL/ft (MSL)	TIME (MIN) or DIST OUBD	Controlling Unit
	MAG	(TRUE)					
HR401	311 (300.1)		L	230	2100 ft	1 min	Horta TWR
VELAS	247 (236.1)		R	220	5000 ft	1 min	Horta TWR