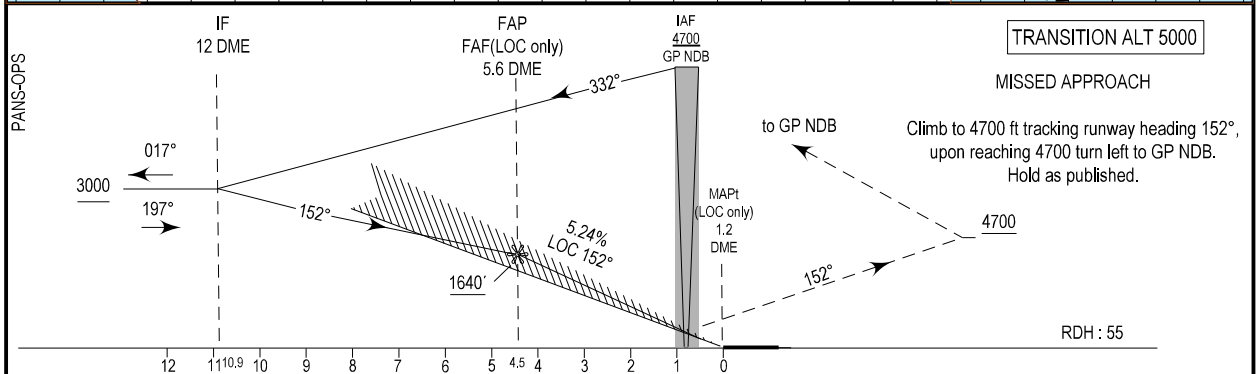
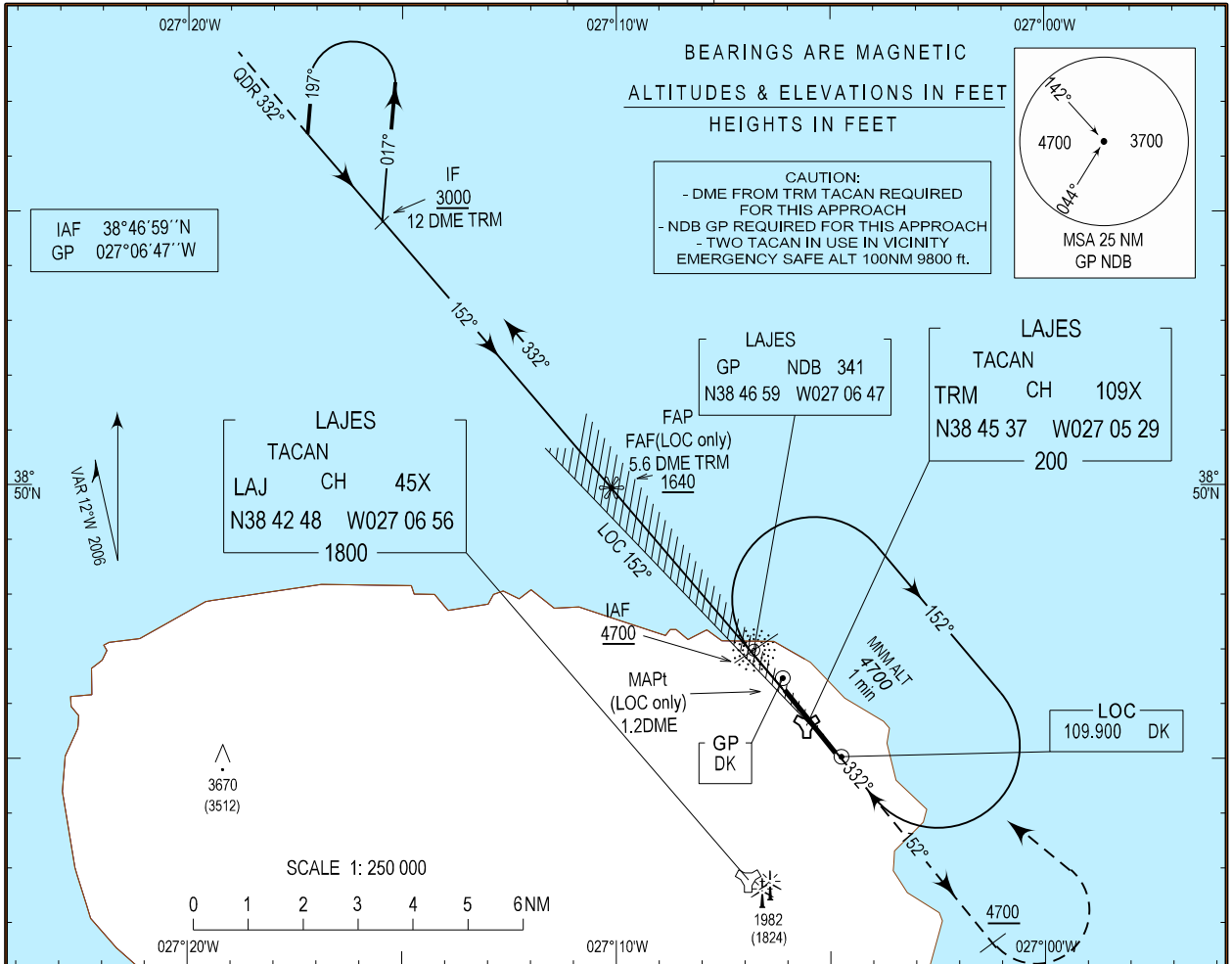


**INSTRUMENT
APPROACH
CHART - ICAO**

AD ELEV 180ft
HEIGHTS RELATED
THR RWY 15 -ELEV 158ft

ATIS 120.300
APP 135.000
TWR 122.100
SMC 121.900

LAJES (LPLA)
ILS Z
RWY15



CATEGORY	A	B	C	D
ILS RWY15 *	408 250 (300 - 1.2)			
LOC RWY15 *	520 362 (400 - 1.2)			
CIRCLING **	800 620 (700 - 1.9)	800 620 (700 - 2.8)	900 720 (700 - 3.7)	900 720 (700 - 4.6)

* When SALS INOP increase vis Cat A/B/C/D 400m
** CIRCLING NOT AUTHORIZED WEST OR RWY 15/33

Ground Speed -Kt	90	100	120	130	140	150
(LOC only)						
FAF-MAPt (4.5NM) (min:sec)	2:59	2:41	2:14	2:04	1:55	1:48
Rate of Descent (ft/min) FAF - THR15	478	531	638	691	744	797

Circling corrected on table.