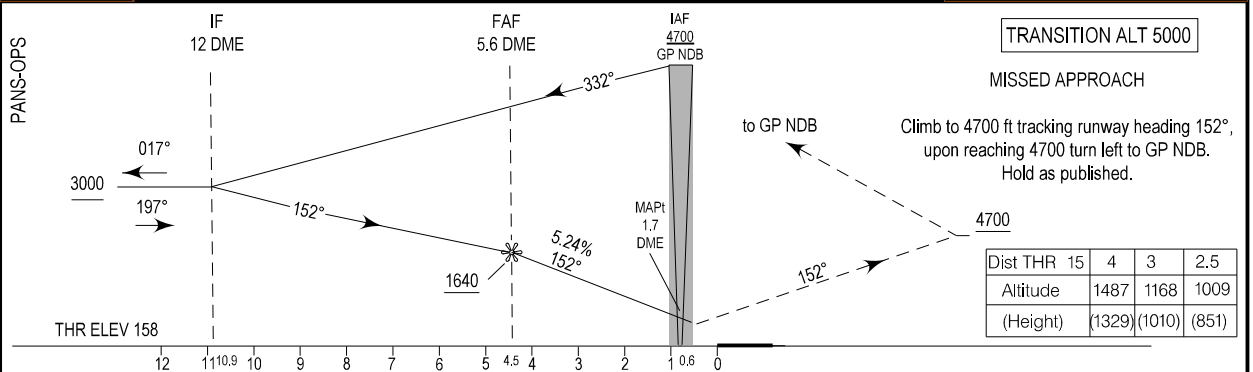
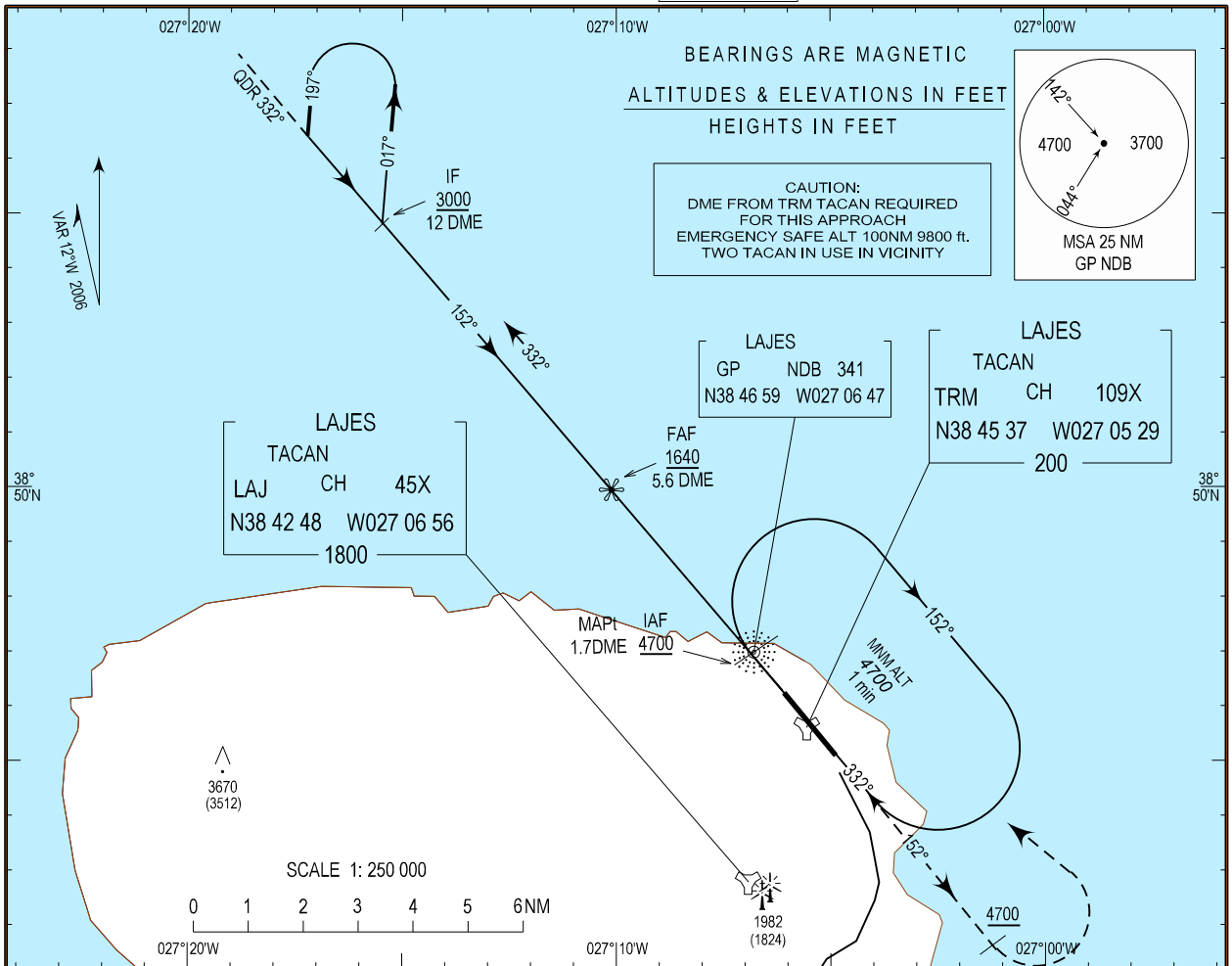


**INSTRUMENT
APPROACH
CHART - ICAO**

AD ELEV 180ft
HEIGHTS RELATED
THR RWY 15 -ELEV 158ft

ATIS 120.300
APP 135.000
TWR 122.100
SMC 121.900

LAJES (LPLA)
NDB
RWY15



CATEGORY	A	B	C	D
NDB RWY15 *	870 712 (800 - 1.2)	870 712 (800 - 2.8)	870 712 (800 - 3.2)	870 712 (800 - 3.2)
CIRCLING **	900 720 (800 - 1.9)	900 720 (800 - 2.8)	900 720 (800 - 3.7)	900 720 (800 - 4.6)

Ground Speed -Kt	90	100	120	130	140	150
FAF-MAPt (3.9NM) (min:sec)	2:37	2:21	1:58	1:49	1:41	1:34
Rate of Descent (ft/min) FAF - THR15	478	531	638	691	744	797

* When SALS INOP increase vis Cat A/B/C/D 400m
** CIRCLING NOT AUTHORIZED WEST OF RWY 15/33

Editorial correction