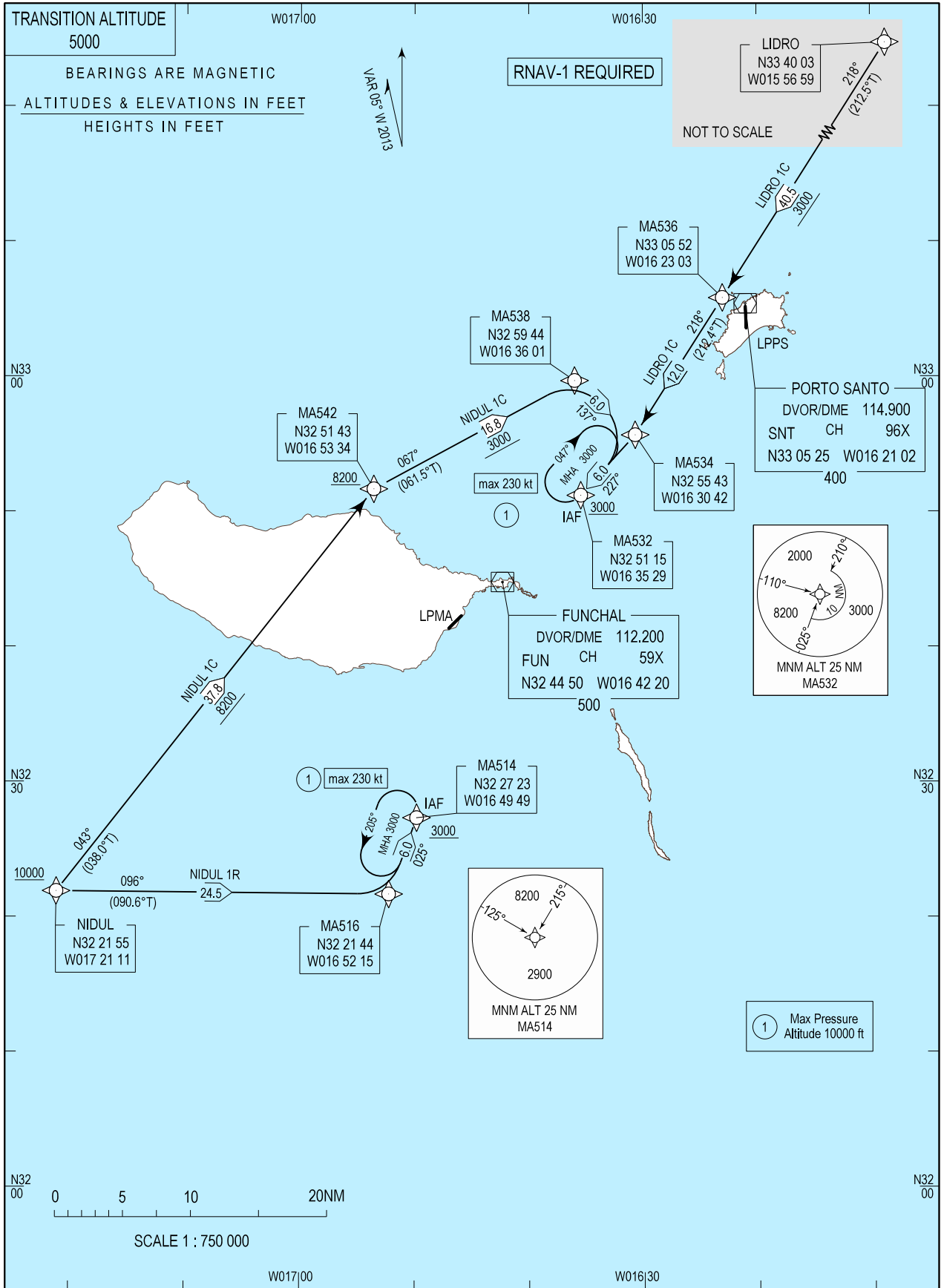


STANDARD ARRIVAL CHART - INSTRUMENT (STAR) - ICAO

MADEIRA INFORMATION 130.355
LISBOA CONTROL 132.255
MADEIRA APPROACH 119.605
MADEIRA TOWER 118.355

MADEIRA / LPMA
RNAV (GNSS) RWY 05/23
NIDUL 1R, NIDUL 1C
LIDRO 1C



New CS and FREQ. Chart redrawn.

STAR Procedure Coding Table
Madeira STAR RNAV 1 NIDUL 1R

Path Terminator	Waypoint			Course/Track MAG (True)	Dist NM	Turn Direction	Constraints		Navigation Specificatin
	Identifier	Flyover	Coordinates				Level	Speed	
IF	NIDUL	-	322154.8240N 0172110.5166W	-	-	-	+10000ft	-	RNAV 1
TF	MA516	-	322143.9250N 0165214.7610W	095.810 (090.560)	24.511	-	-	-	RNAV 1
TF	MA514	-	322722.9270N 0164949.3940W	025.250 (020.000)	6.000	-	+3000ft	-	RNAV 1

Madeira STAR RNAV 1 NIDUL 1C

Path Terminator	Waypoint			Course/Track MAG (True)	Dist NM	Turn Direction	Constraints		Navigation Specificatin
	Identifier	Flyover	Coordinates				Level	Speed	
IF	NIDUL	-	322154.8240N 0172110.5166W	-	-	-	+10000ft	-	RNAV 1
TF	MA542	-	325143.4640N 0165334.3520W	043.222 (037.972)	37.800	-	+8200ft	-	RNAV 1
TF	MA538	-	325944.0670N 0163600.5350W	066.767 (061.517)	16.806	-	-	-	RNAV 1
TF	MA534	-	325542.8230N 0163042.4430W	137.202 (131.952)	6.000	-	-	-	RNAV 1
TF	MA532	-	325114.8570N 0163528.6380W	227.293 (222.043)	6.000	-	+3000ft	-	RNAV 1

Madeira STAR RNAV 1 LIDRO 1C

Path Terminator	Waypoint			Course/Track MAG (True)	Dist NM	Turn Direction	Constraints		Navigation Specificatin
	Identifier	Flyover	Coordinates				Level	Speed	
IF	LIDRO	-	334002.6420N 0155658.5485W	-	-	-	+4000ft	-	RNAV 1
TF	MA536	-	330551.5850N 0162303.0220W	217.734 (212.484)	40.510	-	-	-	RNAV 1
TF	MA534	-	325542.8230N 0163042.4430W	217.665 (212.415)	12.000	-	-	-	RNAV 1
TF	MA532	-	325114.8570N 0163528.6380W	227.250 (222.000)	6.000	-	+3000ft	-	RNAV 1

RNAV Holding

HLDG ID	INBD TRACK MAG (TRUE)	Turn Direction	MAX IAS (KT)	MAX/MNM HLDG ALT FL/FT(MSL)	TIME (MIN) or DIST OUBD	Controlling Unit
MA532	227.250 (222.000)	R	230	10000/3000	1 MIN	Madeira TWR
MA514	025.250 (020.000)	L	230	10000/3000	1 MIN	Madeira TWR