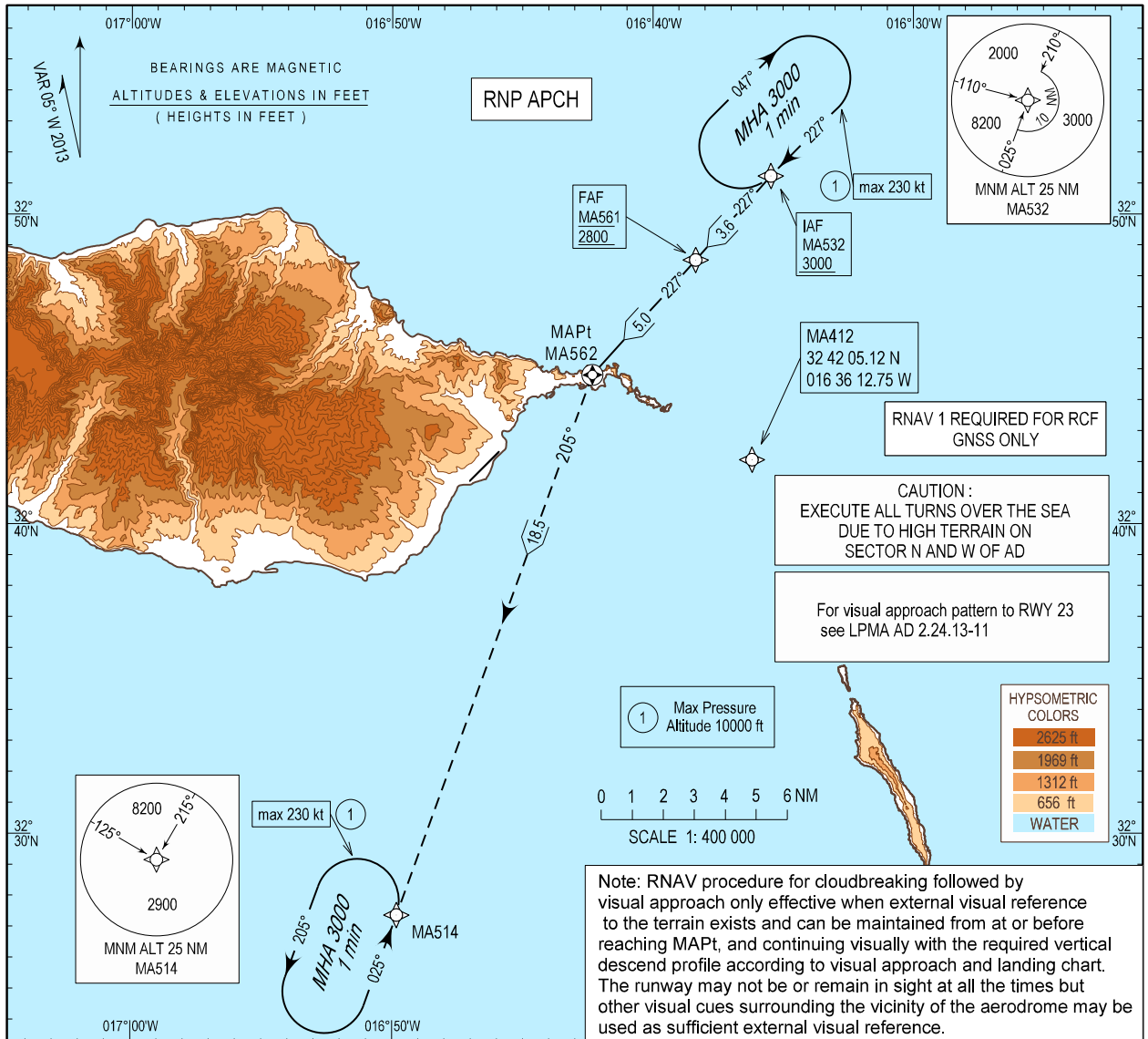


INSTRUMENT APPROACH CHART - ICAO
AD ELEV 191 ft
HEIGHTS RELATED THR RWY 23 - ELEV 191 ft

MADEIRA INFORMATION 130.355
MADEIRA APPROACH 119.605
MADEIRA TOWER 118.355

MADEIRA / LPMA
RNP RWY23-b



Note: RNAV procedure for cloudbreaking followed by visual approach only effective when external visual reference to the terrain exists and can be maintained from at or before reaching MAPt, and continuing visually with the required vertical descend profile according to visual approach and landing chart. The runway may not be or remain in sight at all the times but other visual cues surrounding the vicinity of the aerodrome may be used as sufficient external visual reference.

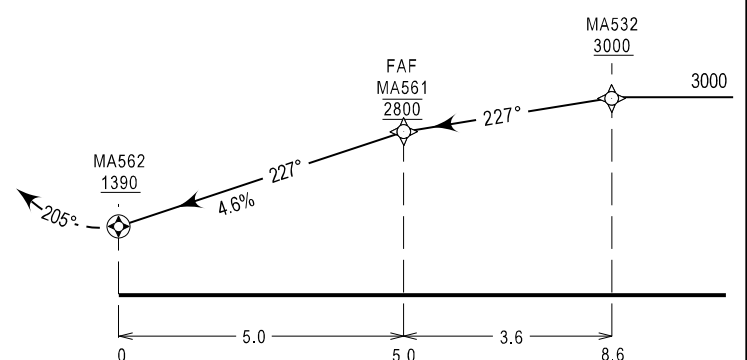
MISSED APPROACH
Turn left to MA514 climbing to 3000 ft.
At MA514 hold or follow ATC instructions.

RCF: Squawk 7600. Proceed as above.
On MA514 holding proceed to MA412 then to MA532 holding, make one complete holding pattern at 3000 ft to perform another RNAV (GNSs) RWY23 approach.

TA: 5000

CATEGORY	MINIMA		
	A - B - C - D		
	MDA (H)	VIS	CEILING
CIRCLING	1390 (1199)	7000 m	1200 / 370 m

		5	4	3	2	1		
MA561 - MA562 (NM)								
ALTITUDE (HEIGHT)		2800 (2609)	2521 (2330)	2242 (2051)	1900 (1754)	1600 (1454)		
Speed	kt	80	100	120	140	160	180	200
Rate of descent (5.0%)	ft / min	400	500	600	700	800	900	1000



WIND LIMITATION ON LANDING RWY23

Sector 300° to 010° - 15 kt wind / 25 kt gust - touchdown anemometer 2 min mean value

Sector 120° to 190° - 15 kt wind touchdown anemometer 2 min mean value 25 kt gust - MID anemometer

Sector 200° to 230° - 25 kt 2 min wind or gust on MID or Rosario anemometer

New chart identification, new text box.

LPMA RNP RWY 23 – b

Path Terminator	Waypoint				Course/Track MAG (True)	Dist NM	Turn Direction	Altitude	Speed	RNP Value NM	Navigation Specification	Remarks
	Identifier	Type	Flyover	Coordinates								
IF	MA532	IAF	-	325114.86N 0163528.64W	-	-	-	+3000FT	230KT	1.0	RNP APCH	-
TF	MA561	FAF	-	324832.27N 0163821.97W	227 (222.0)	3.64	-	@2800FT	-	0.3	RNP APCH	-
TF	MA562	MAPT	Y	324449.81N 0164219.63W	227 (222.1)	4.98	-	-	-	1.0	RNP APCH	-
TF	MA514	-	-	322722.93N 0164949.39W	205 (200.0)	18.53	L	+3000FT	230KT	1.0	RNP APCH	-
HM	MA514	-	-	322722.93N 0164949.39W	-	-	L	+3000FT	230KT	1.0	RNP APCH	-

RNAV HOLDING

HLDG ID	Inbound Track MAG (true)	Turn Direction	MAX IAS (KT)	MAX/MNM HLDG ALT FL/FT (MSL)	TIME (MIN) or DIST Outbound	Controlling Unit
MA532	227 (222.0)	R	230	FL100 / 3000FT	1 MIN	Madeira TWR
MA514	025 (020.0)	L	230	FL100 / 3000FT	1 MIN	Madeira TWR