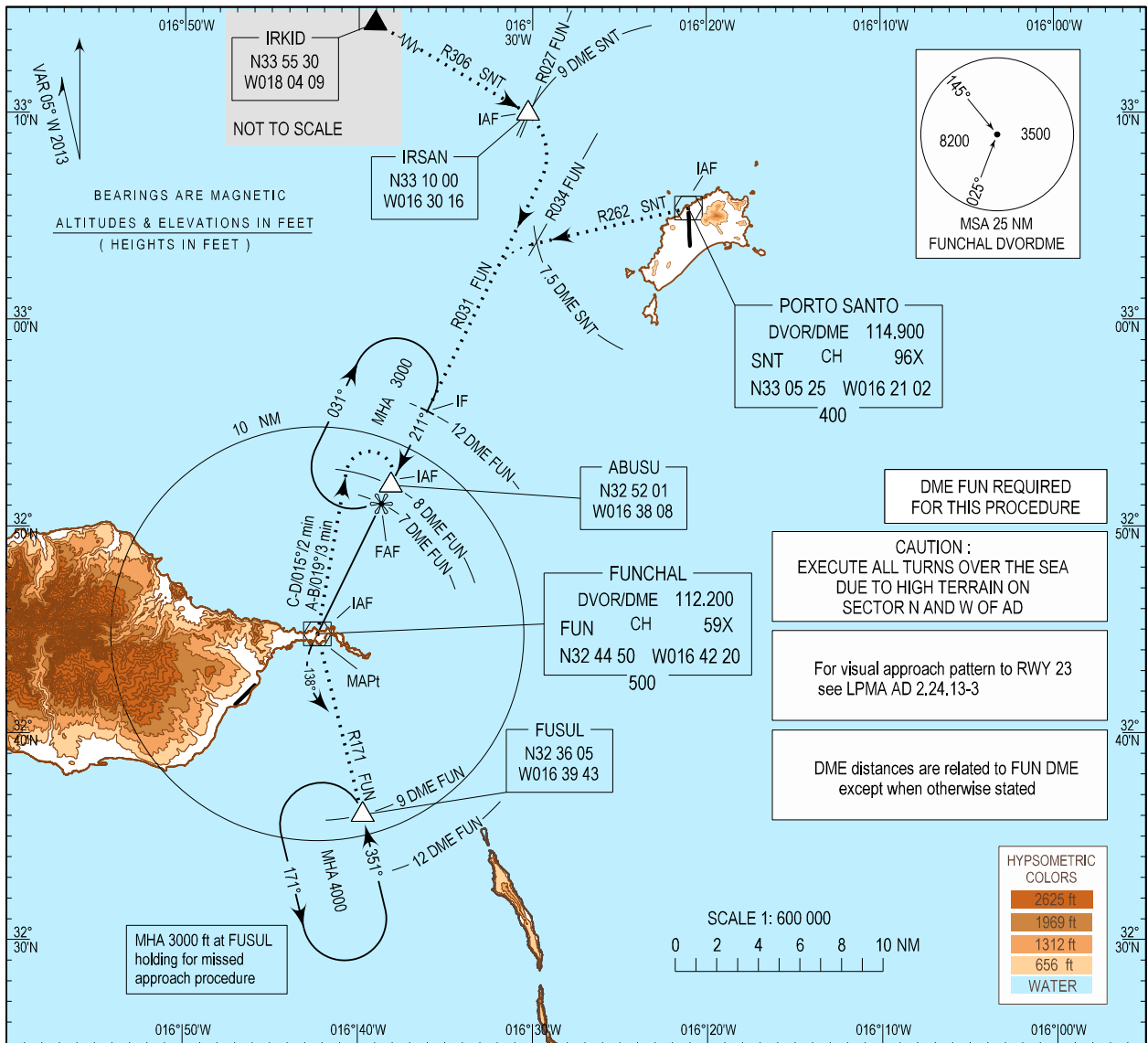


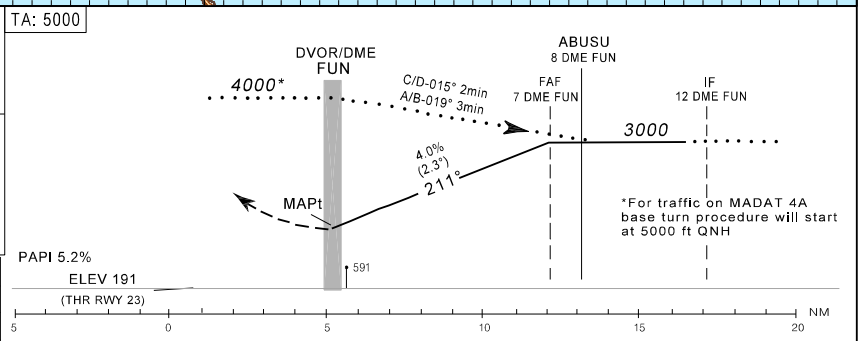
INSTRUMENT APPROACH CHART - ICAO  
AD ELEV 191 ft  
HEIGHTS RELATED  
THR RWY 23 - ELEV 191 ft

MADEIRA INFORMATION 130.355  
MADEIRA APPROACH 119.605  
MADEIRA TOWER 118.355

MADEIRA / LPMA  
DVOR/DME - CIRCLING  
RWY 23



**MISSED APPROACH**  
Turn left heading 138° to intercept R171 to holding FUSUL; climb to 3000 ft.  
CTC APP.



MINIMA			
CATEGORY	A - B - C - D		
	MDA (H)	VIS	CEILING
CIRCLING	1300 (1110)	7000 m	1200 / 370 m

DME - FUN	7	6	5	4	3	2	1
ALTITUDE	3000	2800	2550	2300	2050	1800	1550

Speed	kt	80	100	120	140	160	180
Rate of descent 4.0% (2.3°)	ft / min	325	405	490	570	650	730

**WIND LIMITATION ON LANDING RWY23**

Sector 300° to 010° - 15 kt wind / 25 kt gust - touchdown anemometer 2 min mean value

Sector 120° to 190° - 15 kt wind touchdown anemometer 2 min mean value 25 kt gust - MID anemometer

Sector 200° to 230° - 25 kt 2 min wind or gust on MID or Rosario anemometer

Profile view redrawn.