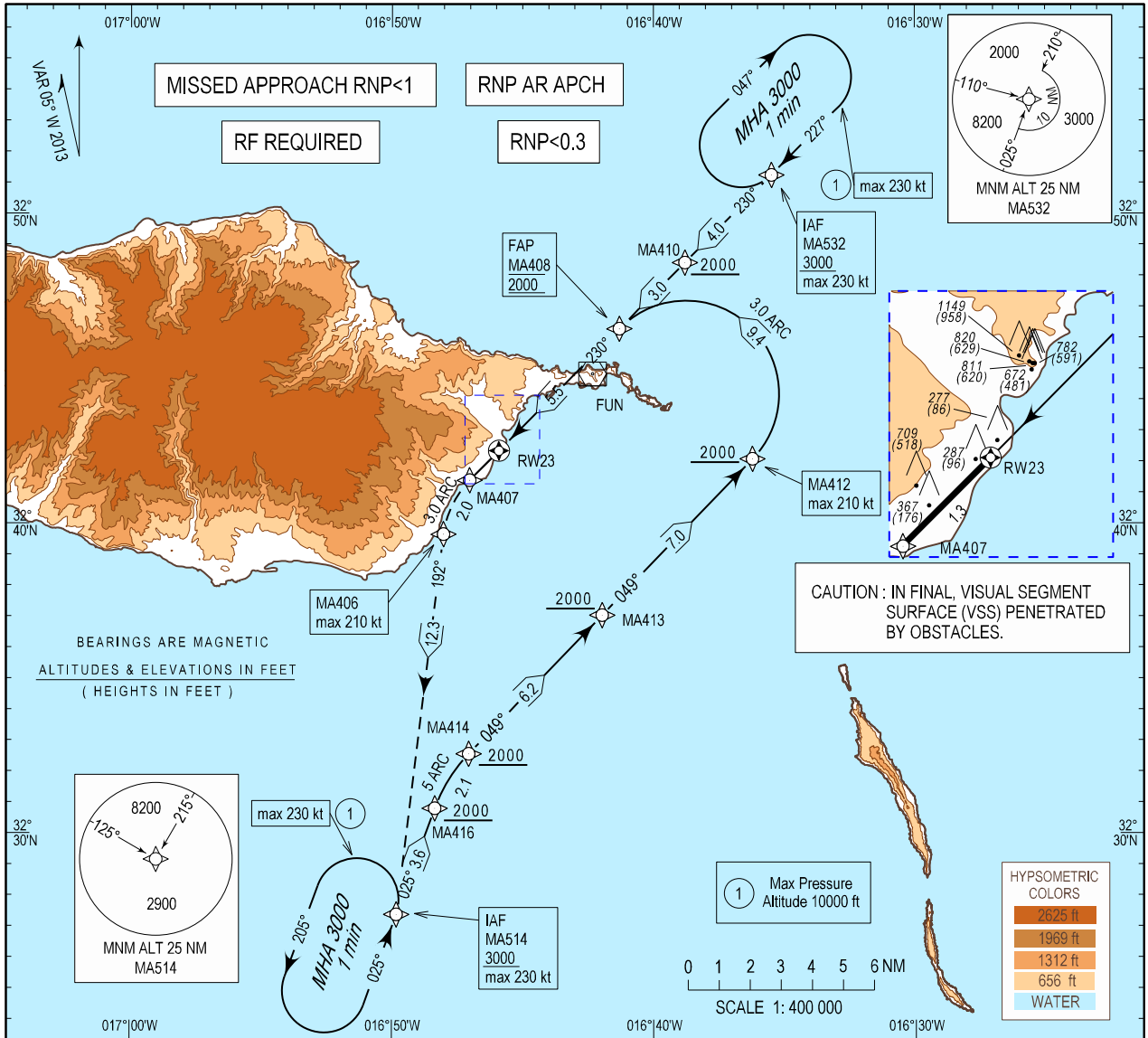


INSTRUMENT
APPROACH
CHART - ICAO

AD ELEV 191 ft
HEIGHTS RELATED
THR RWY 23 - ELEV 191 ft

MADEIRA INFORMATION 130.355
MADEIRA APPROACH 119.605
MADEIRA TOWER 118.355

MADEIRA / LPMA
RNP RWY 23 (AR)



<p>MISSED APPROACH</p> <p>Climb to 3000 ft via the RNP missed approach track MA407 - MA406 to MA514. At MA514 hold or follow ATC instructions.</p>		<p>TA: 5000</p>	<p>BARO-VNAV MINIMUM TEMPERATURE : +7.5°C</p>	<p>FAP MA408 2000</p>	<p>MA410 2000</p> <p>MA412 2000</p>																																												
<p>RCF: Squawk 7600. Proceed as above. On MA514 holding, make one complete holding pattern at 3000 ft and then proceed to perform RNP RWY23 Procedure.</p>																																																	
<p>② RNP 0.1/0.2 is required until MA406</p>		<p>RDH:50</p> <p>THR: 191</p>	<p>5.5</p>																																														
	<table border="1"> <thead> <tr> <th rowspan="2"></th> <th colspan="2">CAT A</th> <th colspan="2">CAT B</th> <th colspan="2">CAT C</th> <th colspan="2">CAT D</th> </tr> <tr> <th>DA(H)</th> <th>OCH</th> <th>DA(H)</th> <th>OCH</th> <th>DA(H)</th> <th>OCH</th> <th>DA(H)</th> <th>OCH</th> </tr> </thead> <tbody> <tr> <td>RNP 0.3</td> <td>1160 (969)</td> <td>965</td> <td>1180 (989)</td> <td>986</td> <td>1200(1009)</td> <td>1005</td> <td>1220(1029)</td> <td>1023</td> </tr> <tr> <td>② RNP 0.2</td> <td>920 (729)</td> <td>727</td> <td>940 (749)</td> <td>748</td> <td>960 (769)</td> <td>767</td> <td>980 (789)</td> <td>782</td> </tr> <tr> <td>② RNP 0.1</td> <td>490 (299)</td> <td>295</td> <td>490 (299)</td> <td>295</td> <td>490 (299)</td> <td>295</td> <td>490 (299)</td> <td>295</td> </tr> </tbody> </table>		CAT A		CAT B		CAT C		CAT D		DA(H)	OCH	DA(H)	OCH	DA(H)	OCH	DA(H)	OCH	RNP 0.3	1160 (969)	965	1180 (989)	986	1200(1009)	1005	1220(1029)	1023	② RNP 0.2	920 (729)	727	940 (749)	748	960 (769)	767	980 (789)	782	② RNP 0.1	490 (299)	295	490 (299)	295	490 (299)	295	490 (299)	295	<p>WIND LIMITATION ON LANDING RWY23</p> <p>Sector 300° to 010° - 15 kt wind / 25 kt gust - touchdown anemometer 2 min mean value</p> <p>Sector 120° to 190° - 15 kt wind touchdown anemometer 2 min mean value 25 kt gust - MID anemometer</p> <p>Sector 200° to 230° - 25 kt 2 min wind or gust on MID or Rosario anemometer</p>			
	CAT A		CAT B		CAT C		CAT D																																										
	DA(H)	OCH	DA(H)	OCH	DA(H)	OCH	DA(H)	OCH																																									
RNP 0.3	1160 (969)	965	1180 (989)	986	1200(1009)	1005	1220(1029)	1023																																									
② RNP 0.2	920 (729)	727	940 (749)	748	960 (769)	767	980 (789)	782																																									
② RNP 0.1	490 (299)	295	490 (299)	295	490 (299)	295	490 (299)	295																																									

New text boxes.

**Instrument Approach Procedure Coding
Table Madeira RNP RWY 23 (AR)**

Path Terminator	Waypoint				Course/Track MAG (True)	Dist NM	Turn Direction	ARC Centre Waypoint		ARC Radius NM
	Identifier	Type	Flyover	Coordinates				Identifier	Coordinates	
IF	MA532	IAF	-	325114.8570N 0163528.6380W	-	-	-	-	-	-
TF	MA410	IF	-	324825.4460N 0163847.6060W	230.023 (224.773)	3.969	-	-	-	-
TF	MA408	FAP	-	324617.2640N 0164118.0750W	230.018 (224.768)	3.003	-	-	-	-
IF	MA514	IAF	-	322722.9270N 0164949.3940W	-	-	-	-	-	-
TF	MA416	-	-	323048.4390N 0164821.1100W	025.250 (020.000)	3.638	-	-	-	-
RF	MA414	-	-	323233.9600N 0164703.4050W	-	2.084	R	MAC07	322905.4370N 0164247.8600W	5.000
TF	MA413	-	-	323702.6510N 0164157.7410W	049.153 (043.903)	6.205	-	-	-	-
TF	MA412	IF	-	324205.1230N 0163612.7530W	049.198 (043.948)	6.991	-	-	-	-
RF	MA408	FAP	-	324617.2640N 0164118.0750W	-	9.385	L	MAC08	324410.3410N 0163846.3850W	3.000
TF	RW23	MAPT	Y	324221.0289N 0164554.5412W	229.956 (224.706)	5.527	-	-	-	-
TF	MA407	-	-	324123.7530N 0164701.5045W	229.929 (224.679)	1.340	-	-	-	-
RF	MA406	-	-	323939.2330N 0164801.4550W	-	1.967	L	MAC05	323916.9370N 0164429.8820W	3.000
TF	MA514	-	-	322722.9270N 0164949.3940W	192.335 (187.085)	12.341	-	-	-	-
HM	MA514	-	-	322722.9270N 0164949.3940W	-	-	L	-	-	-

Waypoint Identifier	Altitude	Speed	RNP Value NM	Navigation Specification	Remarks
MA532	+3000	230KT	0.3	RNP PARAPCH	-
MA410	+2000	-	0.3	RNP PARAPCH	-
MA408	@2000	-	0.3/0.2/0.1	RNP PARAPCH	-
MA514	+3000	230KT	0.3	RNP PARAPCH	-
MA416	+2000	-	0.3	RNP PARAPCH	-
MA414	+2000	-	0.3	RNP PARAPCH	-
MA413	+2000	-	0.3	RNP PARAPCH	-
MA412	+2000	210KT	0.3	RNP PARAPCH	-
MA408	@2000	-	0.3/0.2/0.1	RNP PARAPCH	-
RW23	-	-	0.3/0.2/0.1	RNP PARAPCH	-
MA407	-	-	0.3/0.2/0.1	RNP PARAPCH	-
MA406	-	210KT	0.3/0.2/0.1	RNP PARAPCH	-
MA514	+3000	-	0.3	RNP PARAPCH	-
MA514	+3000	-	0.3	RNP PARAPCH	-

RNAV Holding

HLDG ID	INBD TRACK MAG (TRUE)	Turn Direction	MAX IAS (KT)	MAX/MNM HLDG ALT FL/FT(MSL)	TIME (MIN) or DIST OUBD	Controlling Unit
MA532	227.250 (222.000)	R	230	FL100 / 3000FT	1 MIN	Madeira TWR
MA514	025.250 (020.000)	L	230	FL100 / 3000FT	1 MIN	Madeira TWR