

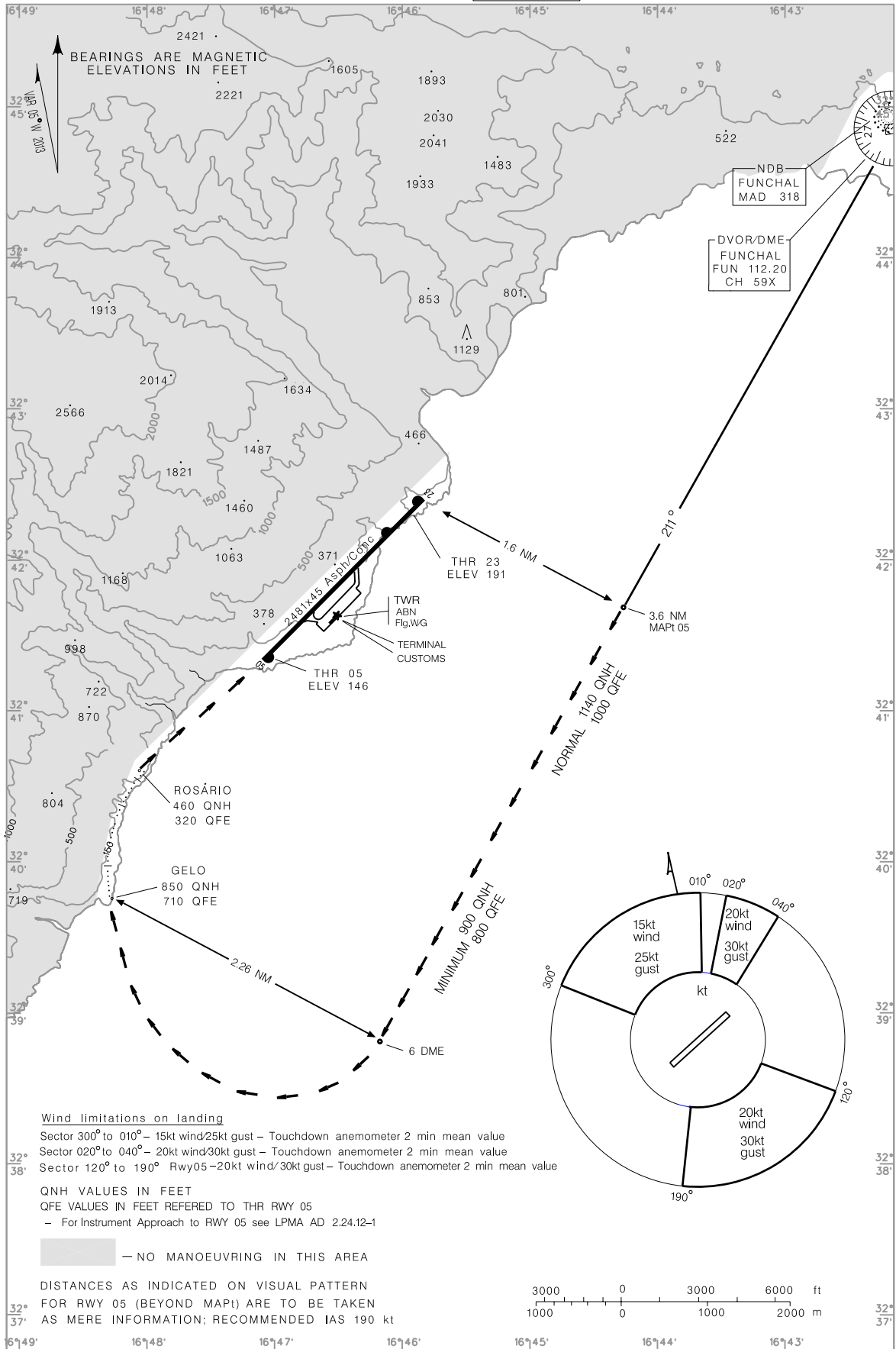
VISUAL APPROACH  
AND LANDING CHART

AD ELEV 191ft

ATIS 124.400  
APP 119.600  
TWR 118.350

DVOR RWY 05

MADEIRA  
LPMA



Wind limitations on landing

Sector 300° to 010° - 15kt wind/25kt gust - Touchdown anemometer 2 min mean value  
Sector 020° to 040° - 20kt wind/30kt gust - Touchdown anemometer 2 min mean value  
Sector 120° to 190° Rwy05 - 20kt wind/30kt gust - Touchdown anemometer 2 min mean value

QNH VALUES IN FEET

QFE VALUES IN FEET REFERED TO THR RWY 05  
- For Instrument Approach to RWY 05 see LPMA AD 2.24.12-1

— NO MANOEUVRING IN THIS AREA

DISTANCES AS INDICATED ON VISUAL PATTERN  
FOR RWY 05 (BEYOND MAPt) ARE TO BE TAKEN  
AS MERE INFORMATION; RECOMMENDED IAS 190 kt

New MAG Variation (2013)