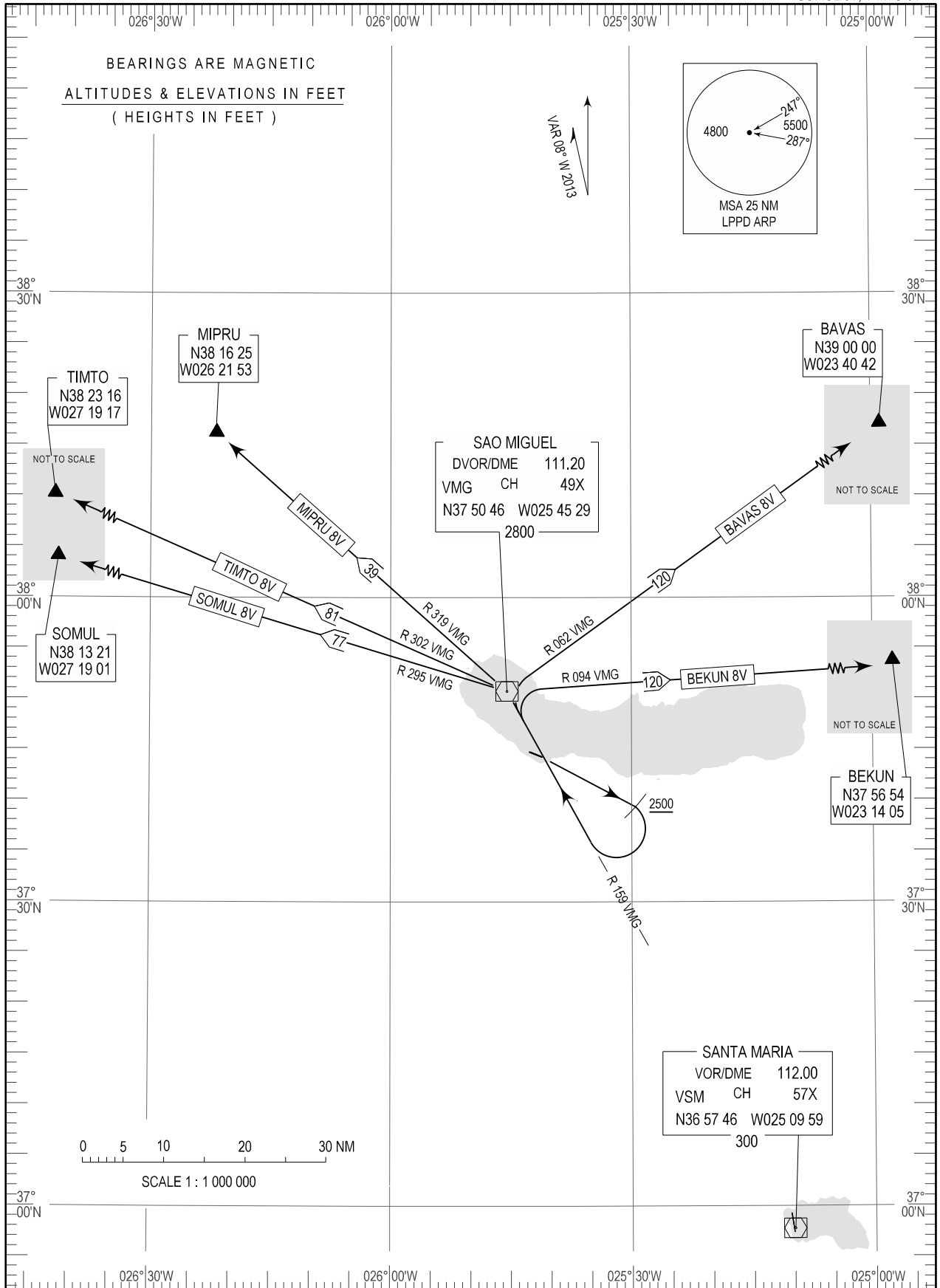


STANDARD DEPARTURE CHART -
INSTRUMENT (SID) - ICAO

TRANSITION ALTITUDE	APP	119.400
6000	TWR	118.300

PONTA DELGADA (LPPD)
RWY 12
BAVAS 8V, BEKUN 8V, MIPRU 8V
SOMUL 8V, TIMTO 8V



MSA changed. SID changed: BAVAS8V BEKUN8V MIPRU8V SOMUL8V TIMTO8V.

Ponta Delgada STANDARD INSTRUMENT DEPARTURE (SID) RUNWAY 12		
Designator	Route	Remarks
BAVAS8V	Climb straight ahead to 2500ft, upon reaching turn right to VMG DVOR/DME on RDL159 VMG DVOR/DME; at VMG DVOR/DME turn right to proceed on RDL062 to BAVAS.	Note: Cross RDL159 DME8 VMG DVOR/DME at or above 4800ft climbing.
BEKUN8V	Climb straight ahead to 2500ft, upon reaching turn right to VMG DVOR/DME on RDL159 VMG DVOR/DME; at VMG DVOR/DME turn right to proceed on RDL094 to BEKUN.	Note: Cross RDL159 DME8 VMG DVOR/DME at or above 4800ft climbing.
MIPRU8V	Climb straight ahead to 2500ft, upon reaching turn right to VMG DVOR/DME on RDL159 VMG DVOR/DME; at VMG DVOR/DME turn left to proceed on RDL319 to MIPRU.	Note: Cross RDL159 DME8 VMG DVOR/DME at or above 4800ft climbing.
SOMUL8V	Climb straight ahead to 2500ft, upon reaching turn right to VMG DVOR/DME on RDL159 VMG DVOR/DME; at VMG DVOR/DME turn left to proceed on RDL295 to SOMUL.	Note: Cross RDL159 DME8 VMG DVOR/DME at or above 4800ft climbing.
TIMTO8V	Climb straight ahead to 2500ft, upon reaching turn right to VMG DVOR/DME on RDL159 VMG DVOR/DME; at VMG DVOR/DME turn left to proceed on RDL302 to TIMTO.	Note: Cross RDL159 DME8 VMG DVOR/DME at or above 4800ft climbing.