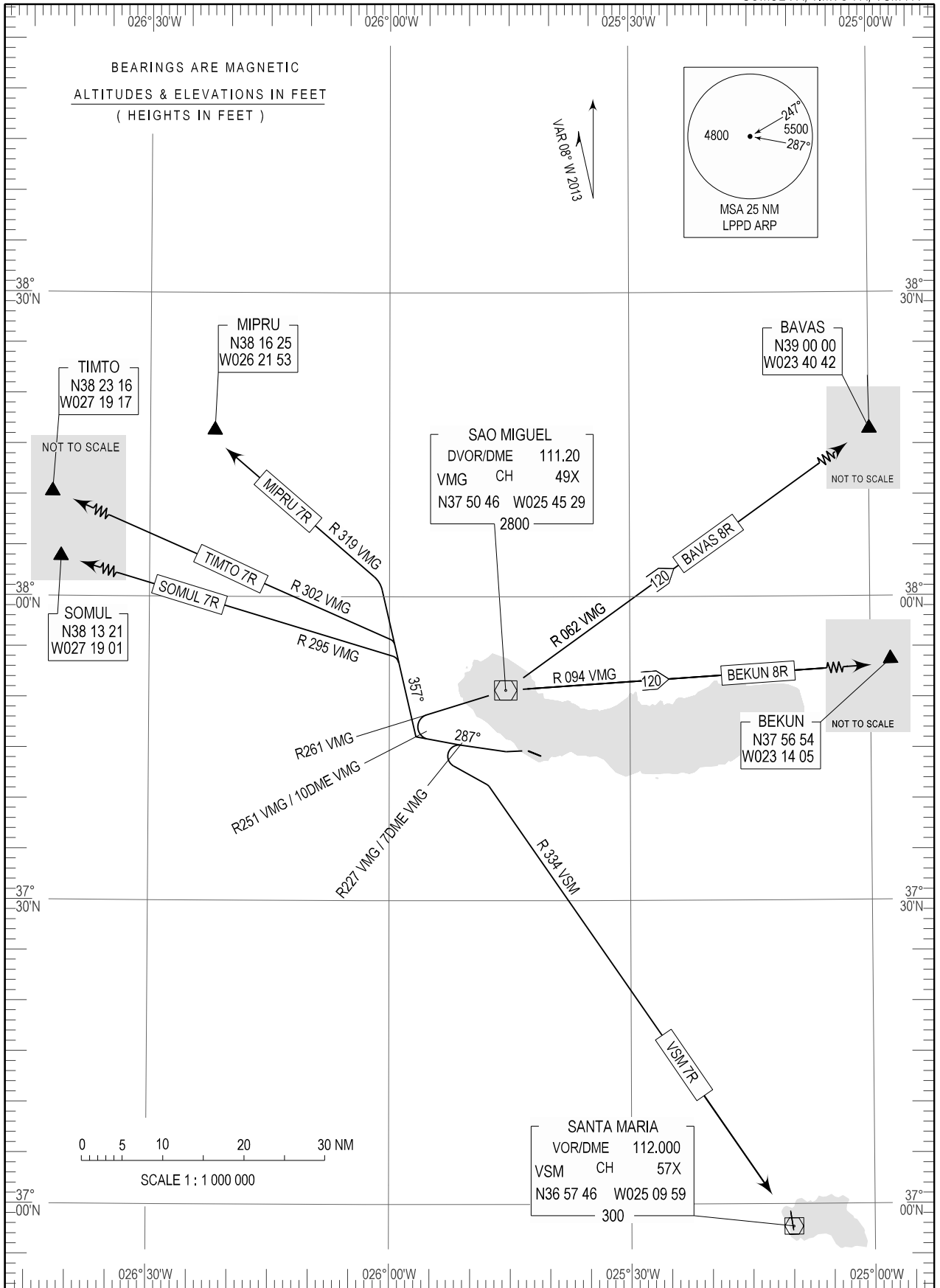


STANDARD DEPARTURE CHART - INSTRUMENT (SID) - ICAO

TRANSITION ALTITUDE	APP	119.400
6000	TWR	118.300

PONTA DELGADA (LPPD)
RWY 30
BAVAS 8R, BEKUN 8R, MIPRU 7R
SOMUL 7R, TIMTO 7R, VSM 7R



MSA changed. SID changed: BAVAS8R BEKUN8R.

Ponta Delgada STANDARD INSTRUMENT DEPARTURE (SID) RUNWAY 30		
Designator	Route	Remarks
BAVAS8R	Continue your left turn on track 287. At 3000ft climbing turn right to VMG DVOR/DME on RDL261 VMG DVOR/DME. Proceed on RDL062 VMG DVOR/DME to BAVAS.	Note: Cross RDL261 DME5 VMG DVOR/DME at or above 4800ft.
BEKUN8R	Continue your left turn on track 287. At 3000ft climbing turn right to VMG DVOR/DME on RDL261 VMG DVOR/DME. Proceed on RDL094 VMG DVOR/DME to BEKUN.	Note: Cross RDL261 DME5 VMG DVOR/DME at or above 4800ft.
MIPRU7R	Continue your left turn on track 287 to intercept RDL251 DME10 VMG DVOR/DME then turn right to track 357 to intercept RDL319 VMG DVOR/DME to MIPRU.	Note: After turning right to track 357 keep beyond DME5 VMG DVOR/DME.
SOMUL7R	Continue your left turn on track 287 to intercept RDL251 DME10 VMG DVOR/DME then turn right to track 357 to intercept RDL295 VMG DVOR/DME to SOMUL.	Note: After turning right to track 357 keep beyond DME5 VMG DVOR/DME.
TIMTO7R	Continue your left turn on track 287 to intercept RDL251 DME10 VMG DVOR/DME then turn right to track 357 to intercept RDL302 VMG DVOR/DME to TIMTO.	Note: After turning right to track 357 keep beyond DME5 VMG DVOR/DME.
VSM7R	Continue your left turn on track 287 to intercept RDL227 DME7 VMG DVOR/DME. At 1500ft or above turn left to intercept RDL334 VSM DVOR/DME to VSM DVOR/DME.	