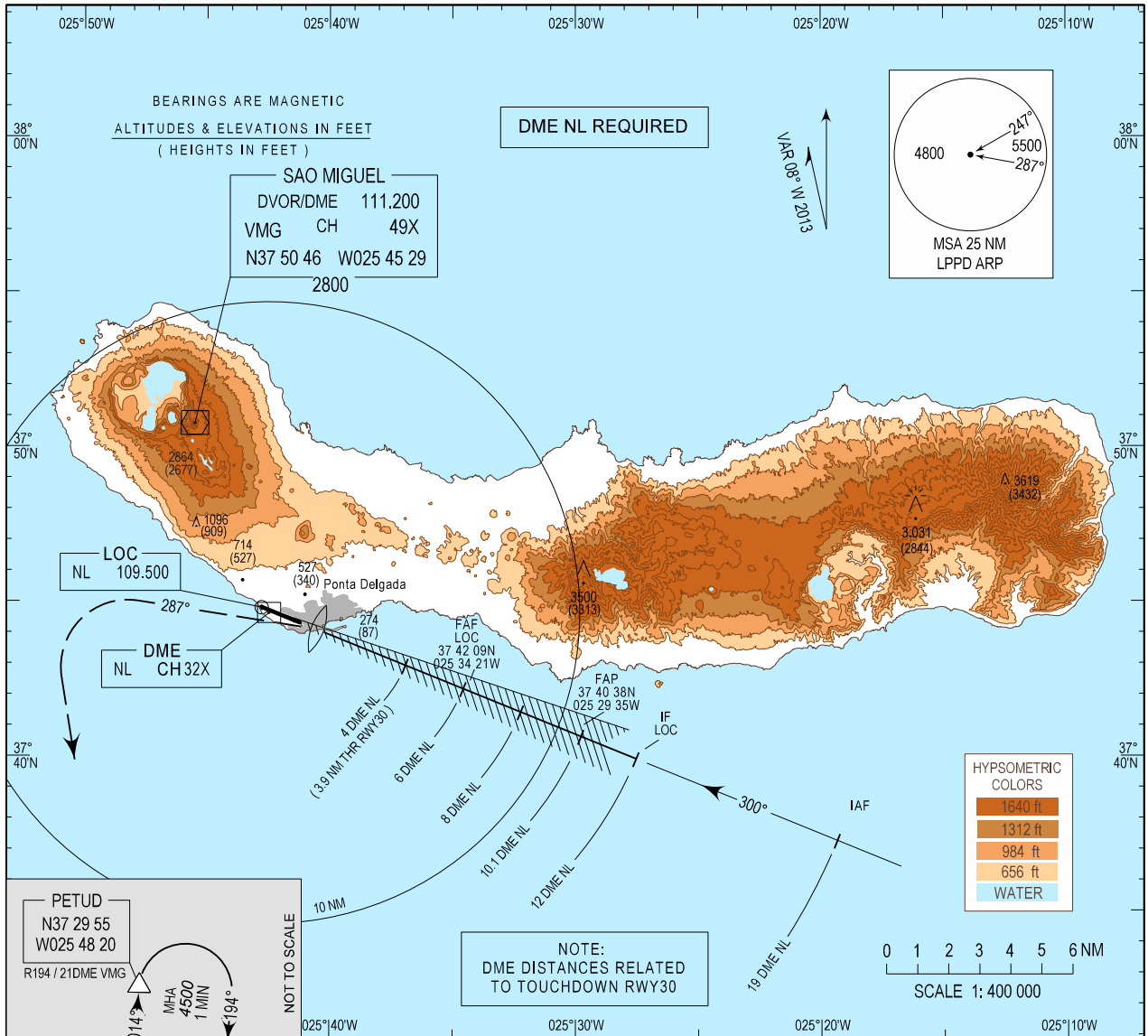


INSTRUMENT
APPROACH
CHART - ICAO

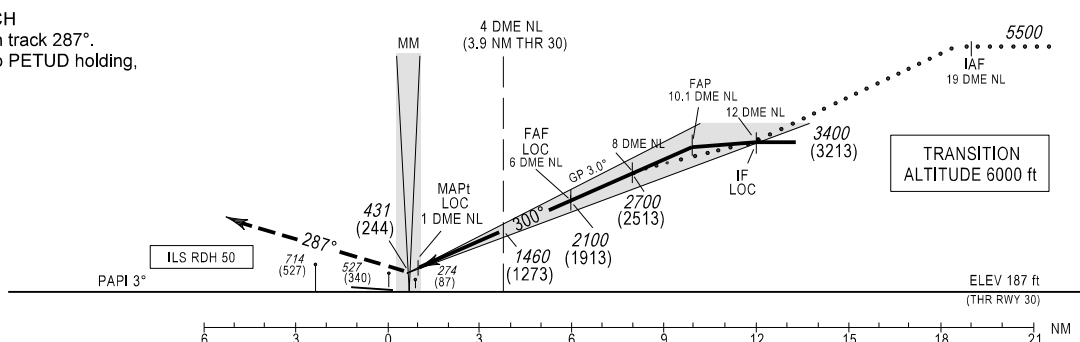
AD ELEV 259 ft
HEIGHTS RELATED
THR RWY 30 - ELEV 187 ft

ATIS 123.900
APP 119.400
TWR 118.300

PONTA DELGADA/LPPD
ILS-Z or LOC
RWY 30
CAT A-B



MISSED APPROACH
Turn left climbing on track 287°.
At 2000 ft turn left to PETUD holding,
climbing to 4500 ft.
CTC APP.



CAT	ILS CAT I		LOC		CIRCLING RWY30	
	DA/H	OCH	MDA/H	OCH	NORTH MDA/H	SOUTH MDA/H
A	410 (223)	221	530 (350)	350	NOT AUTHORIZED	660 (401)
B	420 (233)	231	530 (350)	350		760 (501)

LOC 5.2%							
DME-NL	8	7	6	5	4	3	2
Altitude (Height)	2700 (2513)	2400 (2213)	2100 (1913)	1780 (1593)	1460 (1273)	1145 (958)	825 (638)

Rate of descend (5.2%)	kt	80	100	120	140	160	180	200
		ft/mIn	420	525	630	735	840	945

Vertical profile MAPt.