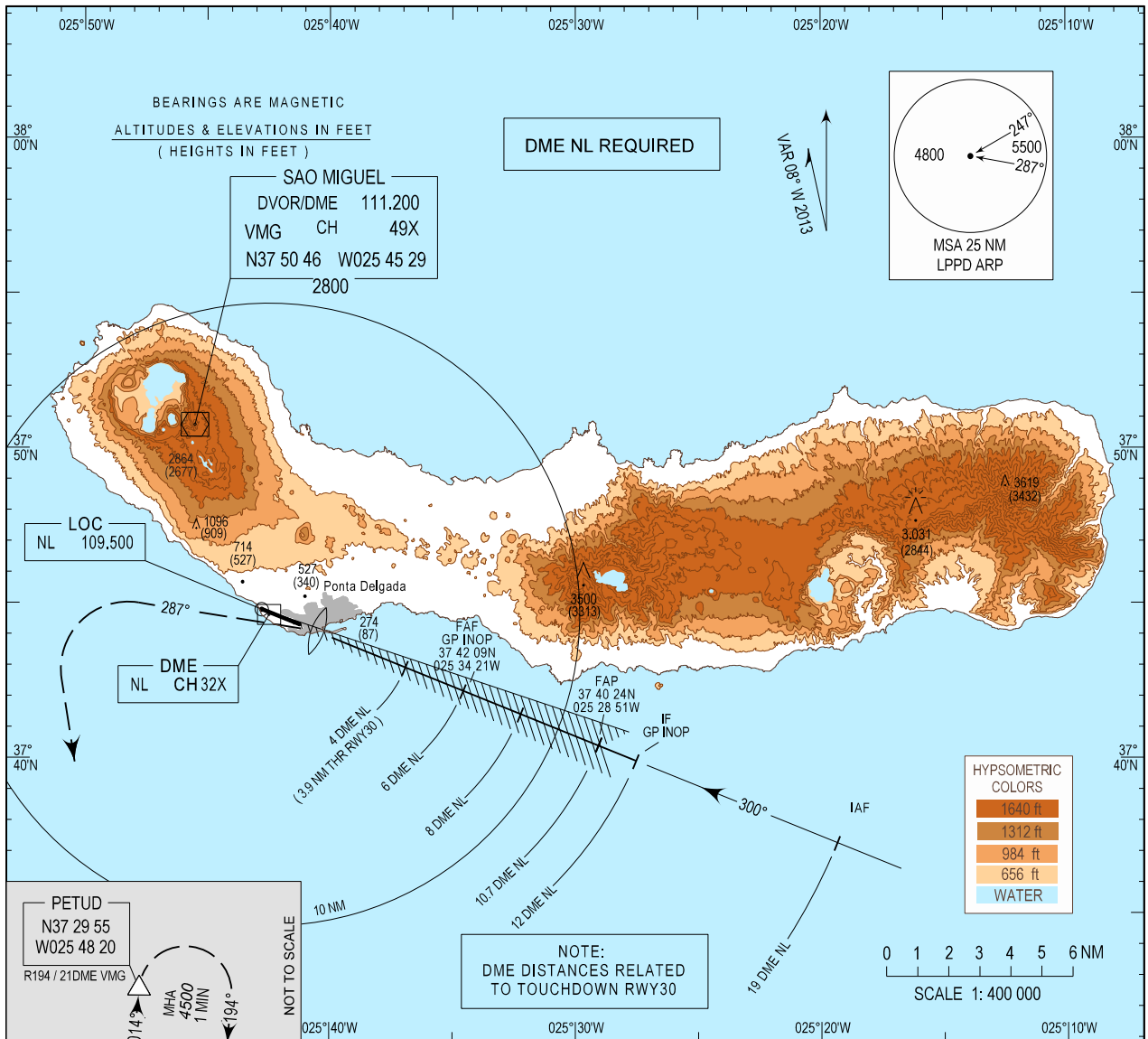


INSTRUMENT
APPROACH
CHART - ICAO

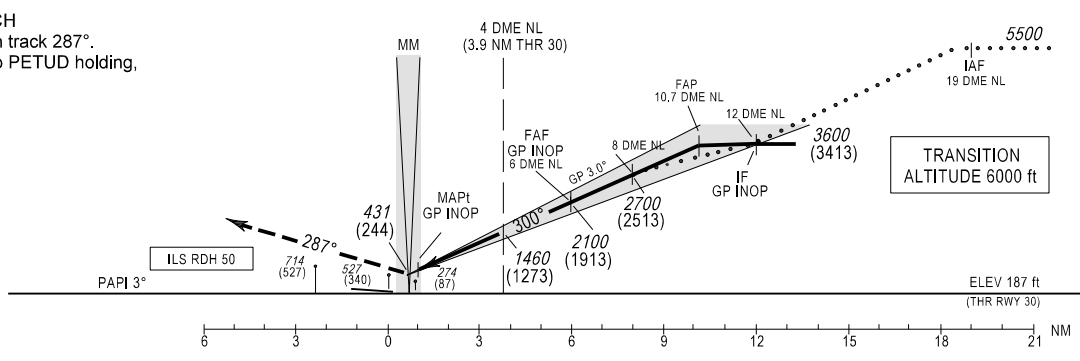
AD ELEV 259 ft
HEIGHTS RELATED
THR RWY 30 - ELEV 187 ft

APP 119.400
TWR 118.300

PONTA DELGADA/LPPD
ILS-Z or LOC
RWY30
CAT C-D



MISSED APPROACH
Turn left climbing on track 287°. At 2000 ft turn left to PETUD holding, climbing to 4500 ft. CTC APP.



OCA (H)	CATEGORY		C	D
	CAT I	CAT II		
ILS	CAT I		428(241)	438(251)
	GP INOP		530 (350)	
CIRCLING	NORTH RWY 30		NOT AUTHORIZED	
	SOUTH RWY 30		850	950

DME-NL	GP INOP							
	8	7	6	5	4	3	2	
ALTITUDE HEIGHT	2700(2513)	2400(2213)	2100(1913)	1780(1593)	1460(1273)	1145(958)	825(638)	
Speed	kt	100	120	140	160	180	200	220
Rate of descent (5.2%)	ft/min	525	630	735	840	945	1050	1160

MSA changed. PETUD RDL and DIST inserted.