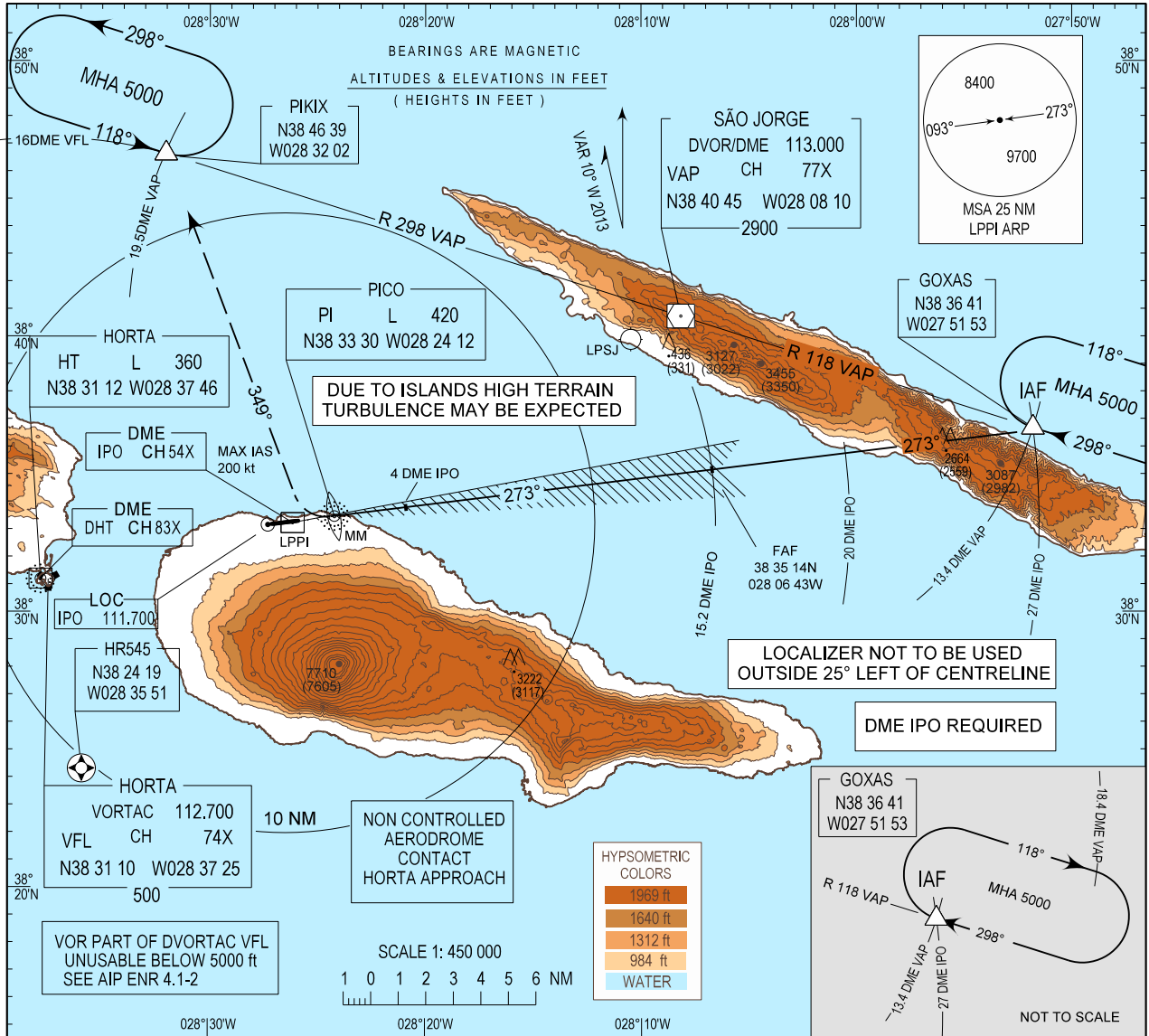


INSTRUMENT APPROACH CHART - ICAO

AD ELEV 114 ft
HEIGHTS RELATED
THR RWY 27 - ELEV 105 ft

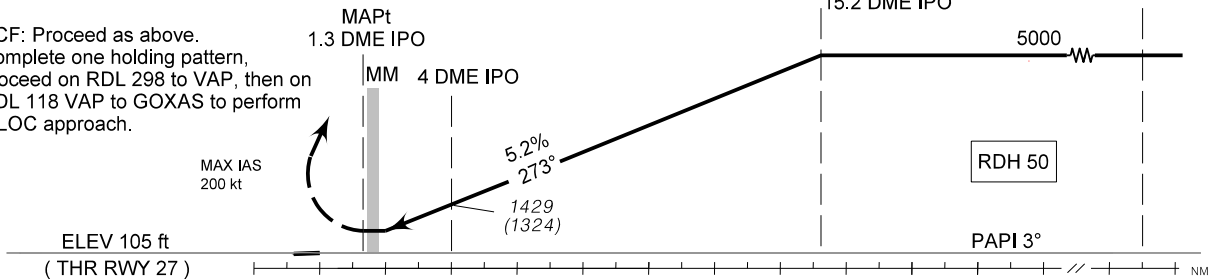
PICO INFORMATION 122.700
HORTA APPROACH 120.600
HORTA TOWER 118.000
SANTA MARIA RADAR 132.150

PICO / LPPI
LOC
RWY27



MISSED APPROACH:
At 1.3 DME IPO turn right on heading 349° climbing to 5000 ft then proceed to holding PIKIX on RDL 298 VAP.
Maximum IAS on turn 200 kt.
CTC Horta APP.

RCF: Proceed as above.
Complete one holding pattern, proceed on RDL 298 to VAP, then on RDL 118 VAP to GOXAS to perform a LOC approach.



CAT	LOC		CIRCLING RWY27			
	MDA/H	OCH	NORTH		SOUTH	
			MDA/H	OCH	MDA/H	OCH
A	740 (640)	635	1060 (946)	940	NOT AUTHORIZED	
B	740 (640)	635	1060 (946)	940	NOT AUTHORIZED	
C	740 (640)	635	1210 (1096)	1090	NOT AUTHORIZED	

		RATE OF DESCEND (5.2%)						
kt	ft/min	100	120	140	160	180	200	220
		525	630	735	840	945	1050	1160

		DIST DME IPO														
NM	ALTITUDE (HEIGHT)	2	3	4	5	6	7	8	9	10	11	12	13	14	15	
		792 (687)	1110 (1005)	1429 (1324)	1747 (1642)	2066 (1961)	2384 (2279)	2703 (2598)	3021 (2916)	3340 (3235)	3658 (3553)	3976 (3871)	4295 (4190)	4613 (4508)	4932 (4827)	

New DME DHT.