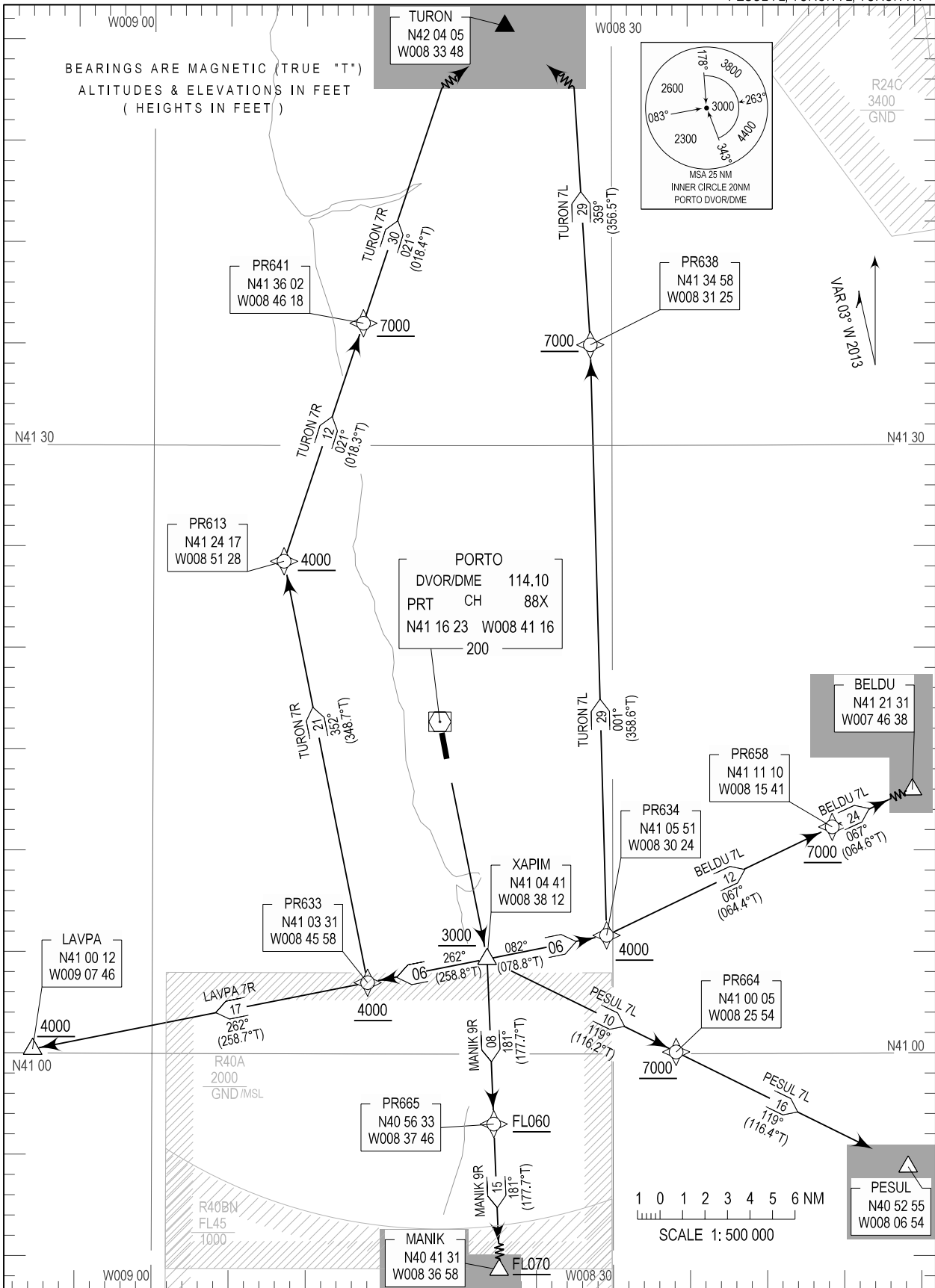


STANDARD DEPARTURE CHART - INSTRUMENT (SID) - ICAO

TRANSITION ALTITUDE 4000

TWR 118.000 APP 121.100

PORTO (LPPR) RNAV RWY 17
BELDU 7L, LAVPA 7R, MANIK 9R
PESUL 7L, TURON 7L, TURON 7R



New MAG Variation (2013). SIDs changed

STANDARD INSTRUMENT DEPARTURE (SID) FMS RNAV RWY 17

RUNWAY 17				
Designator	Route	After Take-off		Remarks
		Climb to ALT /FL	Contact	
BELDU 7L	Climb straight ahead to XAPIM (to cross at 3000FT or above). At XAPIM turn left to PR634 (to cross at 4000FT or above) - PR658 (to cross at 7000FT or above) - BELDU	FL070	Porto Approach 121.100MHZ	
LAVPA 7R	Climb straight ahead to XAPIM (to cross at 3000FT or above). At XAPIM turn right to PR633 (to cross at 4000FT or above) - LAVPA			
MANIK 9R	Climb straight ahead to XAPIM (to cross at 3000FT or above). At XAPIM turn right to PR665 (to cross at FL060 or above) - MANIK (to cross at FL070 or above).			
PESUL 7L	Climb straight ahead to XAPIM (to cross at 3000FT or above). At XAPIM turn left to PR664 (to cross at 7000FT or above) - PESUL			
TURON 7L	Climb straight ahead to XAPIM (to cross at 3000FT or above). At XAPIM turn left to PR634 (to cross at 4000FT or above) - PR638 to cross at 7000FT or above - TURON			
TURON 7R	Climb straight ahead to XAPIM (to cross at 3000FT or above). At XAPIM turn right to PR633 (to cross at 4000FT or above) - PR613 - PR641 to cross at 7000FT or above - TURON			