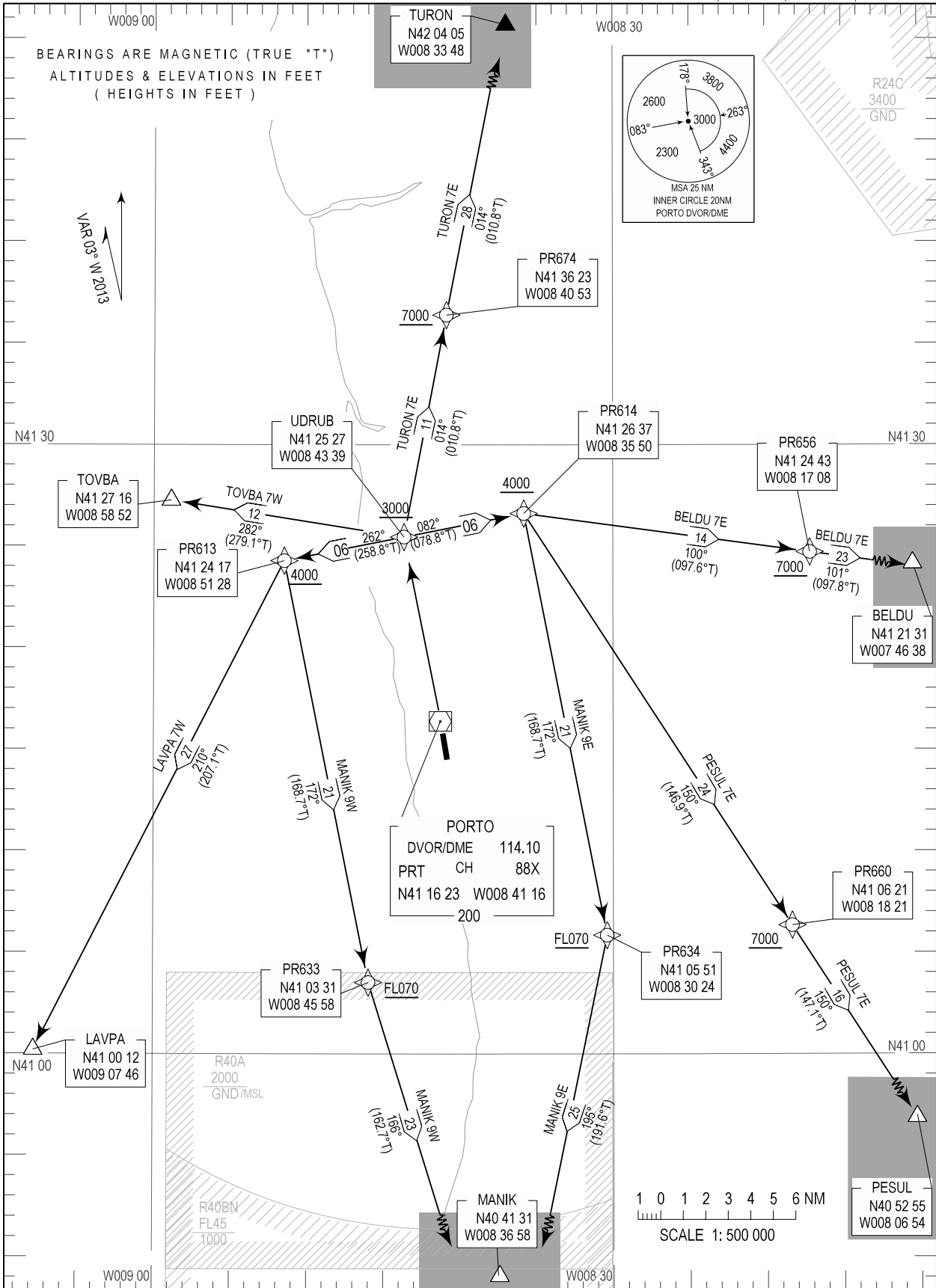


STANDARD DEPARTURE CHART - INSTRUMENT (SID) - ICAO

TRANSITION ALTITUDE 4000

TWR 118.000 APP 121.100

PORTO (LPPR) RNAV Rwy 35 BELDU 7E, LAVPA 7W, PESUL 7E MANIK 9E, MANIK 9W, TOVBA 7W, TURON 7E



STANDARD INSTRUMENT DEPARTURE (SID) FMS RNAV RWY 35

RUNWAY 35				
Designator	Route	After Take-off		Remarks
		Climb to ALT / FL	Contact	
BELDU 7E	Climb straight ahead to UDRUB (to cross at 3000FT or above). At UDRUB turn right to PR614 (to cross at 4000FT or above) - PR656 (to cross at 7000FT or above) - BELDU	FL070	Porto Approach 121.100MHZ	
LAVPA 7W	Climb straight ahead to UDRUB (to cross at 3000FT or above). At UDRUB turn left to PR613 (to cross at 4000FT or above) - LAVPA			
PESUL 7E	Climb straight ahead to UDRUB (to cross at 3000FT or above). At UDRUB turn right to PR614 (to cross at 4000FT or above) - PR660 (to cross at 7000FT or above) - PESUL			
MANIK 9E	Climb straight ahead to UDRUB (to cross at 3000FT or above). At UDRUB turn right to PR614 (to cross at 4000FT or above) - PR634 to cross at FL070 or above - MANIK			
MANIK 9W	Climb straight ahead to UDRUB (to cross at 3000FT or above). At UDRUB turn left to PR613 (to cross at 4000FT or above) - PR633 to cross at FL070 or above - MANIK			
TOVBA 7W	Climb straight ahead to UDRUB (to cross at 3000FT or above). At UDRUB turn left to TOVBA			
TURON 7E	Climb straight ahead to UDRUB (to cross at 3000FT or above). At UDRUB turn right to PR674 (to cross at 7000FT or above) - TURON			