

STANDARD DEPARTURE CHART -
INSTRUMENT (SID) - ICAO

PORTO SANTO TOWER 120.055
MADEIRA APPROACH 119.605

PORTO SANTO / LPPR
RWY36
ABUSU 8N, DEGUN 8N, LIDRO 8N
NIKAV 8N, RAKUN 8N, TABOM 8N

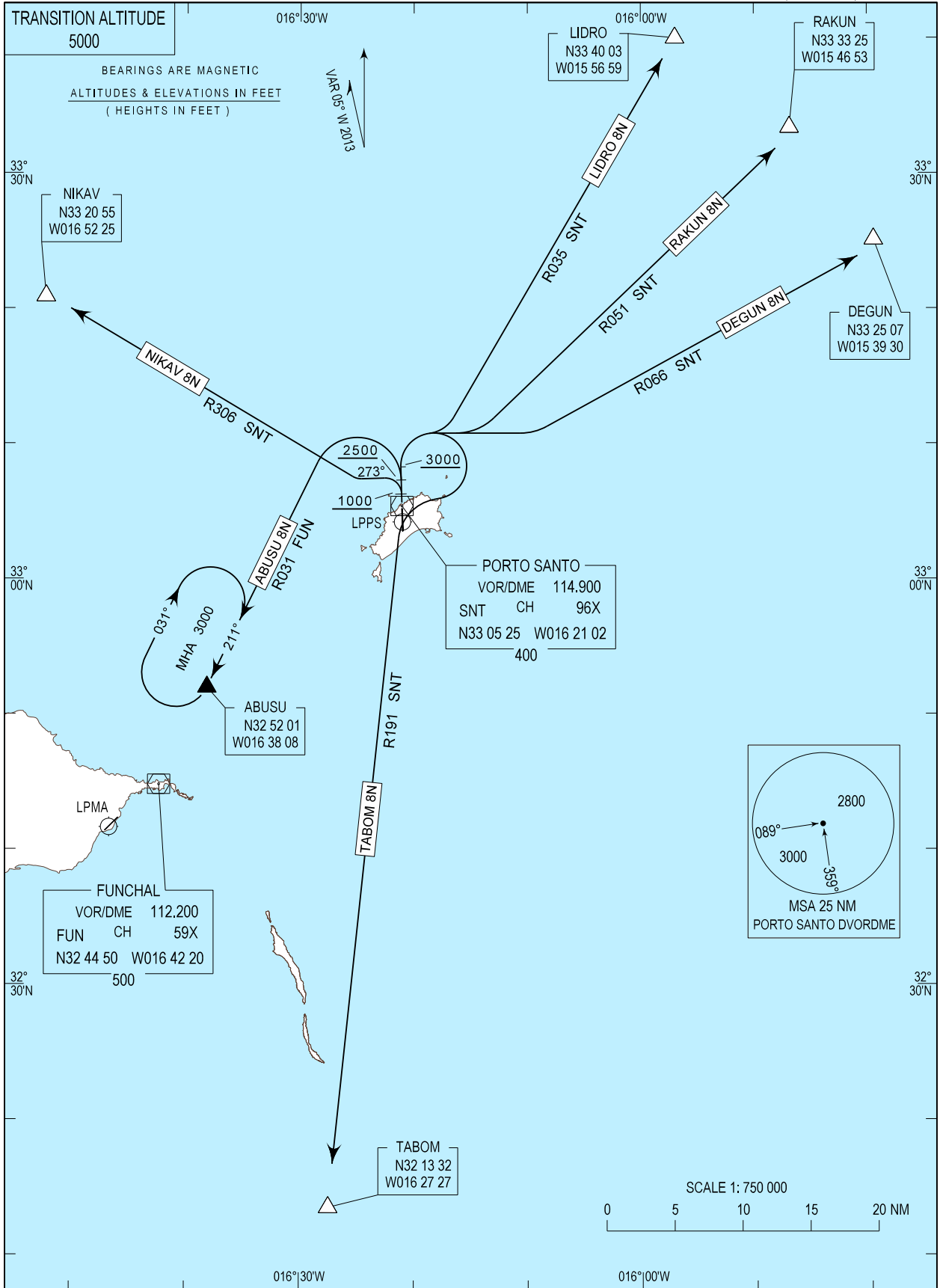


Chart redrawn.

STANDARD INSTRUMENT DEPARTURE (SID) RWY 36

RUNWAY 36				
Designator	Route	After Take-off		Remarks
		Climb to ALT / FL	Contact	
ABUSU8N	Climb straight ahead; above 2500FT QNH turn left to intercept and proceed RDL031 FUN DVOR/DME, to Holding ABUSU	FL060	Madeira Approach 119.605 MHZ	
DEGUN8N	Climb straight ahead; above 3000FT QNH turn right to intercept and proceed on RDL066 SNT DVOR/DME to DEGUN	FL060		
LIDRO8N	Climb straight ahead; above 3000FT QNH turn right to intercept and proceed on RDL035 SNT DVOR/DME to LIDRO	FL060		To be used pending traffic conditions
NIKAV8N	Climb straight ahead; after passing SNT DVOR/DME and above 1000FT QNH turn left to MAG Track 273 to intercept and proceed on RDL306 SNT DVOR/DME to NIKAV	FL060		
RAKUN8N	Climb straight ahead; above 3000ft QNH turn right to intercept and proceed on RDL051 SNT DVOR/DME to RAKUN	FL060		To be used pending traffic conditions
TABOM8N	Climb straight ahead; above 3000FT QNH turn right to SNT DVOR/DME, intercept and proceed on RDL191 SNT DVOR/DME to TABOM	FL060		