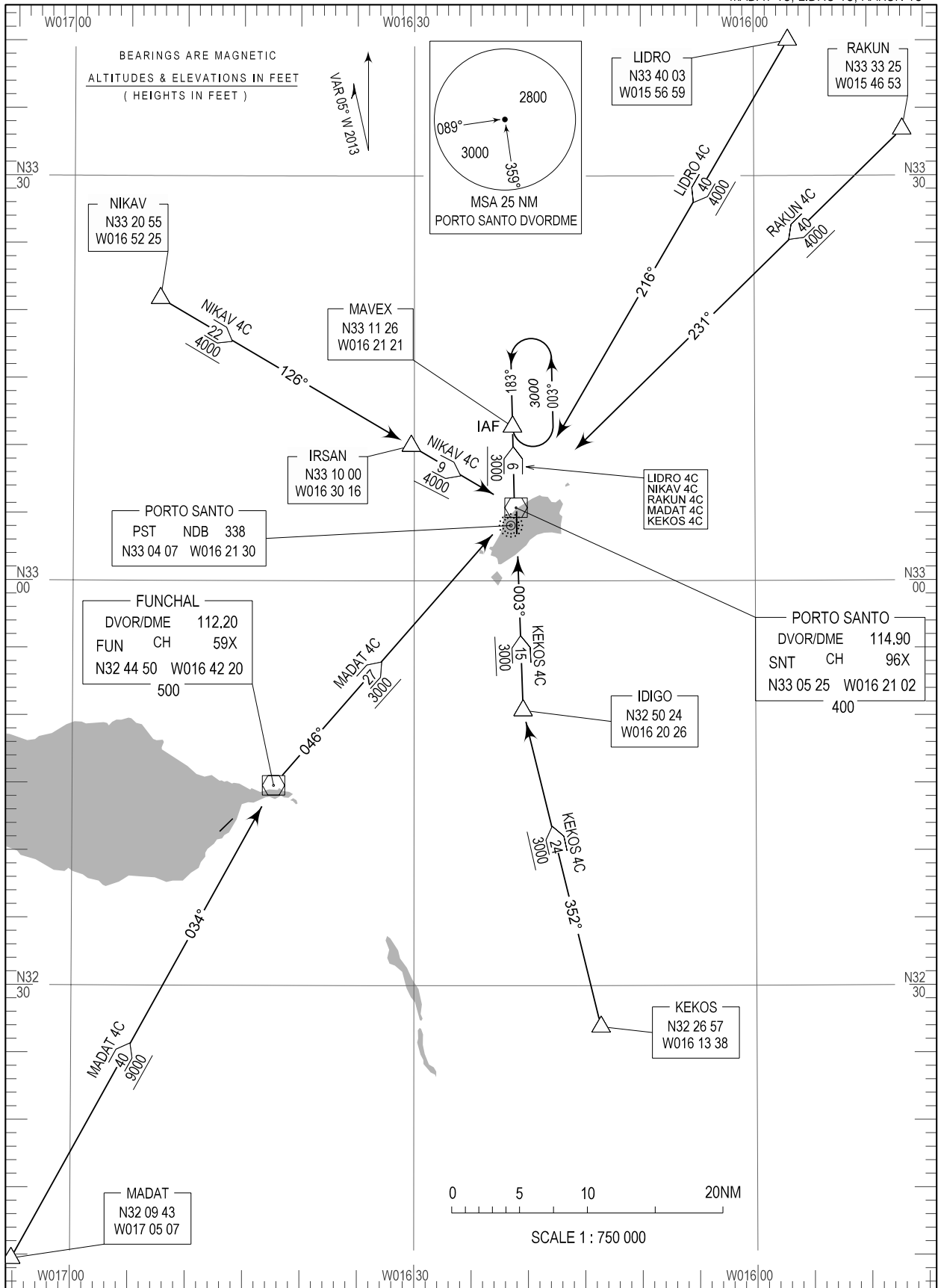


STANDARD ARRIVAL CHART -  
INSTRUMENT (STAR) - ICAO

TRANSITION ALTITUDE	MADEIRA	APP	119.600
5000	PORTO SANTO	TWR	120.050

PORTO SANTO (LPPS)  
RWY 18  
KEKOS 4C, NIKAV 4C  
MADAT 4C, LIDRO 4C, RAKUN 4C



New MAG Variation (2013). STARs changed

STANDARD ARRIVAL INSTRUMENT (STAR) RWY 18

RUNWAY 18					
Designator	Identification Significant Points	MAGTrack	DIST NM	Minimum safe ALT	Remarks
KEKOS4C	KEKOS	352	024	3000	To be used RWY 18 Clearance Limit: MAVEX
	IDIGO	003	015	3000	
	SNT DVOR/DME	003	006	3000	
	MAVEX				
NIKAV4C	NIKAV	126	022	4000	To be used RWY 18 Clearance Limit: MAVEX
	IRSAN	126	009	4000	
	SNT DVOR/DME	003	006	3000	
	MAVEX				
MADAT4C	MADAT	034	040	9000	To be used RWY 18 Clearance Limit: MAVEX
	FUN DVOR/DME	046	027	3000	
	SNT DVOR/DME	003	006	3000	
	MAVEX				
LIDRO4C	LIDRO	216	040	4000	To be used RWY 18 Clearance Limit: MAVEX To be used pending traffic conditions
	SNT DVOR/DME	003	006	3000	
	MAVEX				
RAKUN4C	RAKUN	231	040	4000	To be used RWY 18 Clearance Limit: MAVEX To be used pending traffic conditions
	SNT DVOR/DME	003	006	3000	
	MAVEX				