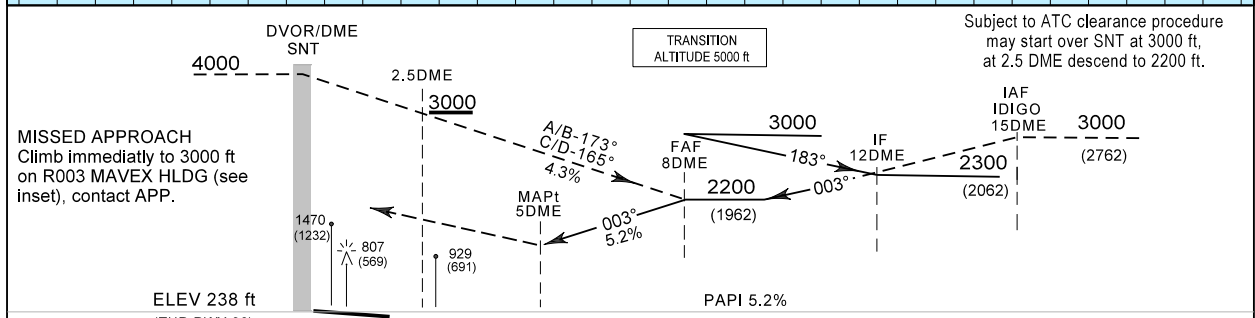
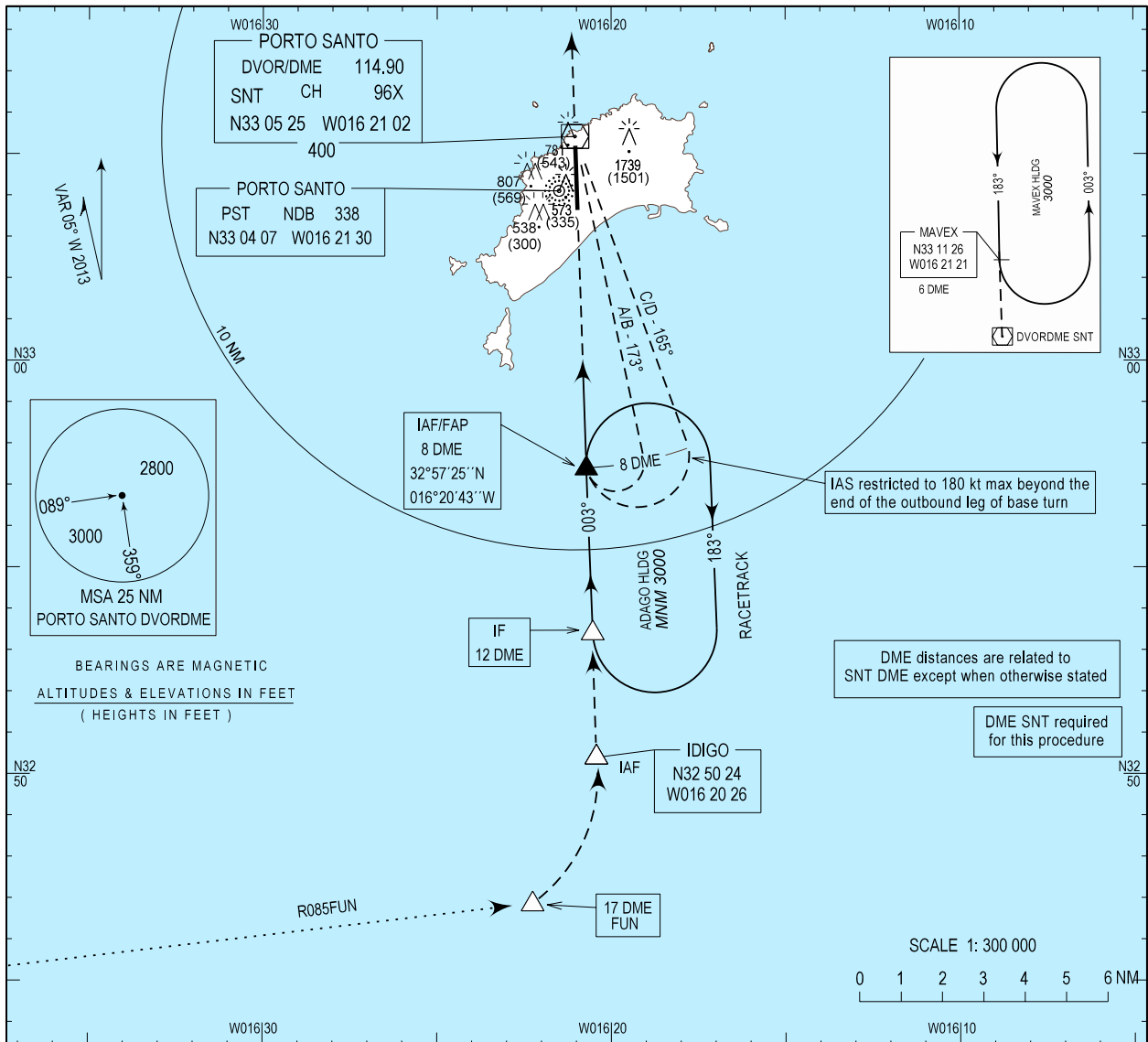


INSTRUMENT  
APPROACH  
CHART - ICAO

AD ELEV 338 ft  
HEIGHTS RELATED  
THR RWY 36 - ELEV 238 ft

MADEIRA APP 119.600  
PORTO SANTO TWR 120.050

PORTO SANTO (LPPS)  
DVOR  
RWY 36  
CAT A/B/C/D



CATEGORY	OCA (H)	
	A-B	C-D
STRAIGHT-IN	1040 (810)	1080 (850)
CIRCLING	NOT AUTHORIZED	
	EAST RWY 18/36	1230
	WEST RWY 18/36	1330

DME/SNT	7	6	5	4	3
ALTITUDE	1885	1570	-	-	-

Speed	kt	80	100	120	140	160	180	200
Rate of descent (5.2%)	ft / min	420	525	630	735	840	945	1050

IAF/FAP 8 DME Coordinates corrected to 325725N0162043W