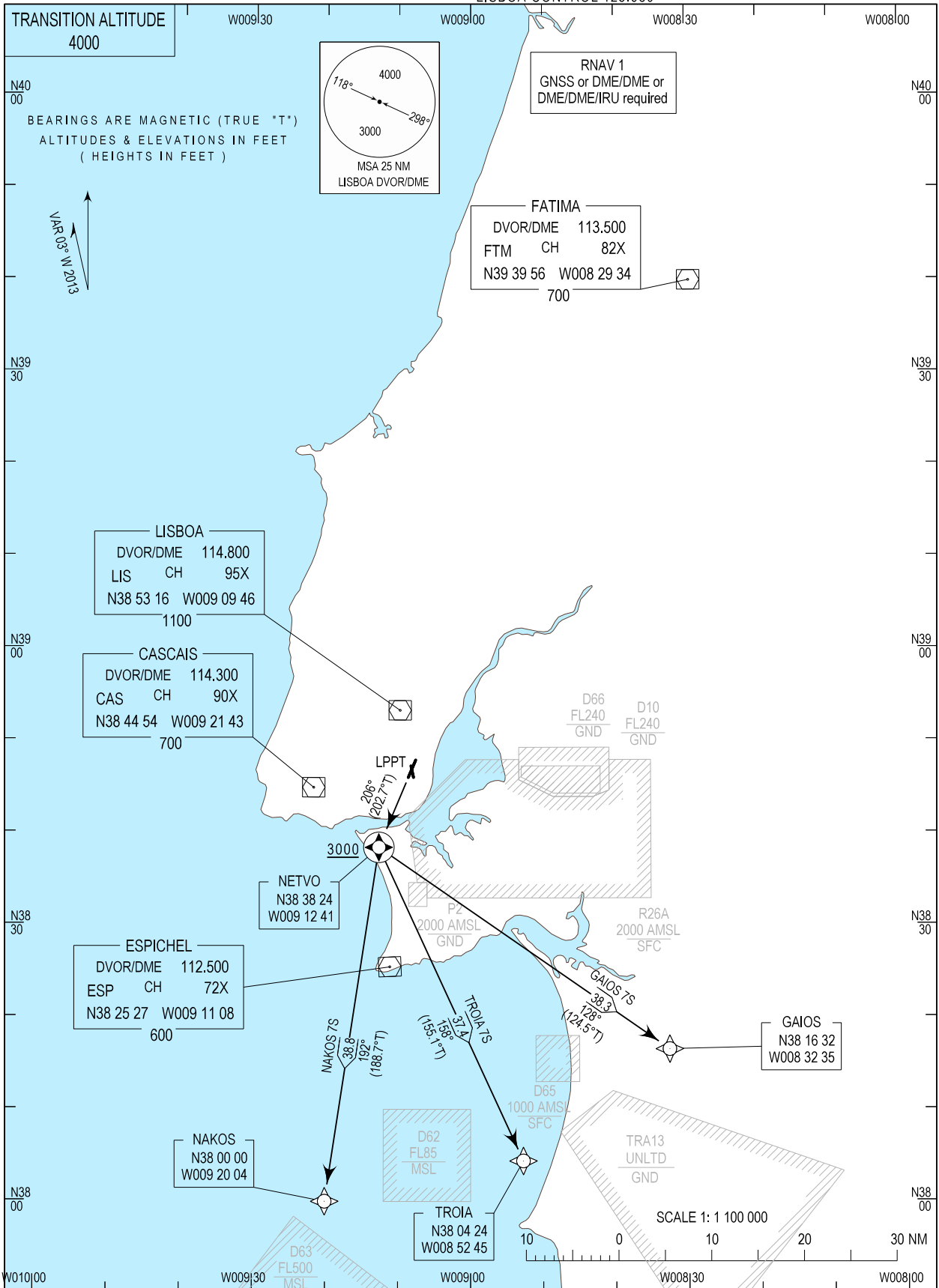


STANDARD DEPARTURE CHART - INSTRUMENT (SID) - ICAO

LISBOA DEP INFORMATION 121.955  
LISBOA TOWER 118.105  
LISBOA APPROACH 119.105  
LISBOA CONTROL 123.980

LISBOA / LPPT  
RNAV RWY21  
GAIOS 7S, NAKOS 7S, TROIA 7S



New CS and FREQ. Chart redrawn.

SID Procedure Coding Table

Lisboa SID RNAV 1 RWY 21 GAIOS7S

Path Terminator	Waypoint			Course/Track MAG (True)	Dist NM	Turn Direction	Constraints		Nav Specs	Remarks
	Identifier	Flyover	Coordinates				Level	Speed		
CF	NETVO	Yes	383824.16N 0091241.03W	206 (202.7)	-	-	+3000'	-	RNAV 1	-
TF	GAIOS	-	381631.88N 0083235.19W	128 (124.5)	38.33	Left	-	-	RNAV 1	

Designator	Route	After Take-off		Remarks
		Climb to ALT/FL	Contact	
GAIOS7S	Climb straight ahead to NETVO. Turn left to GAIOS.	FL060	LISBOA APPROACH. When passing 1000ft QNH mentioning only the call sign and passing altitude. 119.105 MHz as announced by ATIS departure.	-

SID Procedure Coding Table

Lisboa SID RNAV 1 RWY 21 NAKOS7S

Path Terminator	Waypoint			Course/Track MAG (True)	Dist NM	Turn Direction	Constraints		Nav Specs	Remarks
	Identifier	Flyover	Coordinates				Level	Speed		
CF	NETVO	Yes	383824.16N 0091241.03W	206 (202.7)	-	-	+3000'	-	RNAV 1	-
TF	NAKOS	-	380000.00N 0092004.18W	192 (188.7)	38.80	Left	-	-	RNAV 1	

Designator	Route	After Take-off		Remarks
		Climb to ALT/FL	Contact	
NAKOS7S	Climb straight ahead to NETVO. Turn left to NAKOS.	FL060	LISBOA APPROACH. When passing 1000ft QNH mentioning only the call sign and passing altitude. 119.105 MHz as announced by ATIS departure.	-

SID Procedure Coding Table

Lisboa SID RNAV 1 RWY 21 TROIA7S

Path Terminator	Waypoint			Course/Track MAG (True)	Dist NM	Turn Direction	Constraints		Nav Specs	Remarks
	Identifier	Flyover	Coordinates				Level	Speed		
CF	NETVO	Yes	383824.16N 0091241.03W	206 (202.7)	-	-	+3000'	-	RNAV 1	-
TF	TROIA	-	380423.71N 0085244.95W	158 (155.1)	37.42	Left	-	-	RNAV 1	

Designator	Route	After Take-off		Remarks
		Climb to ALT/FL	Contact	
TROIA7S	Climb straight ahead to NETVO. Turn left to TROIA.	FL060	LISBOA APPROACH. When passing 1000ft QNH mentioning only the call sign and passing altitude. 119.105 MHz as announced by ATIS departure.	-