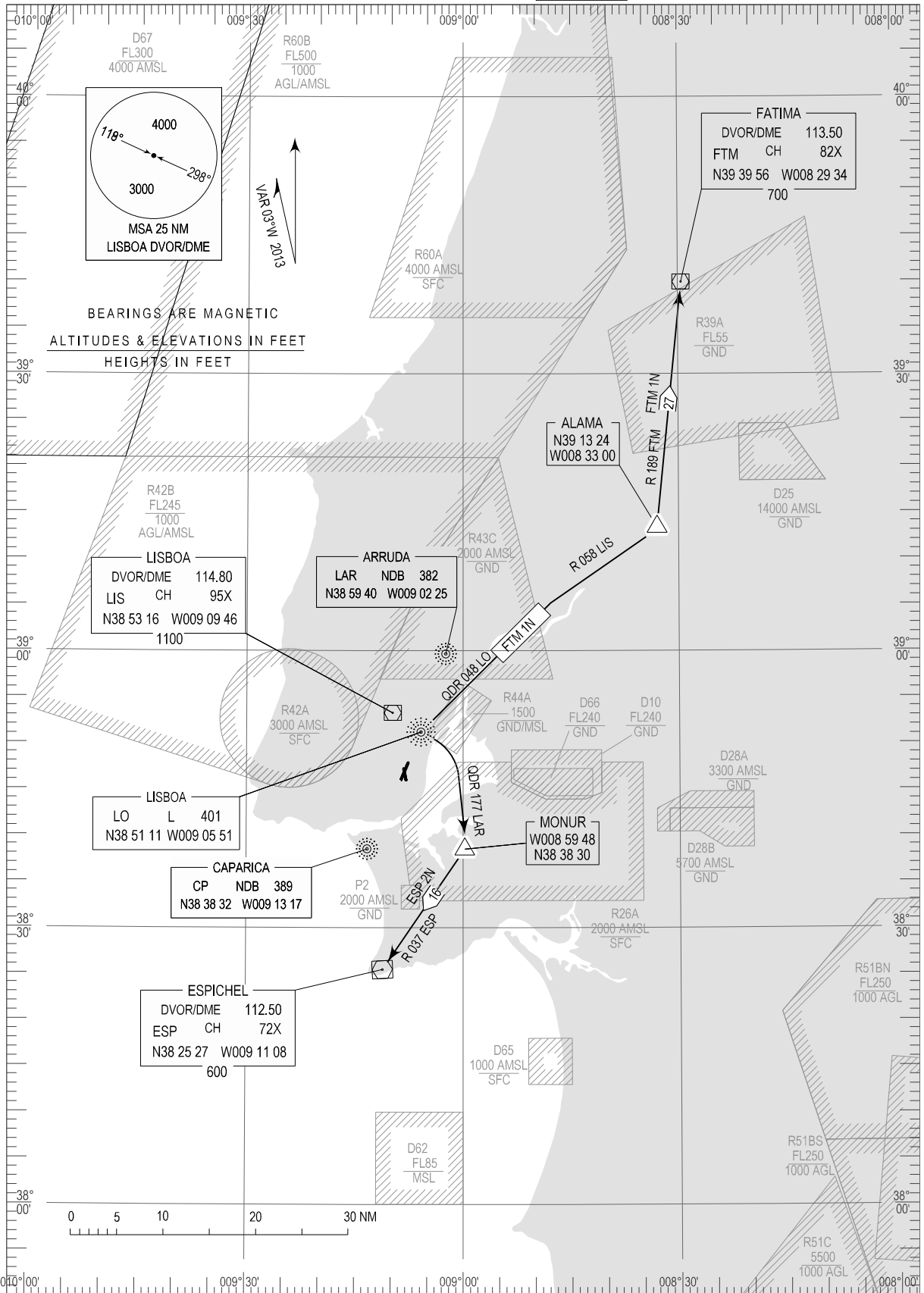


STANDARD DEPARTURE CHART -
INSTRUMENT (SID) - ICAO

LISBOA (LPPT)
RWY03/35
ESP 2N, FTM 1N

TRANSITION ALTITUDE
4000
TWR 118.100
APP 119.100
ACC 125.125



Contact changed on page 2

STANDARD INSTRUMENT DEPARTURE (SID) RWY 03/35				
RUNWAY 03/35				
Designator	Route	After Take-off		Remarks
		Climb to ALT / FL	Contact	
ESP2N	Climb straight ahead. At 2000FT QNH turn right to intercept and proceed on QDR177 LAR NDB to MONUR, intercept and proceed on RDL037 to ESP DVOR/DME.	FL060	LISBOA APPROACH When passing 1000ft QNH mentioning only the callsign and passing altitude (119.100 MHz or 125.125MHz) as announced by ATIS departure	Not below 2500FT QNH on QDR177 LAR NDB.
FTM1N	Climb straight ahead. At 2000FT QNH turn right to intercept and proceed on QDR048 LO LOCATOR, intercept and proceed on RDL058 LIS DVOR/DME to ALAMA, intercept and proceed on RDL189 to FTM DVOR/DME.	FL060		