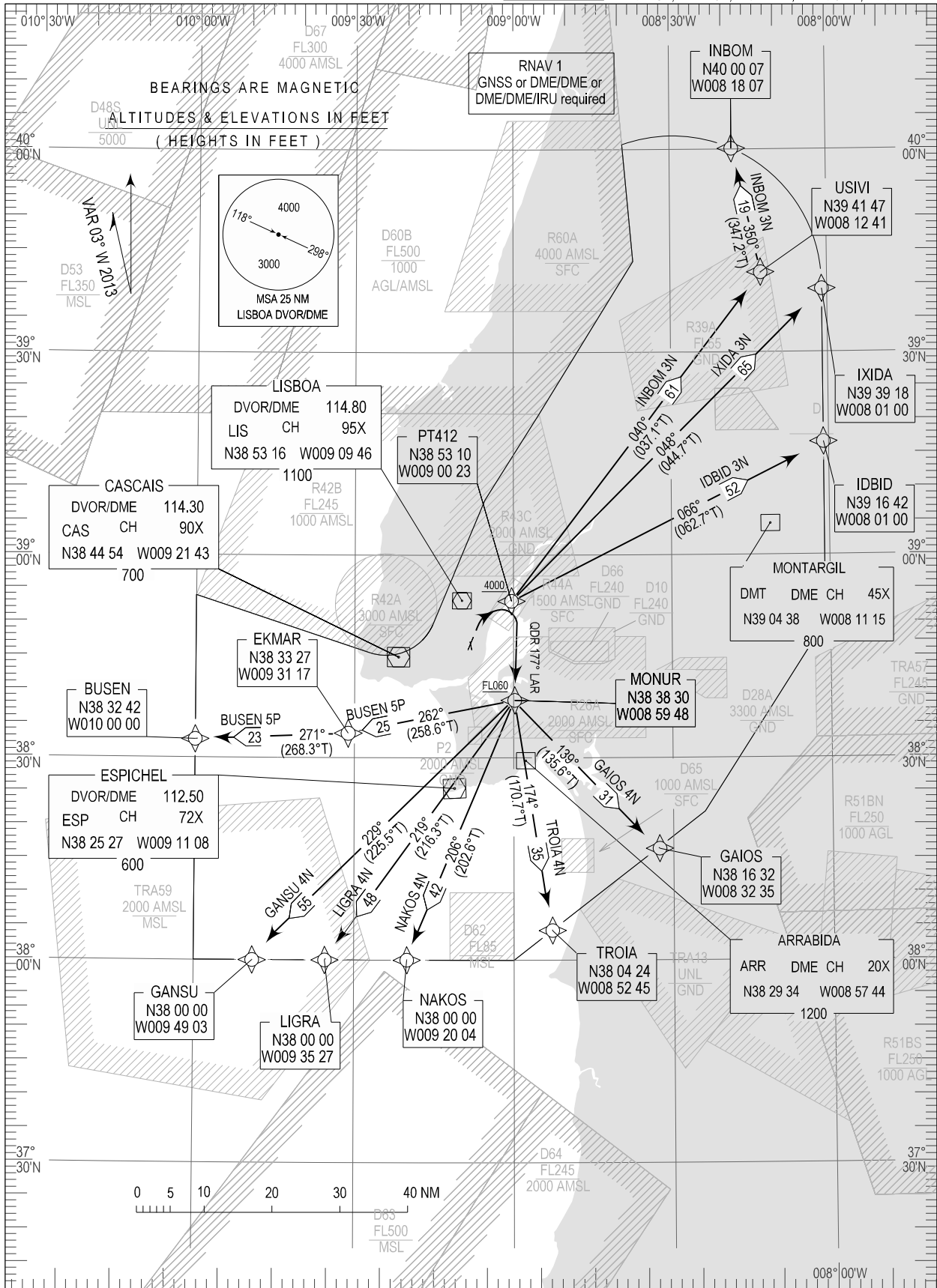


STANDARD DEPARTURE CHART - INSTRUMENT (SID) - ICAO

TRANSITION ALTITUDE 4000	TWR 118.100 APP 119.100 ACC 125.125
-----------------------------	---

LISBOA (LPPT)
RNAV RWY 03/35
BUSEN 5P, GAIOS 4N, GANSU 4N, IDBID 3N
INBOM 3N, IXIDA 3N, LIGRA 4N, NAKOS 4N, TROIA 4N



RNAV 1 GNSS or DME/DME/IRU required. SID changed: BUSEN 5P GAIOS4N GANSU4N LIGRA4N NAKOS4N TROIA4N

STANDARD INSTRUMENT DEPARTURE (SID) RWY 03/35				
RNAV 1 – GNSS or DME/DME or DME/DME/IRU				
Designator	Route	After Take-off		Remarks
		Climb to ALT / FL	Contact	
BUSEN5P	Climb straight ahead. At 2000FT QNH turn right to intercept and proceed on QDR177 LAR NDB to MONUR (to cross at FL060 or above). Proceed to EKMAR - BUSEN.	FL060	LISBOA APPROACH When passing 1000ft QNH mentioning only the callsign and passing altitude (119.100 MHz or 125.125MHz) as announced by ATIS departure	Note 1 - Not below 2500FT QNH on QDR177 LAR NDB. Note 2 - Critical DME: ESP, MTR and NSA at FL060 until 60NM
GAIOS4N	Climb straight ahead. At 2000FT QNH turn right to intercept and proceed on QDR177 LAR NDB to MONUR (to cross at FL060 or above). Proceed to GAIOS.	FL060		Not below 2500FT QNH on QDR 177 LAR NDB.
GANSU4N	Climb straight ahead. At 2000FT QNH turn right to intercept and proceed on QDR177 LAR NDB to MONUR (to cross at FL060 or above). Proceed to GANSU.	FL060		Not below 2500FT QNH on QDR 177 LAR NDB.
IDBID3N	Climb straight ahead; at 2000FT QNH turn right to intercept and proceed on RDL 068 CAS DVOR/DME (or QDR068 LO Locator) to PT412 (to cross at 4000FT or above). Proceed to IDBID.	FL060		Above FL245 to UREDI and OGERO. Below FL245 to PORTA
INBOM3N	Climb straight ahead. At 2000FT QNH turn right to intercept and proceed on RDL068 CAS DVOR/DME (or QDR068 LO Locator) to PT412 (to cross at 4000FT or above). Proceed to USIVI - INBOM	FL060		
IXIDA3N	Climb straight ahead; at 2000FT QNH turn right to intercept and proceed on RDL068 CAS DVOR/DME (or QDR068 LO Locator) to PT412 (to cross at 4000FT or above). Proceed to IXIDA.	FL60		Above FL245 to TOSDI Below FL245 to RIVRO
LIGRA4N	Climb straight ahead. At 2000FT QNH turn right to intercept and proceed on QDR177 LAR NDB to MONUR (to cross at FL060 or above). Proceed to LIGRA.	FL060		Not below 2500FT QNH on QDR 177 LAR NDB.
NAKOS4N	Climb straight ahead. At 2000ft QNH turn right to intercept and proceed on QDR177 LAR NDB to MONUR (to cross at FL060 or above). Proceed to NAKOS.	FL060		Not below 2500FT QNH on QDR 177 LAR NDB.
TROIA4N	Climb straight ahead; at 2000ft QNH turn right to intercept and proceed on QDR177 LAR NDB to MONUR (to cross at FL060 or above). Proceed to TROIA.	FL060		Not below 2500FT QNH on QDR 177 LAR NDB;