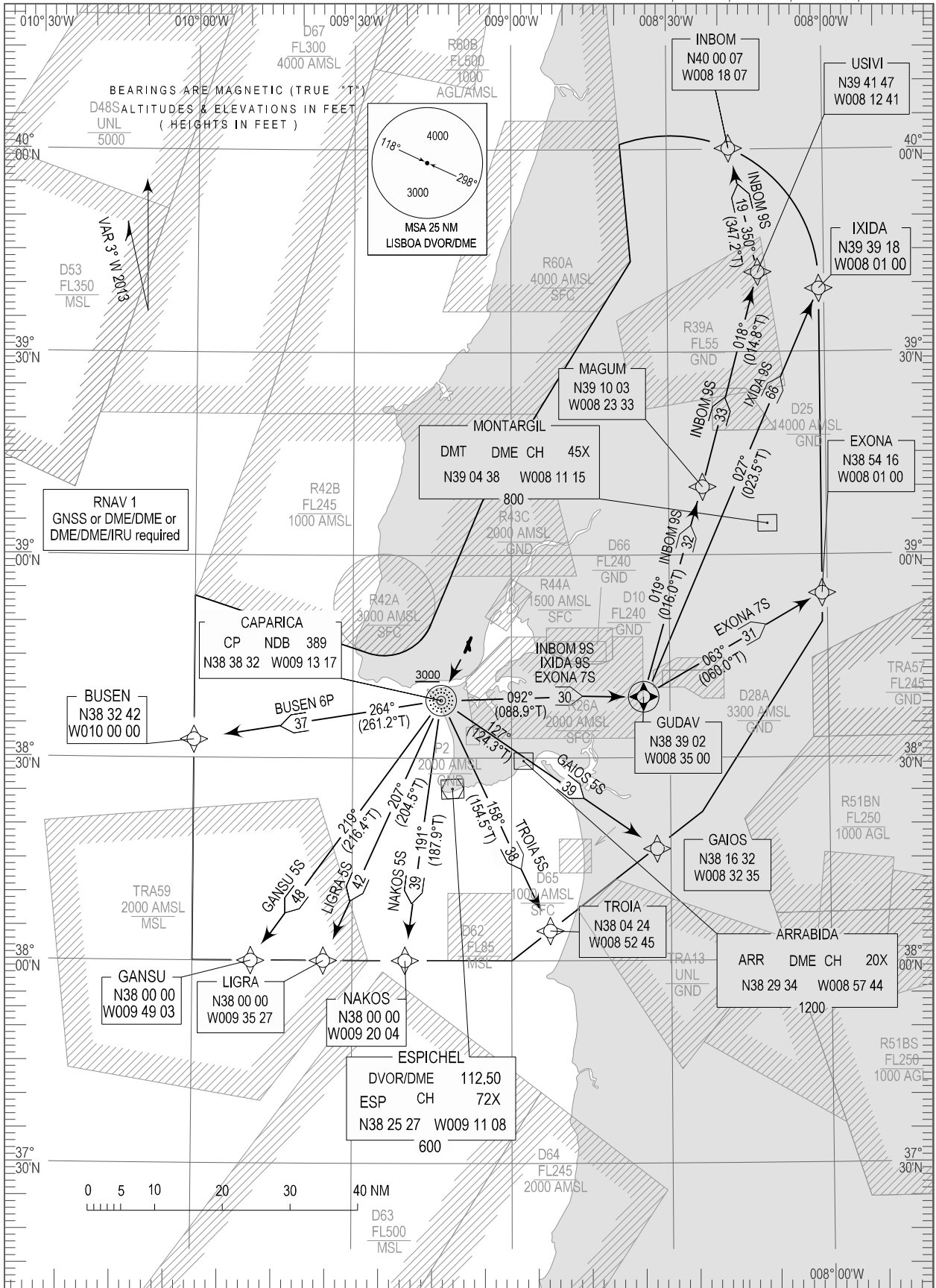


STANDARD DEPARTURE CHART -
INSTRUMENT (SID) - ICAO

TRANSITION ALTITUDE
4000
TWR 118.100
APP 119.100
ACC 125.125

LISBOA (LPPT)
RNAV Rwy 21
BUSEN 6P, EXONA 7S, GAIOS 5S, GANSU 5S
INBOM 9S, IXIDA 9S, LIGRA 5S, NAKOS 5S, TROIA 5S



RNAV 1 GNSS or DME/DME or DME/DME/IRU required. Contact changed on page 2.

STANDARD INSTRUMENT DEPARTURE (SID) RWY 21				
RNAV 1 – GNSS or DME/DME or DME/DME/IRU				
Designator	Route	After Take-off		Remarks
		Climb to ALT / FL	Contact	
BUSEN6P	Climb straight ahead to CP NDB (to cross at 3000ft or above). At CP NDB turn right to BUSEN.	FL060	LISBOA APPROACH When passing 1000ft QNH mentioning only the callsign and passing altitude (119.100 MHz or 125.125MHz) as announced by ATIS departure	Critical DME: ESP, MTR and NSA at FL060 until 60NM NDB CP - Flyover
EXONA7S	Climb straight ahead to CP NDB (to cross at 3000ft or above). At CP NDB turn left to GUDAV - EXONA.	FL060		Above FL245 to UREDI and OGERO. NDB CP/GUDAV – Flyover. Below FL245 to PORTA.
GAIOS5S	Climb straight ahead to CP NDB (to cross at 3000ft or above). At CP NDB turn left to GAIOS.	FL060		NDB CP –Flyover.
GANSU5S	Climb straight ahead to CP NDB (to cross at 3000ft or above). Proceed to GANSU.	FL060		NDB CP –Flyover.
IXIDA9S	Climb straight ahead to CP NDB (to cross at 3000ft or above). At CP NDB turn left to GUDAV - IXIDA.	FL060		Above FL245 to TOSDI Below FL245 to RIVRO NDB CP/GUDAV - Flyover
INBOM9S	Climb straight ahead to CP NDB (to cross at 3000ft or above). At CP NDB turn left to GUDAV – MAGUM – USIVI – INBOM.	FL60		NDB CP/GUDAV - Flyover
LIGRA5S	Climb straight ahead to CP NDB (to cross at 3000ft or above). Proceed to LIGRA.	FL060		NDB CP - Flyover
NAKOS5S	Climb straight ahead to CP NDB (to cross at 3000ft or above). At CP NDB turn left to NAKOS.	FL060		NDB CP - Flyover
TROIA5S	Climb straight ahead to CP NDB (to cross at 3000ft or above). At CP NDB turn left to TROIA.	FL060		NDB CP - Flyover