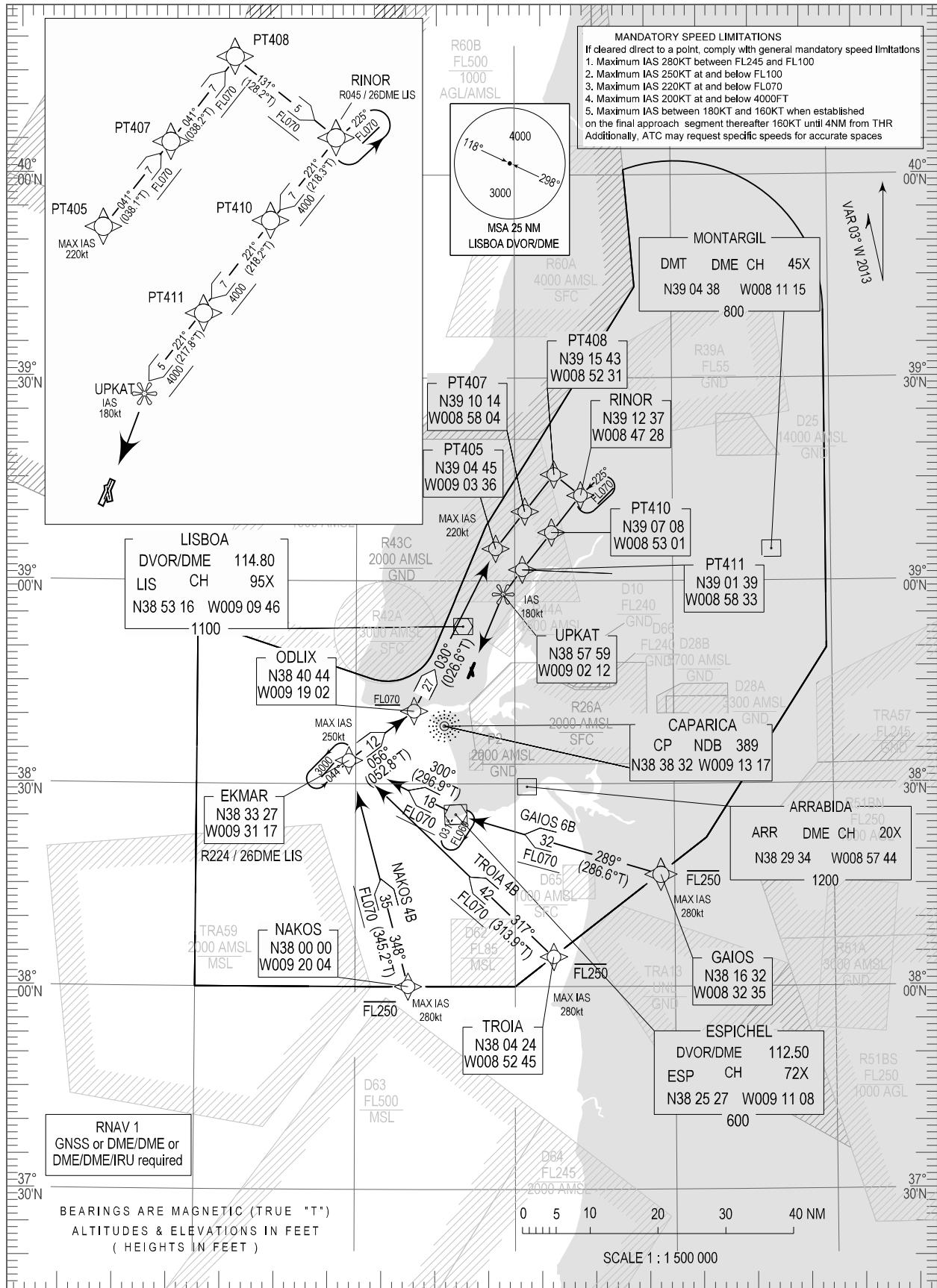


STANDARD ARRIVAL CHART -
INSTRUMENT (STAR) - ICAO

TRANSITION ALTITUDE
4000

TWR 118.100
APP 119.100
ACC 125.125

LISBOA (LPPT)
RNAV RWY 21
GAIOS 6B, NAKOS 4B, TROIA 4B



RNAV 1 GNSS or DME/DME or DME/DME/IRU required: GAIOS6B NAKOS4B TROIA4B.

STANDARD INSTRUMENT ARRIVAL (STAR) RUNWAY 21										
RNAV 1 – GNSS or DME/DME or DME/DME/IRU										
STAR RNAV 1 GAIOS 6B RWY 21										
Procedure Coding Table										
Path Terminator	Waypoint			Course/Track MAG (True)	Dist NM	Turn Direction	Constraints		Nav Specs	Remarks
	Identifier	Flyover	Coordinates				Level	Speed		
IF	GAIOS	-	383241.98N 010000.00W	-	-	-	-FL250	280Kt	RNAV 1	Clearance limit: UPKAT
TF	ESP	-	382527.39N 0091108.81W	290 (286.6)	31.617	-	-	-	RNAV 1	
TF	EKMAR	-	383326.56N 0093117.20W	300 (296.9)	17.711	Right	+FL070	250Kt	RNAV 1	
TF	ODLIX	-	384044.12N 0091901.50W	056 (052.8)	12.059	Right	-	-	RNAV 1	
TF	PT405	-	390444.84N 0090336.13W	030 (026.6)	26.842	Left	-	220Kt	RNAV 1	
TF	PT407	-	391014.20N 0085803.88W	041 (038.1)	6.975	Right	-	-	RNAV 1	
TF	PT408	-	391543.31N 0085230.77W	041 (038.2)	6.975	-	-	-	RNAV 1	
TF	RINOR	-	391237.34N 0084727.66W	131 (128.2)	5.000	Right	+FL070	-	RNAV 1	
TF	PT410	-	390708.47N 0085300.93W	221 (218.3)	6.975	Right	-	-	RNAV 1	
TF	PT411	-	390139.34N 0085833.34W	221 (218.2)	6.975	-	-	-	RNAV 1	
TF	UPKAT	-	385759.04N 0090212.05W	221 (217.8)	4.640	Right	+4000ft	180Kt	RNAV 1	

STAR RNAV 1 NAKOS 4B RWY 21										
Path Terminator	Waypoint			Course/Track MAG (True)	Dist NM	Turn Direction	Constraints		Nav Specs	Remarks
	Identifier	Flyover	Coordinates				Level	Speed		
IF	NAKOS	-	380000.00N 0092004.18W	-	-	-	-FL250	280Kt	RNAV 1	Clearance limit: UPKAT
TF	EKMAR	-	383326.56N 0093117.20W	348 (345.2)	34.56	-	+FL070	250Kt	RNAV 1	
TF	ODLIX	-	384044.12N 0091901.50W	056 (052.8)	12.06	Right	-	-	RNAV 1	
TF	PT405	-	390444.84N 0090336.13W	030 (026.6)	26.84	Left	-	220Kt	RNAV 1	
TF	PT407	-	391014.20N 0085803.88W	041 (038.1)	6.98	Right	-	-	RNAV 1	
TF	PT408	-	391543.31N 0085230.77W	041 (038.2)	6.98	-	-	-	RNAV 1	
TF	RINOR	-	391237.34N 0084727.66W	131 (128.2)	5.00	Right	+FL070	-	RNAV 1	
TF	PT410	-	390708.47N 0085300.93W	221 (218.3)	6.98	Right	-	-	RNAV 1	
TF	PT411	-	390139.34N 0085833.34W	221 (218.2)	6.98	-	-	-	RNAV 1	
TF	UPKAT	-	385759.04N 0090212.05W	221 (217.8)	4.64	Right	+4000ft	180Kt	RNAV 1	

STAR RNAV 1 TROIA 4B RWY 21										
Path Terminator	Waypoint			Course/Track MAG (True)	Dist NM	Turn Direction	Constraints		Nav Specs	Remarks
	Identifier	Flyover	Coordinates				Level	Speed		
IF	TROIA	-	380423.71N 0085244.95W	-	-	-	-FL250	280Kt	RNAV 1	Clearance limit: UPKAT
TF	EKMAR	-	383326.56N 0093117.20W	317 (313.9)	41.98	-	+FL070	250Kt	RNAV 1	
TF	ODLIX	-	384044.12N 0091901.50W	056 (052.8)	12.06	Right	-	-	RNAV 1	
TF	PT405	-	390444.84N 0090336.13W	030 (026.6)	26.84	Left	-	220Kt	RNAV 1	
TF	PT407	-	391014.20N 0085803.88W	041 (038.1)	6.98	Right	-	-	RNAV 1	
TF	PT408	-	391543.31N 0085230.77W	041 (038.2)	6.98	-	-	-	RNAV 1	
TF	RINOR	-	391237.34N 0084727.66W	131 (128.2)	5.00	Right	+FL070	-	RNAV 1	
TF	PT410	-	390708.47N 0085300.93W	221 (218.3)	6.98	Right	-	-	RNAV 1	
TF	PT411	-	390139.34N 0085833.34W	221 (218.2)	6.98	-	-	-	RNAV 1	
TF	UPKAT	-	385759.04N 0090212.05W	221 (217.8)	4.64	Right	+4000ft	180Kt	RNAV 1	