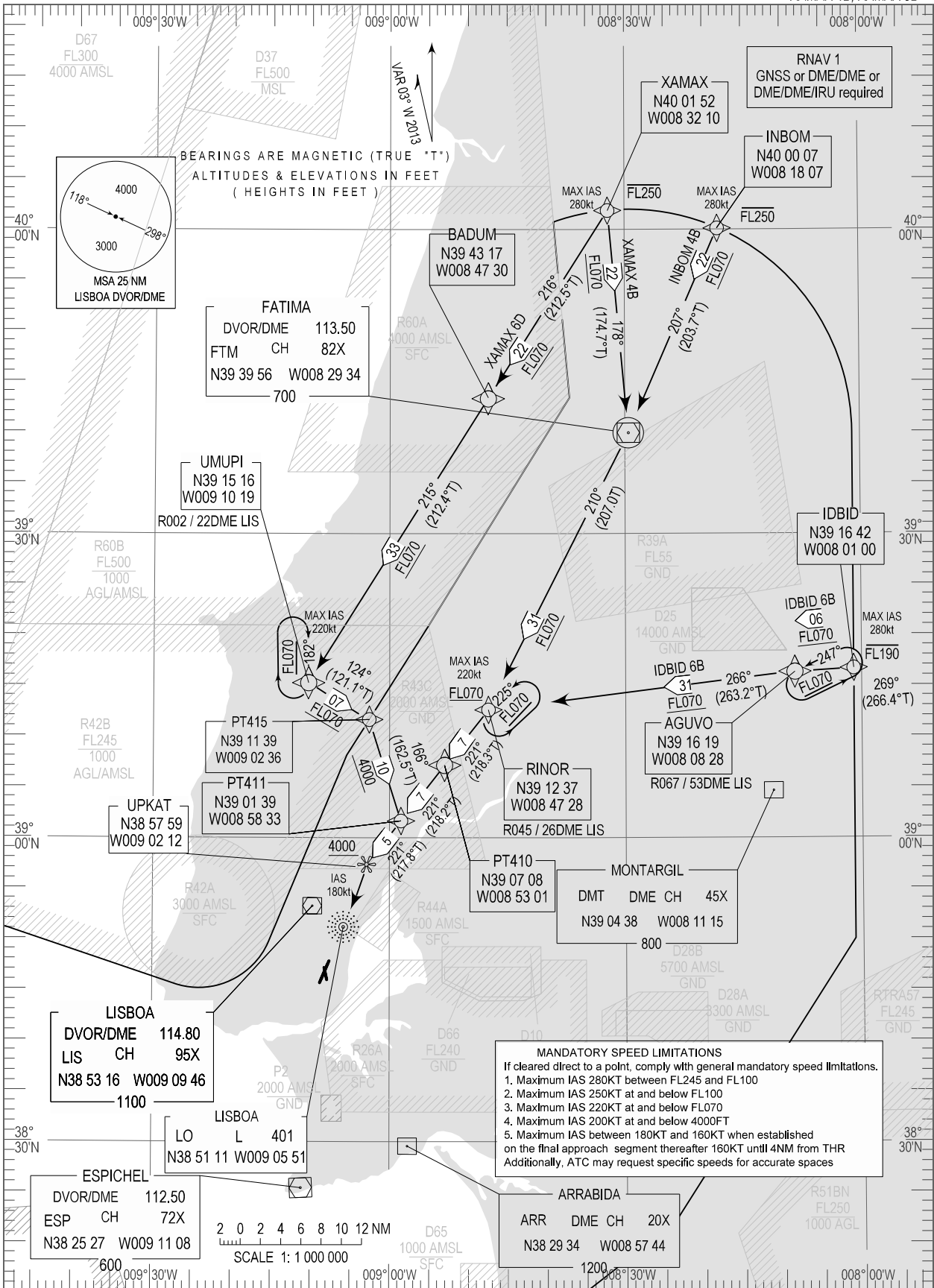


STANDARD ARRIVAL CHART -
INSTRUMENT (STAR) - ICAO

TRANSITION ALTITUDE
4000

TWR 118.100
APP 119.100
ACC 125.125

LISBOA (LPPT)
RNAV RWY 21
IDBID 6B, INBOM 4B
XAMAX 4B, XAMAX 6D



MANDATORY SPEED LIMITATIONS
If cleared direct to a point, comply with general mandatory speed limitations.

1. Maximum IAS 280KT between FL245 and FL100
2. Maximum IAS 250KT at and below FL100
3. Maximum IAS 220KT at and below FL070
4. Maximum IAS 200KT at and below 4000FT
5. Maximum IAS between 180KT and 160KT when established on the final approach segment thereafter 160KT until 4NM from THR. Additionally, ATC may request specific speeds for accurate spaces

RNAV 1 GNSS or DME/DME or DME/DME/IRU required. STAR changed: IDBID6B INBOM4B XAMAX4B XAMAX6D. EXONA3B withdrawn.

STANDARD INSTRUMENT ARRIVAL (STAR) RUNWAY 21										
RNAV 1 – GNSS or DME/DME or DME/DME/IRU										
STAR RNAV 1 IDBIB 6B RWY 21										
Procedure Coding Table										
Path Terminator	Waypoint			Course/Track MAG (True)	Dist NM	Turn Direction	Constraints		Nav Specs	Remarks
	Identifier	Flyover	Coordinates				Level	Speed		
IF	IDBIB	-	391642.00N 0080100.00W	-	-	-	-FL190	280Kt	RNAV 1	Clearance limit: UPKAT
TF	AGUVO	-	391619.32N 0080828.24W	269 (266.4)	5.81	-	+FL070	-	RNAV 1	
TF	RINOR	-	391237.34N 0084727.66W	266 (263.3)	30.52	-	+FL070	220Kt	RNAV 1	
TF	PT410	-	390708.47N 0085300.93W	221 (218.3)	6.98	Left	-	-	RNAV 1	
TF	PT411	-	390139.34N 0085833.34W	221 (218.2)	6.98	-	-	-	RNAV 1	
TF	UPKAT	-	385759.04N 0090212.05W	221 (217.8)	4.64	-	+4000ft	180Kt	RNAV 1	

STAR RNAV 1 INBOM 4B RWY 21

Path Terminator	Waypoint			Course/Track MAG (True)	Dist NM	Turn Direction	Constraints		Nav Specs	Remarks
	Identifier	Flyover	Coordinates				Level	Speed		
IF	INBOM	-	400006.91N 0081807.21W	-	-	-	-FL250	280Kt	RNAV 1	Clearance limit: UPKAT
TF	FTM	Yes	393956.45N 0082933.54W	207 (203.7)	22.00	-	-	-	RNAV 1	
TF	RINOR	-	391237.34N 0084727.66W	210 (207.0)	30.62	-	+FL070	220Kt	RNAV 1	
TF	PT410	-	390708.47N 0085300.93W	221 (218.3)	6.98	Right	-	-	RNAV 1	
TF	PT411	-	390139.34N 0085833.34W	221 (218.2)	6.98	-	-	-	RNAV 1	
TF	UPKAT	-	385759.04N 0090212.05W	221 (217.8)	4.64	-	+4000ft	180Kt	RNAV 1	

STAR RNAV 1 XAMAX 4B RWY 21

Path Terminator	Waypoint			Course/Track MAG (True)	Dist NM	Turn Direction	Constraints		Nav Specs	Remarks
	Identifier	Flyover	Coordinates				Level	Speed		
IF	XAMAX	-	400151.96N 0083210.34W	-	-	-	-FL250	280Kt	RNAV 1	Clearance limit: UPKAT
TF	FTM	Yes	393956.45N 0082933.54W	178 (174.7)	22.00	-	-	-	RNAV 1	
TF	RINOR	-	391237.34N 0084727.66W	210 (207.0)	30.62	Right	+FL070	220Kt	RNAV 1	
TF	PT410	-	390708.47N 0085300.93W	221 (218.3)	6.98	Right	-	-	RNAV 1	
TF	PT411	-	390139.34N 0085833.34W	221 (218.2)	6.98	-	-	-	RNAV 1	
TF	UPKAT	-	385759.04N 0090212.05W	221 (217.8)	4.64	-	+4000ft	180Kt	RNAV 1	

STAR RNAV 1 XAMAX 6D RWY 21

Path Terminator	Waypoint			Course/Track MAG (True)	Dist NM	Turn Direction	Constraints		Nav Specs	Remarks
	Identifier	Flyover	Coordinates				Level	Speed		
IF	XAMAX	-	400151.96N 0083210.34W	-	-	-	-FL250	280Kt	RNAV 1	Clearance limit: UPKAT To be used pending on military conditions.
TF	BADUM	-	394317.16N 0084730.26W	216 (212.5)	22.00	-	-	-	RNAV 1	
TF	UMUPI	-	391516.46N 0091018.55W	215 (212.4)	33.09	-	-	220Kt	RNAV 1	
TF	PT415	-	391139.36N 0090235.77W	124 (121.1)	7.00	Left	+FL070	-	RNAV 1	
TF	PT411	-	390139.34N 0085833.34W	166 (162.5)	10.48	Right	-	-	RNAV 1	
TF	UPKAT	-	385759.04N 0090212.05W	221 (217.8)	4.64	Right	+4000ft	180Kt	RNAV 1	