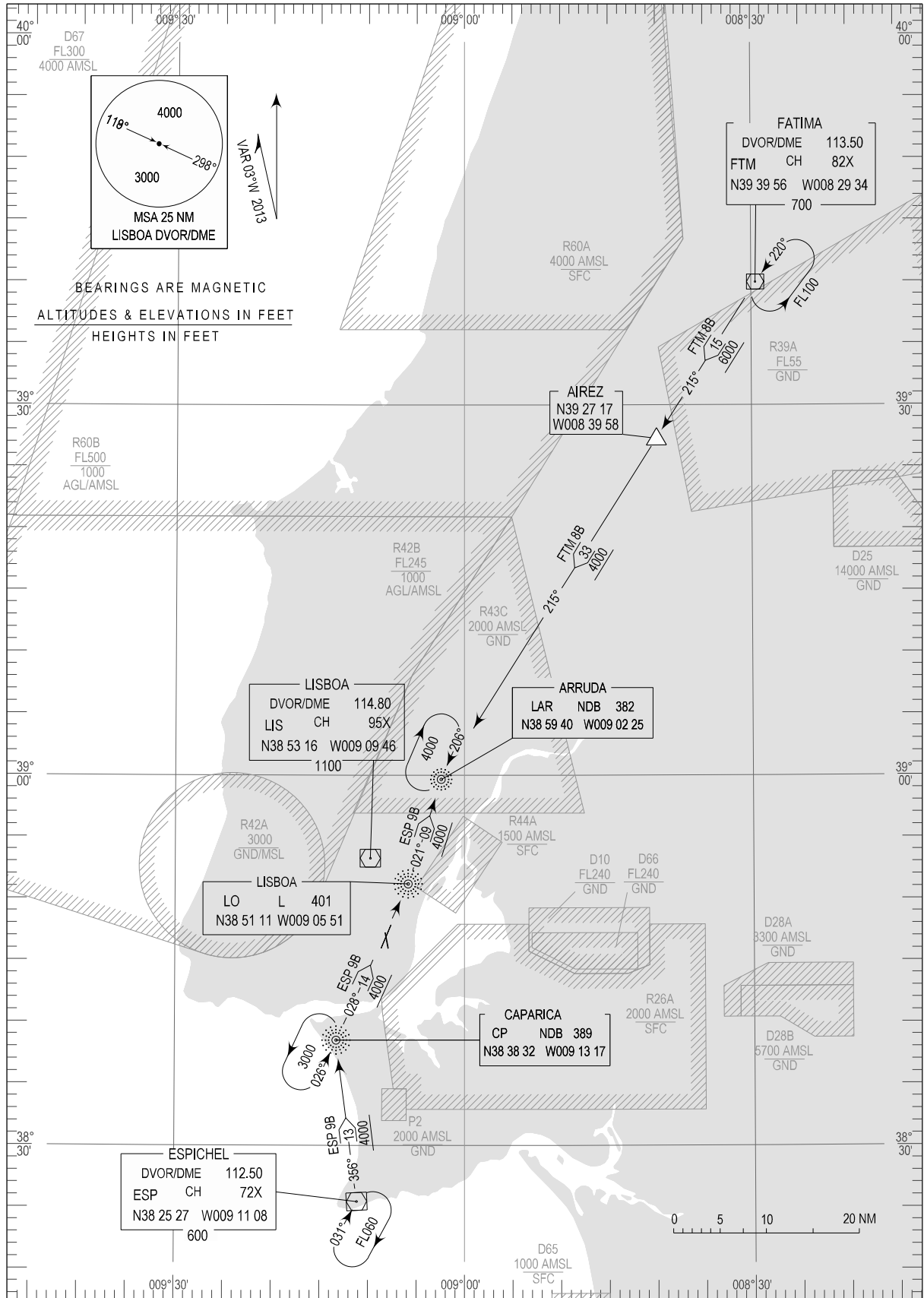


STANDARD ARRIVAL CHART -
INSTRUMENT (STAR) - ICAO

LISBOA (LPPT)
RWY21

TRANSITION ALTITUDE
4000
TWR 118.100
APP 119.100
ACC 125.125

ESP 9B, FTM 8B



ACC FREQ updated

STANDARD INSTRUMENT ARRIVAL (STAR) RWY 21

RUNWAY 21		
Designator	Identification Significant Points	Remarks
ESP9B	Proceed from ESP DVOR/DME - to CP NDB - LO Locator to LAR NDB (Minimum altitude 4000FT)	Clearance Limit: LAR NDB In case of Radar failure clearance limit ESP DVOR/DME may be expected
FTM8B	Proceed from FTM DVOR/DME - to AIREZ (Minimum altitude 6000FT) to LAR NDB (Minimum altitude 4000FT)	Clearance limit: LAR NDB