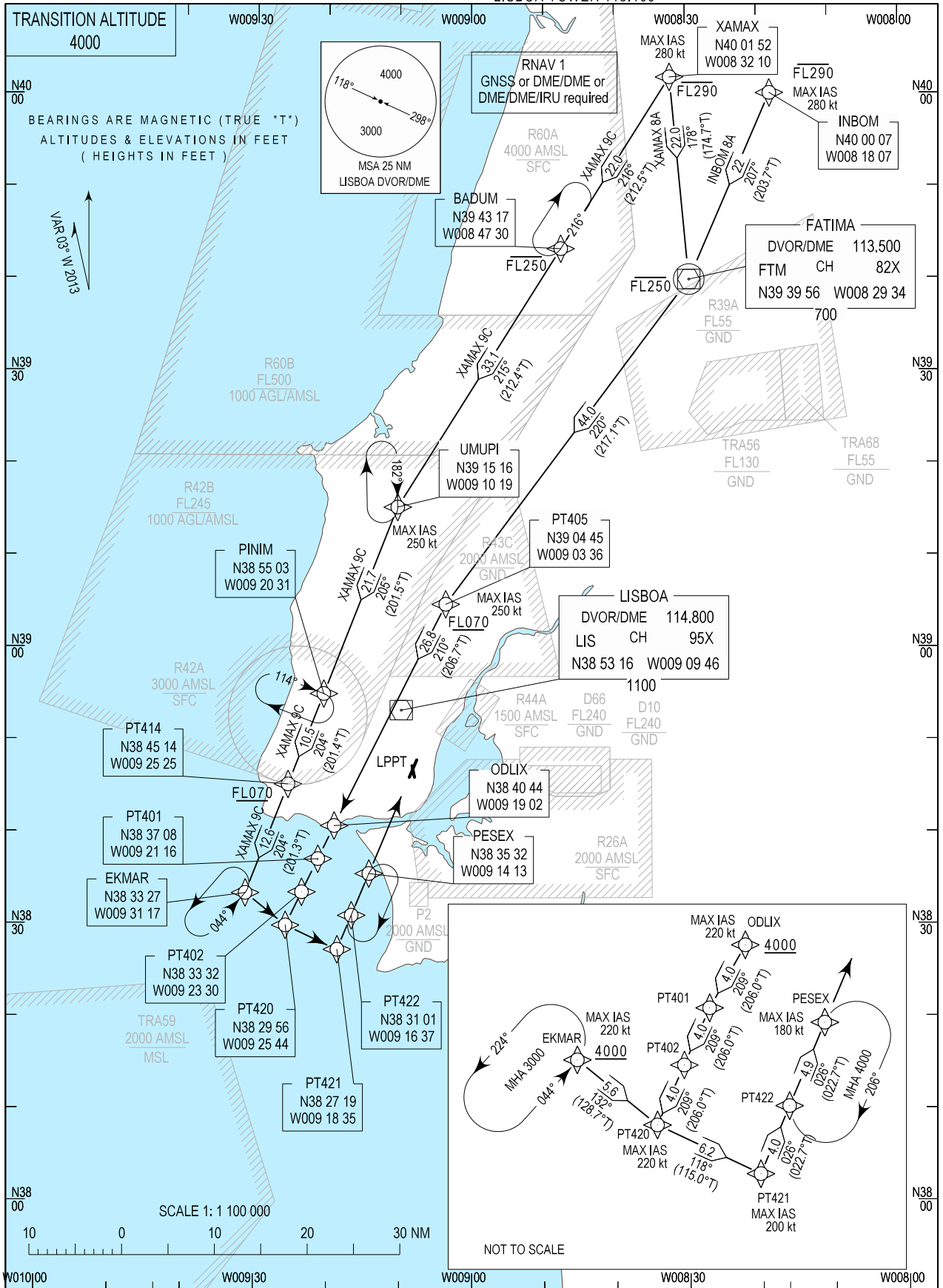


STANDARD ARRIVAL CHART -  
INSTRUMENT (STAR) - ICAO

LISBOA ARR INFORMATION 124.155  
LISBOA CONTROL 123.980  
LISBOA APPROACH 119.105  
LISBOA ARRIVAL 125.130  
LISBOA TOWER 118.105

LISBOA / LPPT  
RNAV RWY 03/35  
INBOM 8A, XAMAX 8A, XAMAX 9C



STANDARD INSTRUMENT ARRIVAL (STAR) RUNWAY 03/35  
RNAV 1 – GNSS or DME/DME or DME/DME/IRU  
Procedure Coding Table

STAR RNAV 1 INBOM 8A RWY 03/35										
Path Terminator	Waypoint			Course/Track MAG (True)	Dist NM	Turn Direction	Constraints		Nav Specs	Remarks
	Identifier	Flyover	Coordinates				Level	Speed		
IF	INBOM	No	400006.9084N 0081807.2063W	-	-	-	- FL290	280Kt	RNAV 1	
TF	FTM	Yes	393956.4527N 0082933.5366W	206.723 (203.673)	22.000	-	- FL250	280Kt	RNAV 1	Clearance limit: PESEX
TF	PT405	No	390444.8357N 0090336.1348W	220.129 (217.079)	43.970	Right	+FL070	250Kt	RNAV 1	
TF	ODLIX	No	384044.1220N 0091901.5023W	209.790 (206.740)	26.842	Left	+4000ft	220Kt	RNAV 1	
TF	PT401	No	383708.2488N 0092115.8332W	209.073 (206.023)	3.999	-	+4000ft	-	RNAV 1	
TF	PT402	No	383332.3345N 0092329.9441W	209.051 (206.001)	3.999	-	+4000ft	-	RNAV 1	
TF	PT420	No	382956.3065N 0092543.8749W	209.028 (205.978)	4.001	-	+4000ft	220Kt	RNAV 1	
TF	PT421	No	382719.2495N 0091835.1898W	118.002 (114.952)	6.190	Left	+4000ft	200Kt	RNAV 1	
TF	PT422	No	383100.9209N 0091637.3373W	025.719 (022.669)	4.000	Left	+4000ft	-	RNAV 1	
TF	PESEX	No	383532.4200N 0091412.6941W	025.739 (022.689)	4.900	-	+4000ft	180Kt	RNAV 1	

STAR RNAV 1 XAMAX 8A RWY 03/35										
Path Terminator	Waypoint			Course/Track MAG (True)	Dist NM	Turn Direction	Constraints		Nav Specs	Remarks
	Identifier	Flyover	Coordinates				Level	Speed		
IF	XAMAX	No	400151.9619N 0083210.3388W	-	-	-	- FL290	280Kt	RNAV 1	
TF	FTM	Yes	393956.4527N 0082933.5366W	177.787 (174.737)	22.000	-	- FL250	280Kt	RNAV 1	Clearance limit: PESEX
TF	PT405	No	390444.8357N 0090336.1348W	220.129 (217.079)	43.970	Right	+FL070	250Kt	RNAV 1	
TF	ODLIX	No	384044.1220N 0091901.5023W	209.790 (206.740)	26.842	Left	+4000ft	220Kt	RNAV 1	
TF	PT401	No	383708.2488N 0092115.8332W	209.073 (206.023)	3.999	-	+4000ft	-	RNAV 1	
TF	PT402	No	383332.3345N 0092329.9441W	209.051 (206.001)	3.999	-	+4000ft	-	RNAV 1	
TF	PT420	No	382956.3065N 0092543.8749W	209.028 (205.978)	4.001	-	+4000ft	220Kt	RNAV 1	
TF	PT421	No	382719.2495N 0091835.1898W	118.002 (114.952)	6.190	Left	+4000ft	200Kt	RNAV 1	
TF	PT422	No	383100.9209N 0091637.3373W	025.719 (022.669)	4.000	Left	+4000ft	-	RNAV 1	
TF	PESEX	No	383532.4200N 0091412.6941W	025.739 (022.689)	4.900	-	+4000ft	180Kt	RNAV 1	

STAR RNAV 1 XAMAX 9C RWY 03/35										
Path Terminator	Waypoint			Course/Track MAG (True)	Dist NM	Turn Direction	Constraints		Nav Specs	Remarks
	Identifier	Flyover	Coordinates				Level	Speed		
IF	XAMAX	No	400151.9619N 0083210.3388W	-	-	-	- FL290	280Kt	RNAV 1	
TF	BADUM	No	394317.1565N 0084730.2615W	215.580 (212.530)	22.000	-	- FL250	280Kt	RNAV 1	Clearance limit: PESEX.  To be used pending on military conditions.
TF	UMUPI	No	391516.4617N 0091018.5515W	215.416 (212.366)	33.091	-	-	250Kt	RNAV 1	
TF	PINIM	No	385502.7041N 0092030.5482W	204.557 (201.507)	21.715	Left	-	-	RNAV 1	
TF	PT414	No	384513.7422N 0092525.2551W	204.449 (201.399)	10.531	-	+FL070	-	RNAV 1	
TF	EKMAR	No	383326.5606N 0093117.1991W	204.398 (201.348)	12.639	-	+4000ft	220Kt	RNAV 1	
TF	PT420	No	382956.3065N 0092543.8749W	131.786 (128.736)	5.591	Left	+4000ft	220Kt	RNAV 1	
TF	PT421	No	382719.2495N 0091835.1898W	118.002 (114.952)	6.190	Left	+4000ft	200Kt	RNAV 1	
TF	PT422	No	383100.9209N 0091637.3373W	025.719 (022.669)	4.000	Left	+4000ft	-	RNAV 1	
TF	PESEX	No	383532.4200N 0091412.6941W	025.739 (022.689)	4.900	-	+4000ft	180Kt	RNAV 1	