

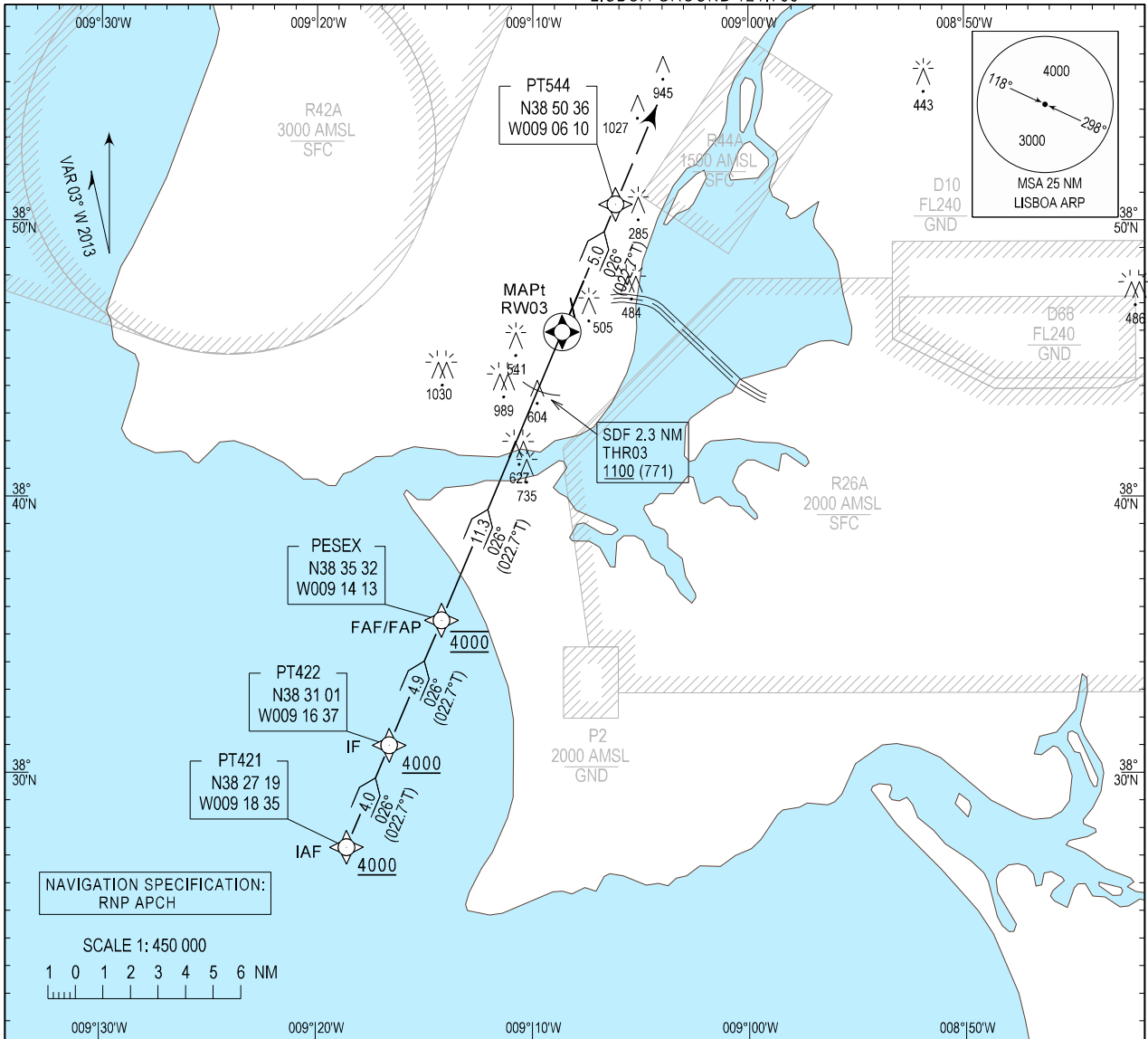
INSTRUMENT APPROACH CHART - ICAO

AD ELEV 374 ft
HEIGHTS RELATED
THR RWY 03 - ELEV 329 ft

LISBOA ARR INFORMATION 124.155
LISBOA APPROACH 119.105
LISBOA ARRIVAL 125.130
LISBOA TOWER 118.105
LISBOA GROUND 121.755

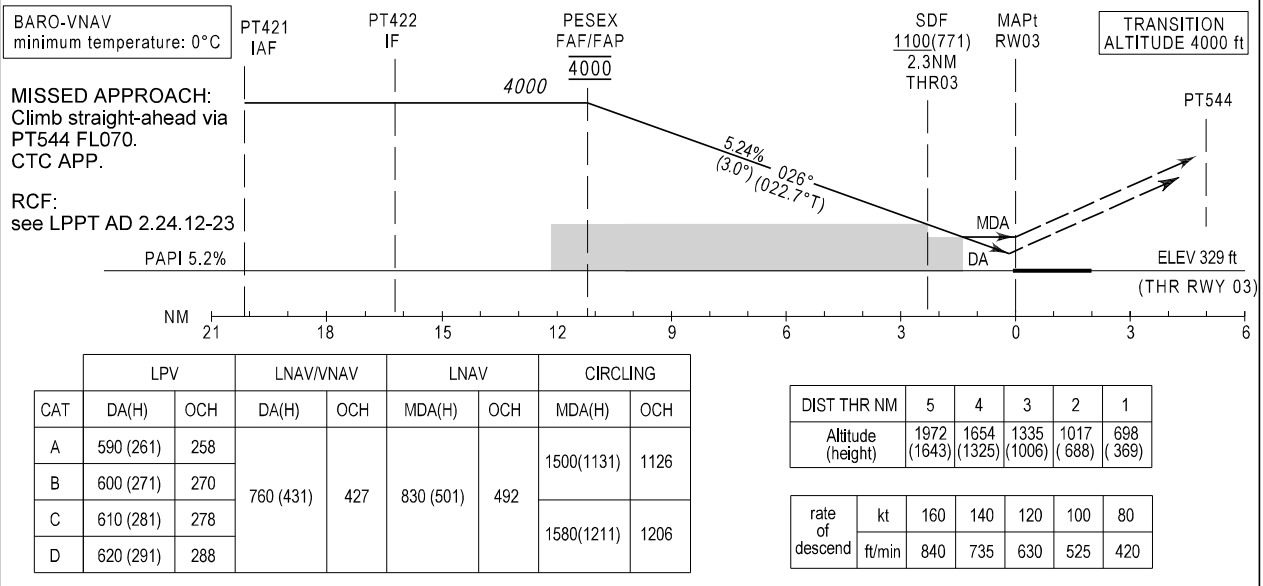
EGNOS
CH 48477
E03A
RDH: 50

LISBOA / LPPT
RNAV (GNSS) RWY03



NAVIGATION SPECIFICATION:
RNP APCH

SCALE 1: 450 000



Missed approach text changed.

Instrument Approach Procedure Coding Table
Lisboa RNAV (GNSS) RWY 03

Path Terminator	Waypoint				Course/Track MAG (True)	Dist NM	Turn Direction	Altitude	Speed	RNP Value NM	Navigation Specification	Remarks
	Identifier	Type	Flyover	Coordinates								
IF	PT421	IAF	N	382719.25N 0091835.19W	-	-	-	+4000FT	-	1.0	RNP APCH	-
TF	PT422	IF	N	383100.92N 0091637.34W	026 (022.7)	4.00	-	+4000FT	-	1.0	RNP APCH	
TF	PESEX	FAF/FAP	N	383532.42N 0091412.69W	026 (022.7)	4.90	-	@4000FT	-	0.3	RNP APCH	
TF	RW03	MAPt (LNAV only)	Y	384559.15N 0090838.04W	026 (022.7)	11.3	-	-	-	1.0	RNP APCH	
TF	PT544	-	N	385036.16N 0090609.86W	026 (022.7)	5.00	-	-	-	1.0	RNP APCH	-
VM		-	N		026 (022.7)	-	-	@FL070	-	1.0	RNP APCH	

Input data

Operation Type	0
SBAS Provider	1
Airport Identifier	LPPT
Runway	03
Runway Direction	0
Approach Performance Designator	0
Route Indicator	
Reference Path Data Selector	0
Reference Path Identifier	E03A
LTP/FTP Latitude	384559.1500N
LTP/FTP Longitude	0090838.0400W
LTP/FTP Ellipsoidal Height (metres)	153.7
FPAP Latitude	384750.3000N
Delta FPAP Latitude (seconds)	111.1500
FPAP Longitude	0090738.5700W
Delta FPAP Longitude (seconds)	59.4700
Threshold Crossing Height	50.0
TCH Units Selector	0
Glidepath Angle (degrees)	3.00
Course Width (metres)	105.00
Length Offset (metres)	0
HAL (metres)	40.0
VAL (metres)	50.0

Output data

Data Block	10 14 10 10 0C 03 00 00 01 33
	30 05 DC 01 A3 10 D0 6B 13 FC
	01 1A 5C 64 03 9C D0 01 F4 01
	2C 01 64 00 C8 FA 7F EC F0 F2
Calculated CRC Value	7FECF0F2

Required Additional Data

ICAO Code	LP
LTP/FTP Orthometric Height (metres)	100.3
FPAP Orthometric Height (metres)	105.7