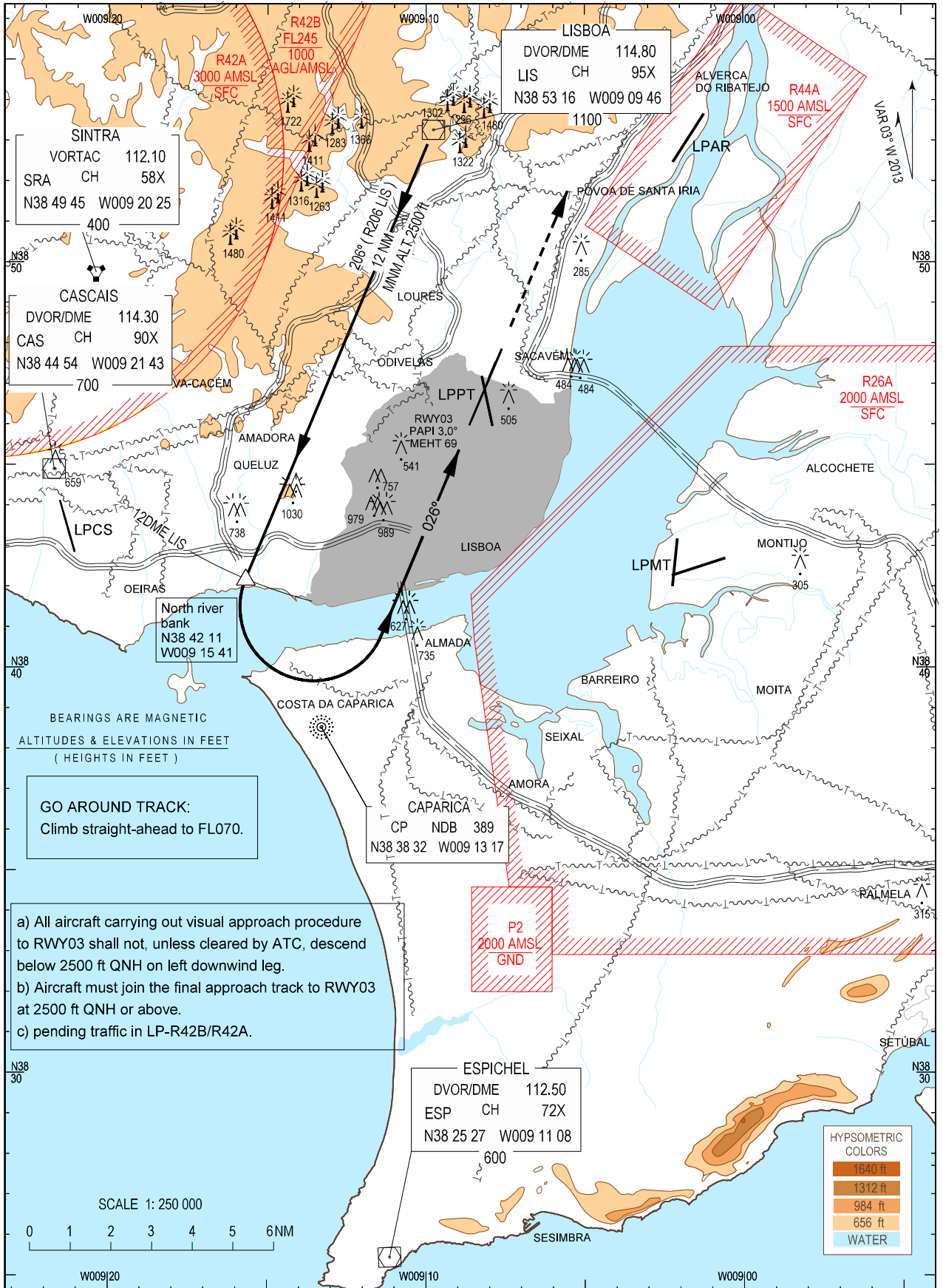


**VISUAL
APPROACH
PROCEDURE**

AD ELEV 374 ft
HEIGHTS RELATED
TO AD ELEV

ATIS 124.150
APP 119.100
TWR 118.100

LISBOA
LPPT RWY03



SINTRA
VORTAC 112.10
SRA CH 58X
N38 49 45 W009 20 25
400

CASCAIS
DVOR/DME 114.30
CAS CH 90X
N38 44 54 W009 21 43
700

LISBOA
DVOR/DME 114.80
LIS CH 95X
N38 53 16 W009 09 46
1100

LPPT
RWY03
PAPI 3.0°
MEHT 69
541

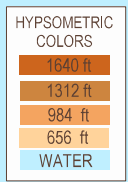
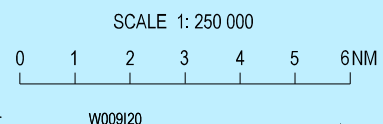
CAPARICA
CP NDB 389
N38 38 32 W009 13 17

ESPICHEL
DVOR/DME 112.50
ESP CH 72X
N38 25 27 W009 11 08
600

BEARINGS ARE MAGNETIC
ALTITUDES & ELEVATIONS IN FEET
(HEIGHTS IN FEET)

GO AROUND TRACK:
Climb straight-ahead to FL070.

- a) All aircraft carrying out visual approach procedure to RWY03 shall not, unless cleared by ATC, descend below 2500 ft QNH on left downwind leg.
- b) Aircraft must join the final approach track to RWY03 at 2500 ft QNH or above.
- c) pending traffic in LP-R42B/R42A.



CTC APP removed from GO AROUND TRACK.