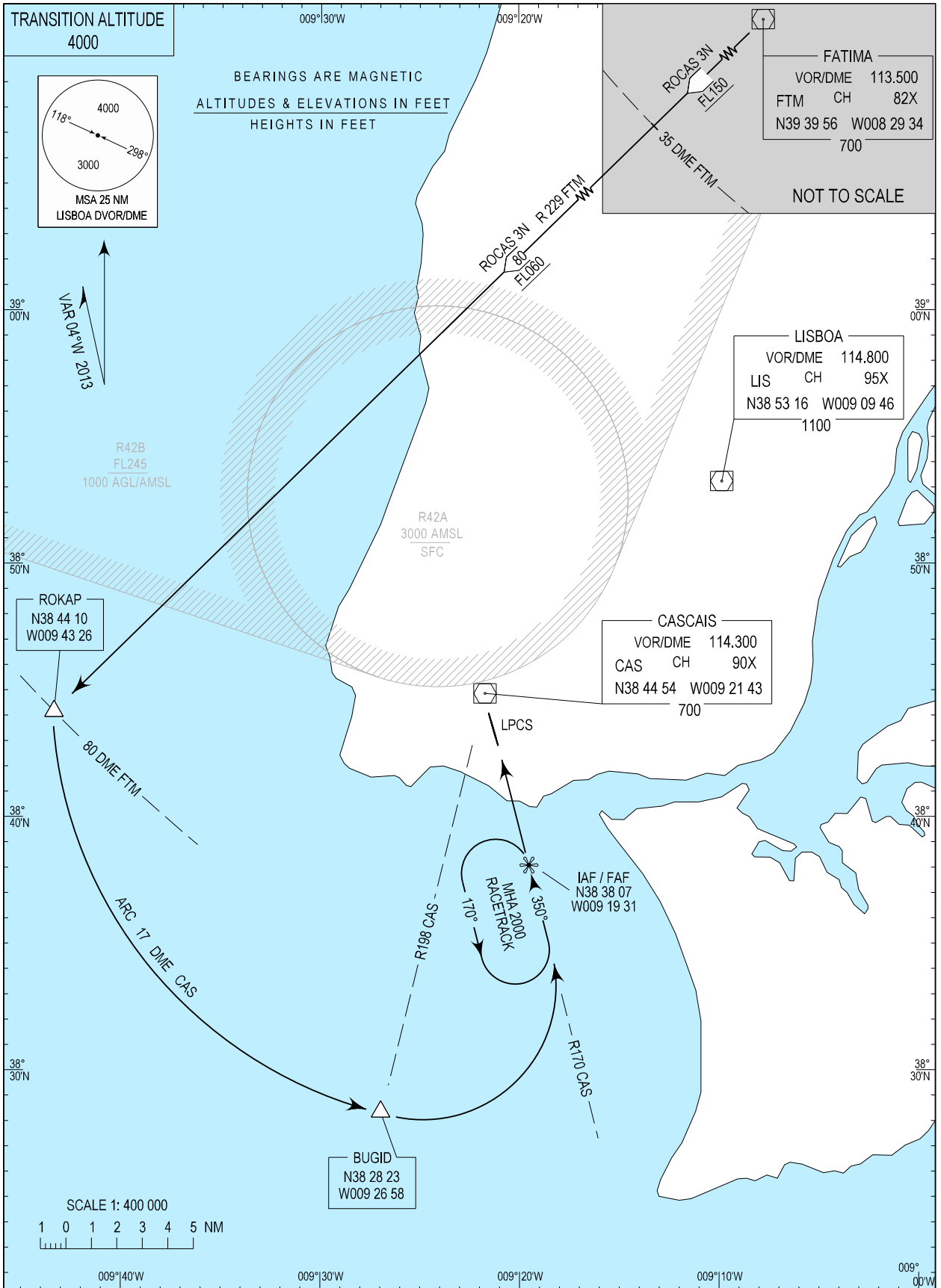


STANDARD ARRIVAL CHART -
INSTRUMENT (STAR) - ICAO

LISBOA APPROACH 119.105
CASCAIS TOWER 120.305

CASCAIS / LPCS
RWY 35
ROCAS 3N



New CS and FREQ.

STANDARD INSTRUMENT ARRIVAL (STAR) RWY 35

RUNWAY 35		
Designator	Route	Remarks
ROCAS3N	At FTM DVOR/DME intercept RDL229, not below FL150 until DME35. At ROKAP (FTM DME80), not below FL 060 turn left and proceed on CAS DVOR/DME ARC 17 descending to 2000 FT, to reach prior crossing RDL198 CAS DVOR/DME, (BUGID). At BUGID maintaining 2000 FT, turn left to intercept RDL170 CAS DVOR/DME. Proceed to IAF/FAF.	Pending on Military Traffic Conditions