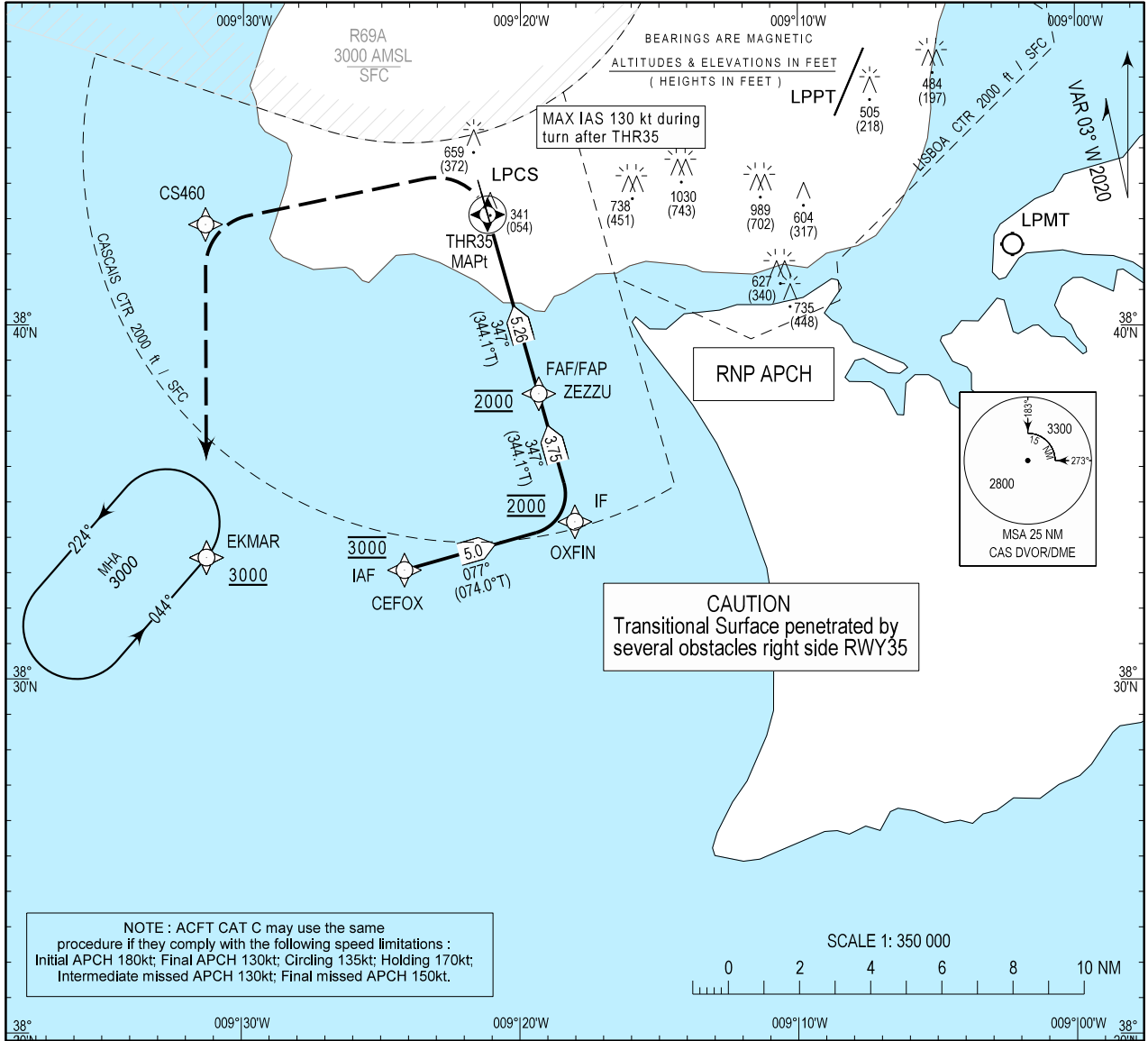


INSTRUMENT APPROACH CHART - ICAO
AD ELEV 326 ft
HEIGHTS RELATED THR RWY 35 - ELEV 287 ft

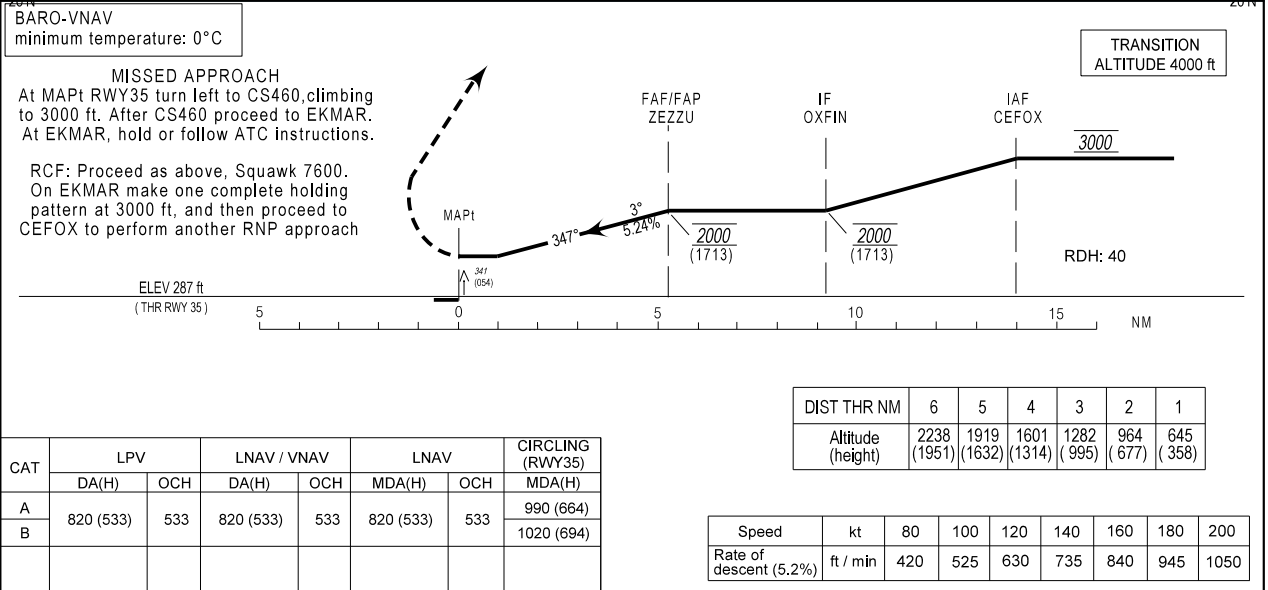
LISBOA APPROACH 119.105
CASCAIS TOWER 120.305
CASCAIS GROUND 121.830

EGNOS
CH 72329
E35A
RDH: 40

CASCAIS/LPCS
RNP RWY35
CAT A-B



NOTE : ACFT CAT C may use the same procedure if they comply with the following speed limitations :
Initial APCH 180kt; Final APCH 130kt; Circling 135kt; Holding 170kt;
Intermediate missed APCH 130kt; Final missed APCH 150kt.



New RNP procedure.

Instrument Approach Procedure Coding Table

LPCS RNP RWY35 A/B

Path Terminator	Waypoint				Course/Track MAG (True)	Dist NM	Turn Direction	Constraints		Navigation Specification	Remarks
	Identifier	Type	Flyover	Coordinates				Level	Speed		
IF	CEFOX	IAF	N	383305.95N 0092409.73W	-	-	-	@3000FT	-	RNP APCH	-
TF	OXFIN	IF	N	383428.36N 0091801.77W	077 (074.0)	5.00	Left	@2000FT	-	RNP APCH	
TF	ZEZU	FAF/FAP	N	383804.84N 0091920.33W	347 (344.1)	3.75	-	@2000FT	-	RNP APCH	
TF	RW35	MAPT	Y	384308.41N 0092110.74W	347 (344.1)	5.26	-	-	-	RNP APCH	
DF	CS460	-	N	384250.96N 0093121.09W	-	-	Left	-	130KT	RNP APCH	
TF	EKMAR	-	N	383326.56N 0093117.20W	183 (179.7)	9.40	-	+3000FT	-	RNP APCH	