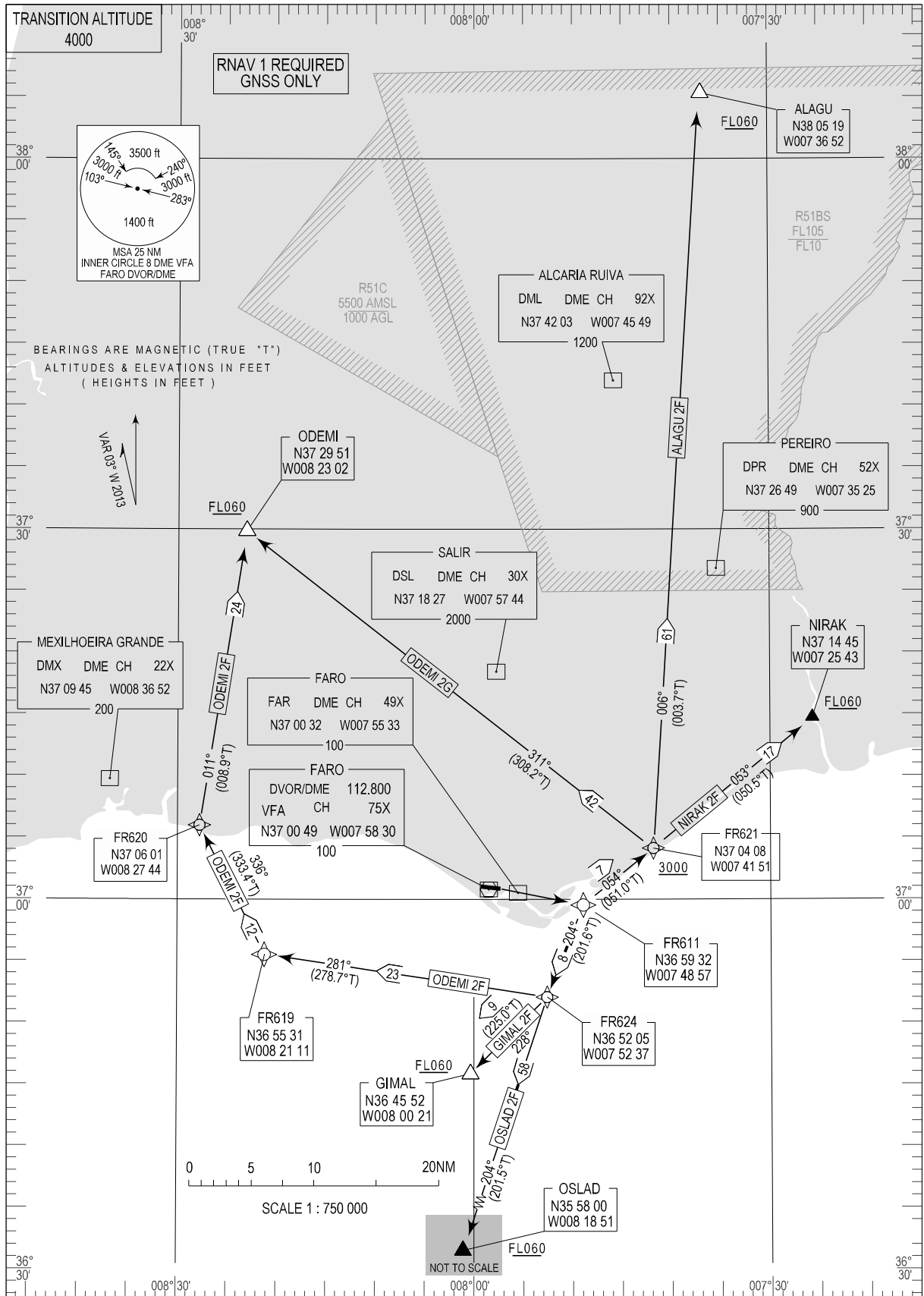


STANDARD DEPARTURE CHART - INSTRUMENT (SID) - ICAO

FARO INFORMATION 124.205
FARO TOWER 120.755
FARO APPROACH 119.405
LISBOA CONTROL 125.550

FARO / LPFR RNAV RWY 10

ALAGU 2F, GIMAL 2F, NIRAK 2F
ODEMI 2F, ODEMI 2G, OSLAD 2F



STANDARD INSTRUMENT DEPARTURE (SID) RWY 10

RNAV 1 - GNSS ONLY

Procedure Coding Table

Path Terminator	Waypoint			Course/Track MAG (True)	Dist NM	Turn Direction	Constraints		Navigation Specification	Remarks
	Identifier	Flyover	Coordinates				Level	Speed		
Faro SID - ALAGU 2F										
CF	FR611	No	365932.20N 0074856.90W	103 (100.1)	-	-	-	-	RNAV 1	
TF	FR621	No	370408.29N 0074150.96W	054 (051.0)	7.31	Left	+3000FT	-		
TF	ALAGU	No	380519.34N 0073652.27W	006 (003.7)	61.24	Left	+FL060	-		
Faro SID - NIRAK 2F										
CF	FR611	No	365932.20N 0074856.90W	103 (100.1)	-	-	-	-	RNAV 1	
TF	FR621	No	370408.29N 0074150.96W	054 (051.0)	7.31	Left	+3000FT	-		
TF	NIRAK	No	371445.00N 0072543.00W	053 (050.5)	16.69	-	+FL060	-		
Faro SID - ODEMI 2F										
CF	FR611	No	365932.20N 0074856.90W	103 (100.1)	-	-	-	-	RNAV 1	
TF	FR624	No	365205.19N 0075236.86W	204 (201.6)	8.00	Right	-	-		
TF	FR619	No	365531.42N 0082111.34W	281 (278.7)	23.18	Right	-	-		
TF	FR620	No	370600.88N 0082744.37W	336 (333.4)	11.72	Right	-	-		
TF	ODEMI	No	372951.02N 0082302.44W	011 (008.9)	24.10	Right	+FL060	-		
Faro SID - ODEMI 2G										
CF	FR611	No	365932.20N 0074856.90W	103 (100.1)	-	-	-	-	RNAV 1	
TF	FR621	No	370408.29N 0074150.96W	054 (051.0)	7.31	Left	+3000FT	-		
TF	ODEMI	No	372951.02N 0082302.44W	311 (308.2)	41.72	Left	+FL060	-		
Faro SID - OSLAD 2F										
CF	FR611	No	365932.20N 0074856.90W	103 (100.1)	-	-	-	-	RNAV 1	
TF	FR624	No	365205.19N 0075236.86W	204 (201.6)	8.00	Right	-	-		
TF	OSLAD	No	355800.00N 0081851.00W	204 (201.5)	58.01	-	+FL060	-		
Faro SID - GIMAL 2F										
CF	FR611	No	365932.20N 0074856.90W	103 (100.1)	-	-	-	-	RNAV 1	
TF	FR624	No	365205.19N 0075236.86W	204 (201.6)	8.00	Right	-	-		
TF	GIMAL	No	364552.01N 0080021.09W	228 (225.0)	8.79	Right	+FL060	-		