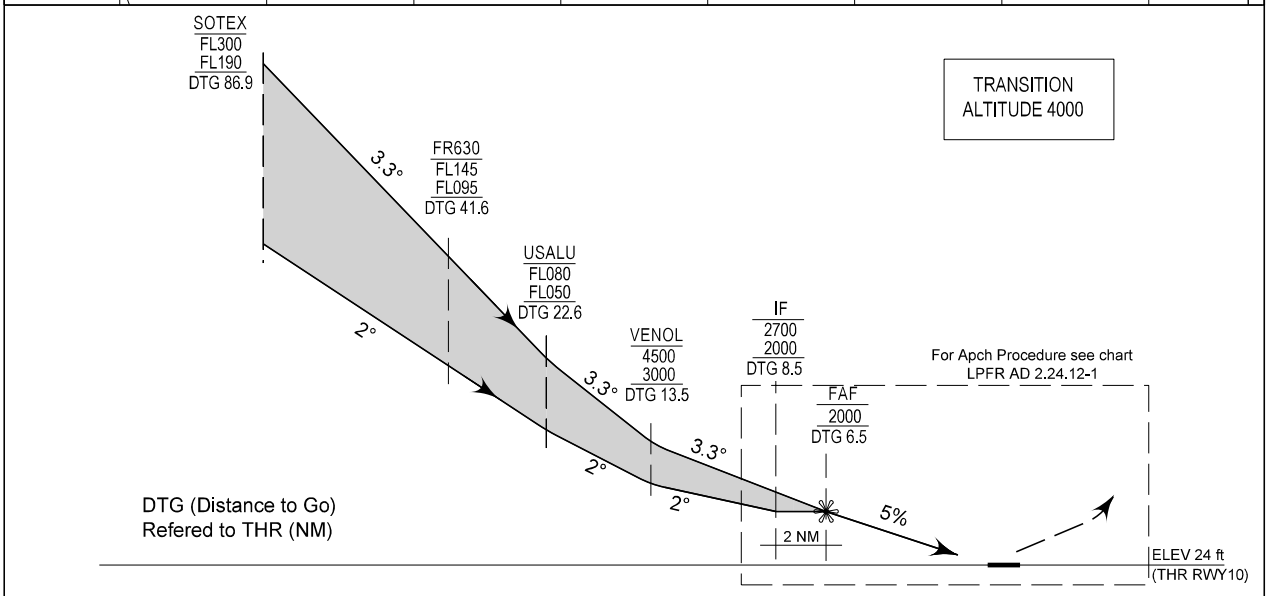
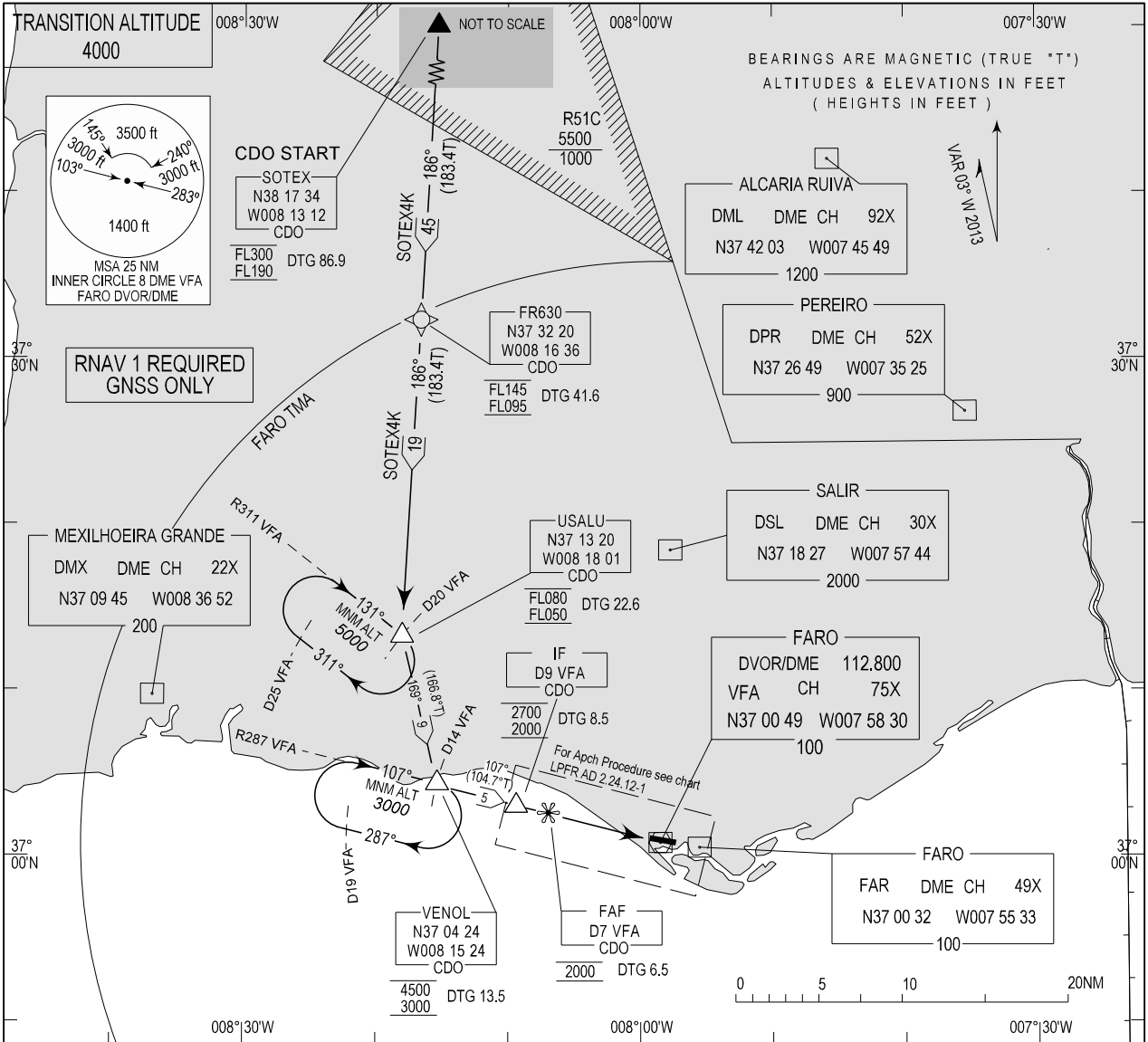


STANDARD ARRIVAL CHART -  
INSTRUMENT (STAR)

FARO INFORMATION 124.205  
FARO APPROACH 119.405  
FARO TOWER 120.755

FARO / LPFR  
RNAV CDO RWY 10  
SOTEX 4K



New CS and FREQ.

STANDARD INSTRUMENT ARRIVAL (STAR) CDO RUNWAY 10										
RNAV 1 – GNSS ONLY										
STAR RNAV 1 CDO SOTEX 4K RWY10										
Path Terminator	Waypoint			Course/ Track MAG (True)	Dist NM	Turn Direction	Constraints		Navigation Specification	Remarks
	Identifier	Flyover	Coordinates				Level	Speed		
IF	SOTEX	-	381733.76N 0081311.58W	-	-	-	FL300 <u>FL190</u>	-	RNAV 1	Clearance limit: VENOL. CDO start: SOTEX. (Pending on military traffic conditions).
TF	FR630	-	373219.98N 0081636.49W	186 (183.4)	45,26	-	FL145 <u>FL095</u>	-	RNAV 1	
TF	USALU	-	371319.60N 0081801.25W	186 (183.4)	19,02	-	FL080 <u>FL050</u>	-	RNAV 1	
TF	VENOL	-	370423.82N 0081524.36W	169 (166.8)	9,16	Left	A4500 <u>A3000</u>	-	RNAV 1	