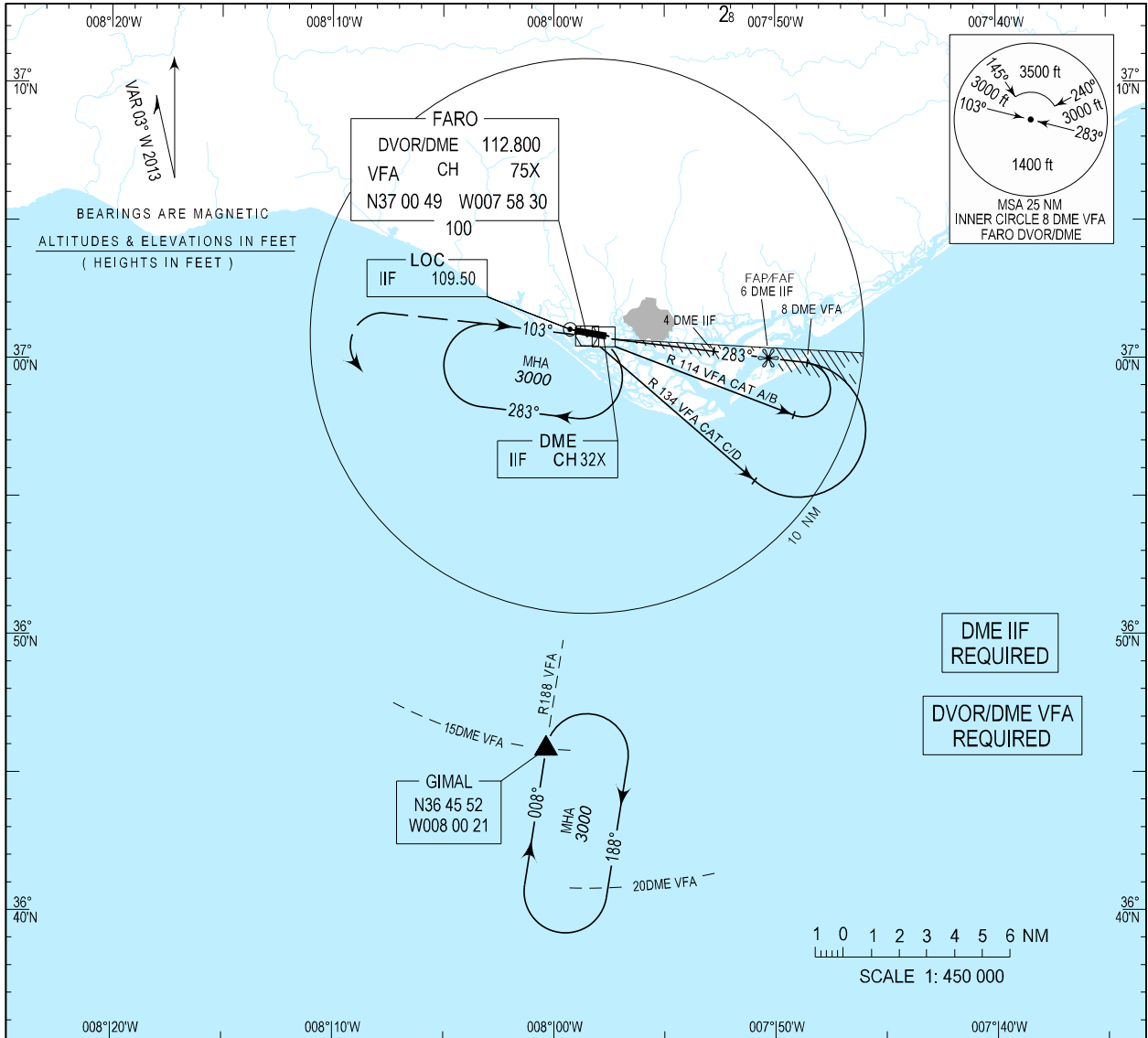


INSTRUMENT
APPROACH
CHART - ICAO

AD ELEV 24 ft
HEIGHTS RELATED
THR RWY 28 - ELEV 18 ft

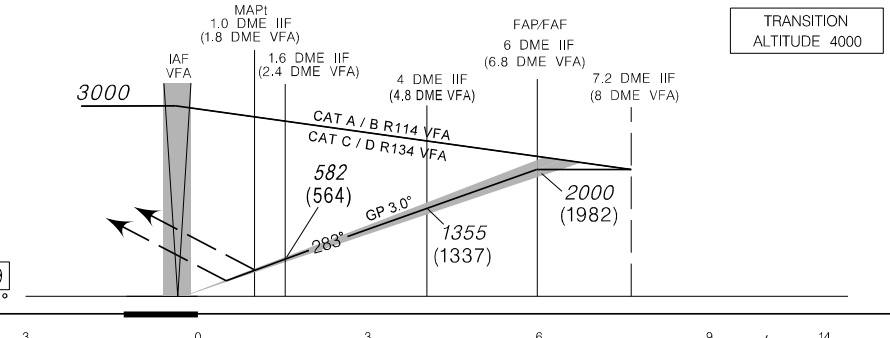
FARO INFORMATION 124.205
FARO APPROACH 119.405
FARO TOWER 120.755
FARO GROUND 118.580

FARO / LPFR
ILS or LOC -Y
RWY 28



MISSED APPROACH
Climb straight ahead to 3000 ft, when passing 2000 ft turn left to GIMAL holding. CTC APP

RCF: squawk 7600. Proceed as above. On GIMAL holding make one complete holding pattern at 3000 ft. Then proceed to DVOR/DME VFA on RDL 188 to perform another ILS approach.



CAT	ILS CAT I		ILS CAT II		LOC		CIRCLING	
	DA(H)	OCH	DA(H)	OCH	MDA(H)	OCH	NORTH	SOUTH
A	218 (200)	200	118 (100)	100	390 (372)	372	NOT AUTHORIZED	570 (546)
B	218 (200)	200	118 (100)	100	390 (372)	372	NOT AUTHORIZED	570 (546)
C	218 (200)	200	118 (100)	100	390 (372)	372	NOT AUTHORIZED	620 (596)
D	218 (200)	200	118 (100)	100	390 (372)	372	NOT AUTHORIZED	620 (596)

DME IIF READING REFERS TO THR RWY28							
LOC 5.2%							
DME IIF	8	7	6	5	4	3	2
ALTITUDE (HEIGHT)	2670 (2652)	2340 (2322)	2010 (1992)	1680 (1662)	1355 (1337)	1040 (1022)	725 (707)
DME VFA	8.8	7.8	6.8	5.8	4.8	3.8	2.8

New CS and FREQ.