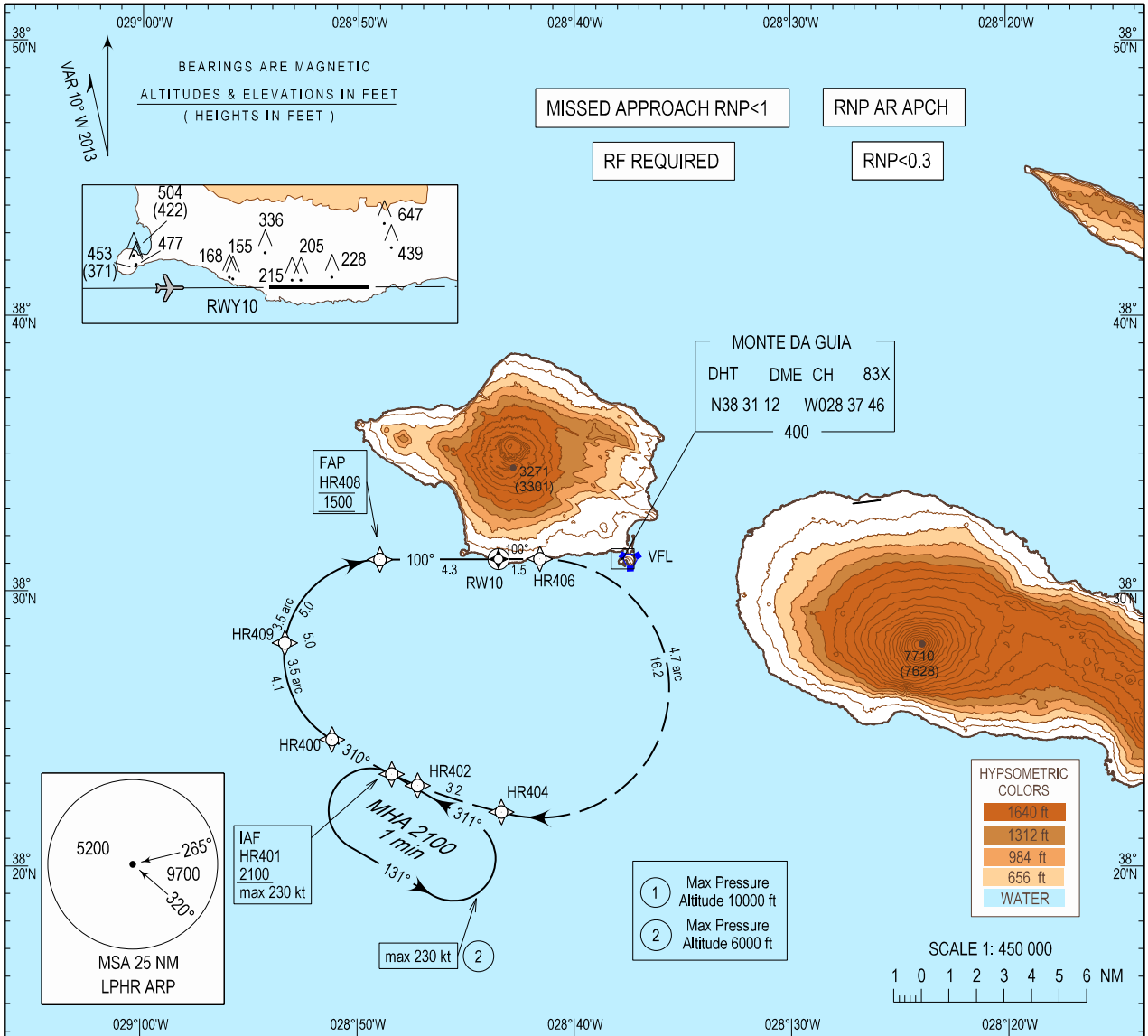


INSTRUMENT  
APPROACH  
CHART - ICAO

AD ELEV 118 ft  
HEIGHTS RELATED  
THR RWY 10 - ELEV 82 ft

ACC 132.150  
APP 120.600  
TWR 118.000

HORTA / LPHR  
RNP X RWY10 (AR)



**MISSED APPROACH**  
Climb to 2100 ft via RNP AR missed approach track HR406-HR404-HR402 to HR401.  
At HR401, hold or start a new approach via HR401 or follow ATC instructions.  
**Note:**RNP 0.3 required from HR406 until HR401

RCF: Squawk 7600.  
Proceed as above.  
On HR401 make one complete holding pattern at 2100 ft and then proceed to perform RNP X RWY10 approach procedure.

**BARO-VNAV MINIMUM TEMPERATURE : +5.0°C**

TA: 5000

700 (618)

4.3

4.3

RDH:50

	CAT A		CAT B		CAT C	
	DA(H)	OCH	DA(H)	OCH	DA(H)	OCH
③ RNP 0.3	640(558)	552	650(568)	564	660(578)	572
④ RNP 0.2	640(558)	552	650(568)	564	660(578)	572
⑤ RNP 0.1	590(508)	501	600(518)	513	610(528)	521

③ RNP 0.3 is required until HR406  
④ RNP 0.2 is required until HR406  
⑤ RNP 0.1 is required until HR406

New DME DHT. New text boxes. New chart IDENT.

Instrument Approach Procedure Coding Table										
Horta RNP X RWY 10 (AR)										
Path Terminator	Waypoint				Course/Track MAG (True)	Dist NM	Turn Direction	ARC Centre Waypoint		ARC Radius NM
	Identifier	Type	Flyover	Coordinates				Identifier	Coordinates	
IF	HR401	IAF	-	382322.72N 0284825.50W	-	-	-	-	-	-
TF	HR400	-	-	382437.83N 0285110.72W	310 (300.0)	2.5	-	-	-	-
RF	HR409	IF	-	382808.29N 0285321.97W	-	4.1	R	HRC09	382739.85N 0284857.06W	3.5
RF	HR408	FAP	-	383110.06N 0284858.69W	-	5.0	R	HRC09	382739.85N 0284857.06W	3.5
TF	RW10	MAPT	Y	383111.51N 0284330.27W	100 (089.7)	4.3	-	-	-	-
TF	HR406	-	-	383111.96N 0284135.61W	100 (089.7)	1.5	-	-	-	-
RF	HR404	-	-	382200.43N 0284321.71W	-	16.2	R	HRC06	382629.67N 0284133.89W	4.7
TF	HR402	-	-	382257.85N 0284713.60W	298 (287.5)	3.2	-	-	-	-
RF	HR401	-	-	382322.72N 0284825.50W	-	1.0	R	HRC17	382727.15N 0284526.00W	4.7
HM	HR401	-	-	382322.72N 0284825.50W	-	-	L	-	-	-

Waypoint Identifier	Altitude	Speed	RNP Value NM	Navigation Specification	Remarks
HR401	+2100	230 KT	0.3	RNP AR APCH	-
HR400	+1500	-	0.3	RNP AR APCH	-
HR409	+1500	-	0.3	RNP AR APCH	-
HR408	@1500	-	0.3/0.2/0.1	RNP AR APCH	-
RW10	-	-	0.3/0.2/0.1	RNP AR APCH	-
HR406	-	-	0.3/0.2/0.1	RNP AR APCH	-
HR404	-	-	0.3	RNP AR APCH	-
HR402	-	-	0.3	RNP AR APCH	-
HR401	+2100	230 KT	0.3	RNP AR APCH	-
HR401	+2100	230 KT	0.3	RNP AR APCH	-

Horta RNAV Holdings							
HLDG ID	INBD TRACK		Turn direction	max IAS ( kt )	MNM HLDG ALT FL/ft (MSL)	TIME (MIN) or DIST OUBD	Controlling Unit
	MAG	(TRUE)					
HR401	311 (300.1)		L	230	2100 ft	1 min	Horta TWR