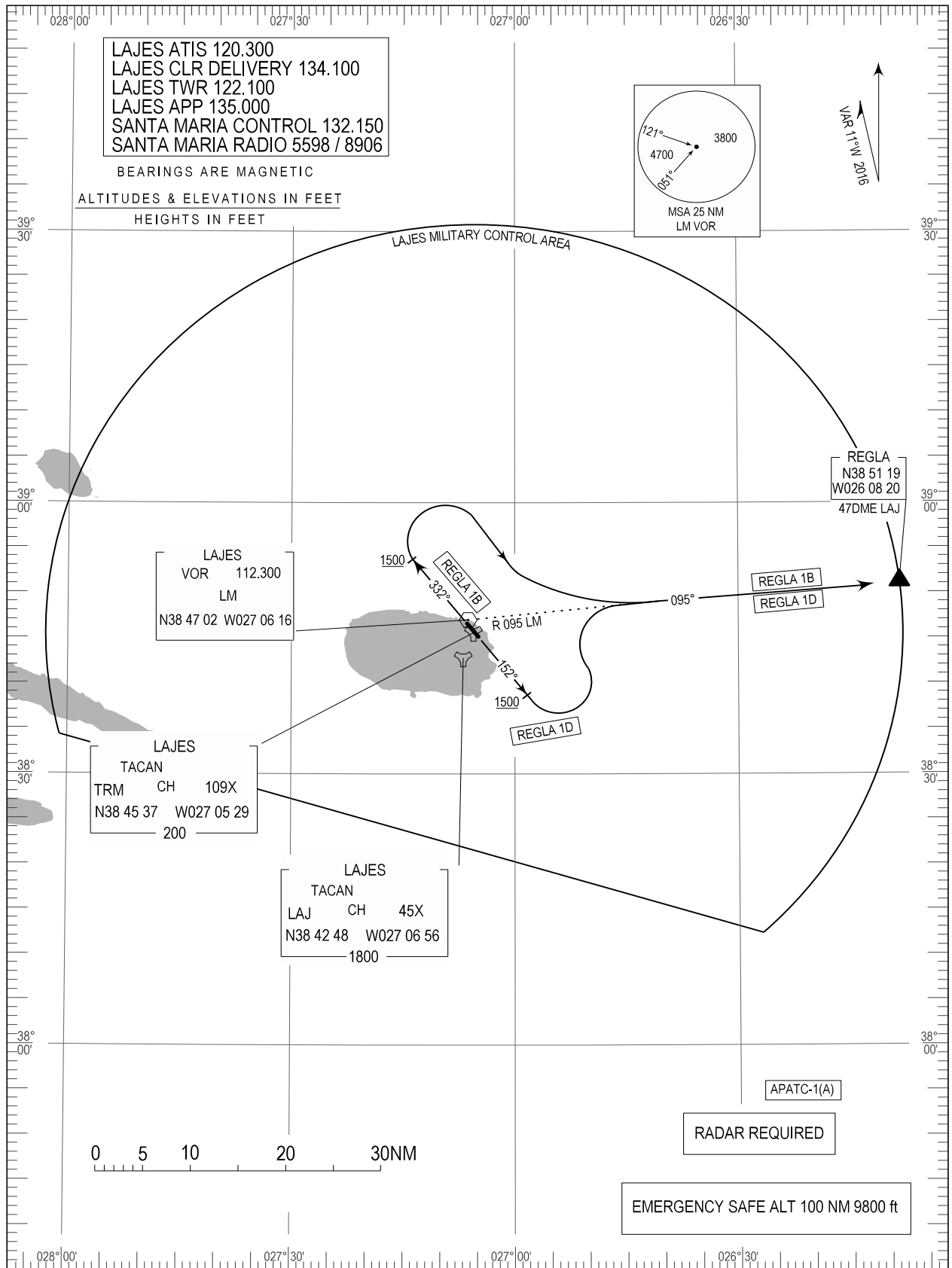


STANDARD DEPARTURE CHART -  
INSTRUMENT (SID) - ICAO

TRANSITION ALTITUDE  
5000

LAJES ( LPLA )  
LM VOR RWY 15/33  
REGLA 1B, REGLA 1D



MSA changed.

**STANDARD INSTRUMENT DEPARTURE (SID) RWY 15/33 LM VOR**

RUNWAY 33				
Designator	Route	After Take-off		Remarks
		Climb to ALT / FL	Contact	
REGLA1B	Climb on 332 DEG Track to 1500FT, Turn right, intercept LM RDL095 to REGLA (RDL095 LM VOR / 47DME LAJ)			<b>RADAR REQUIRED</b>  <b>CAUTION</b> Rising terrain both sides of departure courses requires close adherence to the departure track to assure obstruction clearance

Minimum Climb rate until passing 4700FT							
Runway	Knots	60	120	180	240	300	360
33	Vertical velocity (Feet per minute)	270	540	810	1080	1350	1620

RUNWAY 15				
Designator	Route	After Take-off		Remarks
		Climb to ALT / FL	Contact	
REGLA1D	Climb on 152 DEG Track to 1500FT, Turn left, intercept LM RDL095 to REGLA (RDL095 LM VOR / 47DME LAJ)			<b>RADAR REQUIRED</b>  <b>CAUTION</b> Rising terrain both sides of departure courses requires close adherence to the departure track to assure obstruction clearance  <b>NOTE</b> Cross departure end RWY 15, at least, 25FT AGL or 205FT MSL

Minimum Climb rate until passing 4700FT							
Runway	Knots	60	120	180	240	300	360
15	Vertical velocity (Feet per minute)	320	640	960	1280	1600	1920