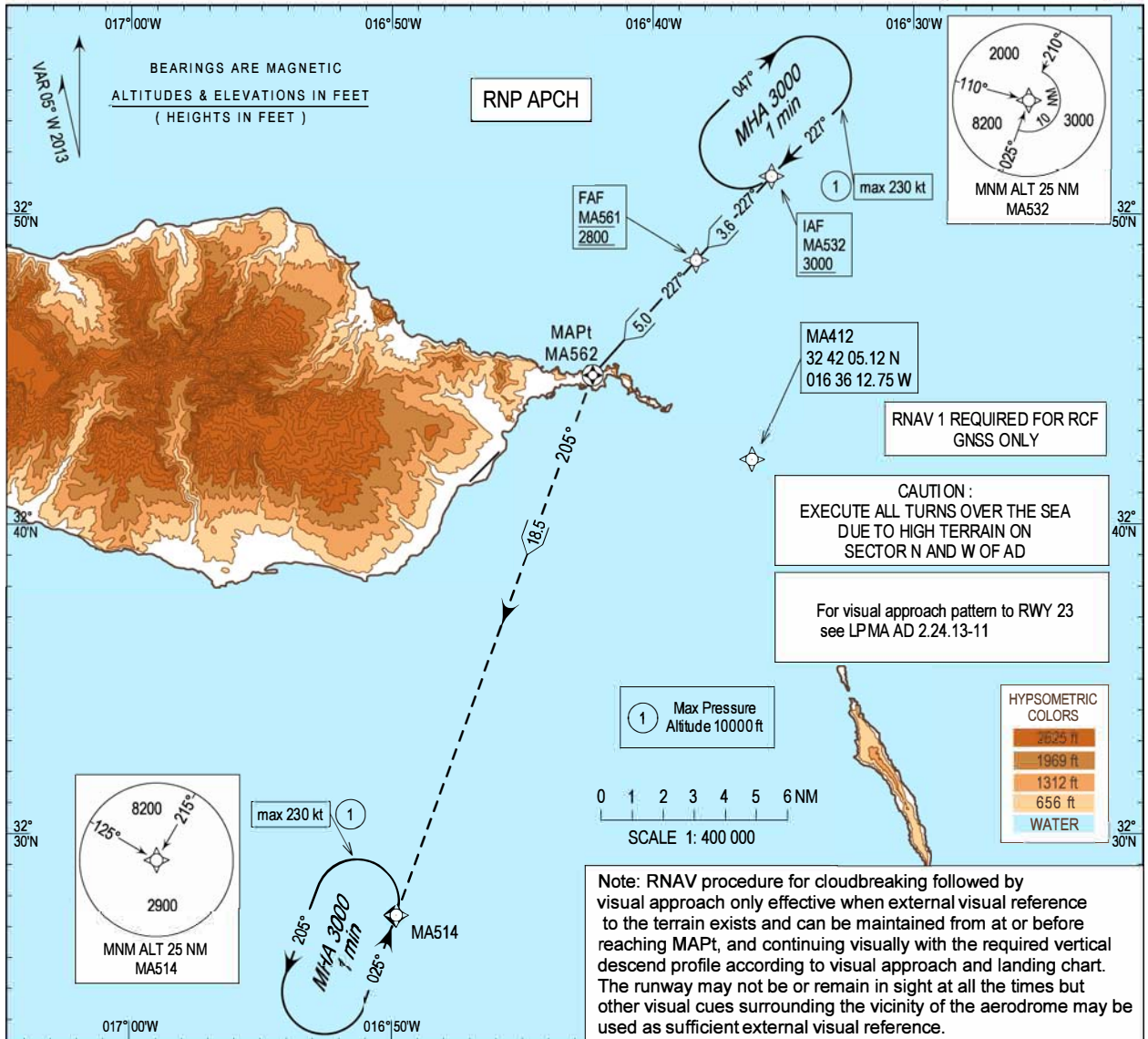


INSTRUMENT APPROACH CHART - ICAO
AD ELEV 191 ft
HEIGHTS RELATED THR RWY 23 - ELEV 191 ft

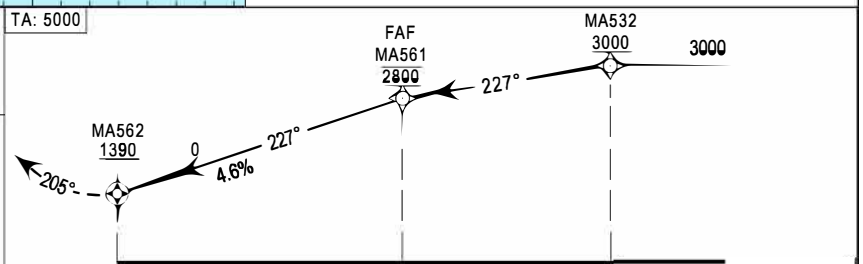
MADEIRA INFORMATION 130.355
MADEIRA APPROACH 119.605
MADEIRA TOWER 118.355

MADEIRA / LPMA
RNP RWY23-b



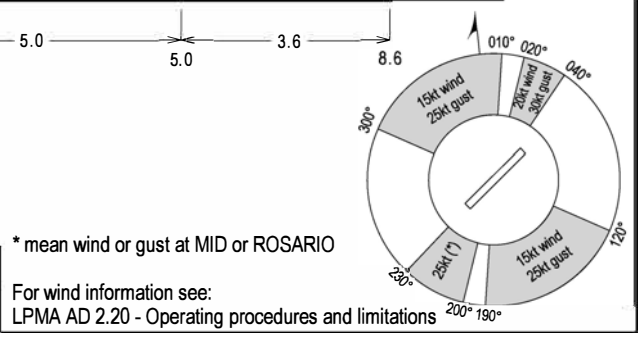
MISSED APPROACH
Turn left to MA514 climbing to 3000 ft.
At MA514 hold or follow ATC instructions.

RCF: Squawk 7600. Proceed as above.
On MA514 holding proceed to MA412 then to MA532 holding, make one complete holding pattern at 3000 ft to perform another RNP RWY23-b approach.



| CATEGORY | MINIMA | | | |
|----------|---------------|-------------|--------|--------------|
| | A - B - C - D | MDA (H) | VIS | CEILING |
| CIRCLING | | 1390 (1199) | 7000 m | 1200 / 370 m |

| MA561 - MA562 (NM) | MINIMA | | | | | | | |
|------------------------|-------------|-------------|-------------|-------------|-------------|-----|-----|------|
| | 5 | 4 | 3 | 2 | 1 | | | |
| ALTITUDE (HEIGHT) | 2800 (2609) | 2521 (2330) | 2242 (2051) | 1900 (1754) | 1600 (1454) | | | |
| Speed | kt | 80 | 100 | 120 | 140 | 160 | 180 | 200 |
| Rate of descent (5.0%) | ft / min | 400 | 500 | 600 | 700 | 800 | 900 | 1000 |



* mean wind or gust at MID or ROSARIO
For wind information see:
LPMA AD 2.20 - Operating procedures and limitations

Wind limitations representation changed. RCF.

LPMA RNP RWY 23 – b

| Path Terminator | Waypoint | | | | Course/Track MAG (True) | Dist NM | Turn Direction | Altitude | Speed | RNP Value NM | Navigation Specification | Remarks |
|-----------------|------------|------|---------|---------------------------|-------------------------|---------|----------------|----------|-------|--------------|--------------------------|---------|
| | Identifier | Type | Flyover | Coordinates | | | | | | | | |
| IF | MA532 | IAF | - | 325114.86N 0163528.64W | - | - | - | +3000FT | 230KT | 1.0 | RNP APCH | - |
| TF | MA561 | FAF | - | 324832.27N 0163821.97W | 227 (222.0) | 3.64 | - | @2800FT | - | 0.3 | RNP APCH | - |
| TF | MA562 | MAPT | Y | 324449.81N 0164219.63W | 227 (222.1) | 4.98 | - | - | - | 1.0 | RNP APCH | - |
| TF | MA514 | - | - | 322722.93N 0164949.39W | 205 (200.0) | 18.53 | L | +3000FT | 230KT | 1.0 | RNP APCH | - |
| HM | MA514 | - | - | 322722.93N 0164949.39W | - | - | L | +3000FT | 230KT | 1.0 | RNP APCH | - |

RNAV HOLDING

| HLDG ID | Inbound Track MAG (true) | Turn Direction | MAX IAS (KT) | MAX/MNM HLDG ALT FL/FT (MSL) | TIME (MIN) or DIST Outbound | Controlling Unit |
|---------|--------------------------|----------------|--------------|------------------------------|-----------------------------|------------------|
| MA532 | 227 (222.0) | R | 230 | FL100 / 3000FT | 1 MIN | Madeira TWR |
| MA514 | 025 (020.0) | L | 230 | FL100 / 3000FT | 1 MIN | Madeira TWR |