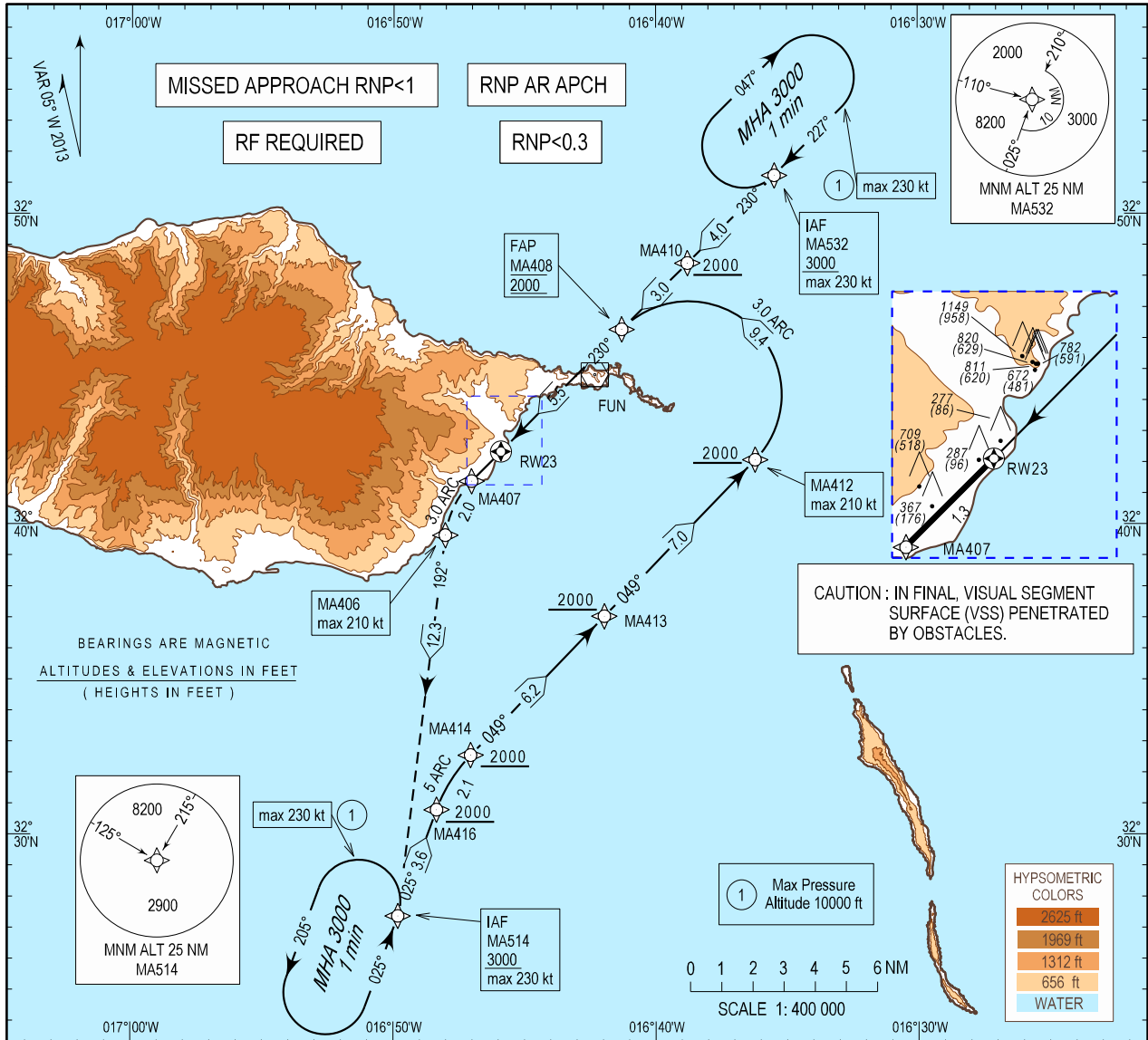


INSTRUMENT
APPROACH
CHART - ICAO

AD ELEV 191 ft
HEIGHTS RELATED
THR RWY 23 - ELEV 191 ft

MADEIRA INFORMATION 130.355
MADEIRA APPROACH 119.605
MADEIRA TOWER 118.355

MADEIRA / LPMA
RNP RWY 23 (AR)



MISSED APPROACH

Climb to 3000 ft via the RNP missed approach track MA407 - MA406 to MA514. At MA514 hold or follow ATC instructions.

RCF: Squawk 7600. Proceed as above. On MA514 holding, make one complete holding pattern at 3000 ft and then proceed to perform RNP RWY23 Procedure.

② RNP 0.1/0.2 is required until MA406

TA: 5000
RWY23
BARO-VNAV MINIMUM TEMPERATURE : +7.5°C
RDH:50
THR: 191

FAP MA408 2000
MA410
MA412 2000
MA413
MA414
MA416
MA417

| | CAT A | | CAT B | | CAT C | | CAT D | |
|-----------|------------|-----|------------|-----|------------|------|------------|------|
| | DA(H) | OCH | DA(H) | OCH | DA(H) | OCH | DA(H) | OCH |
| RNP 0.3 | 1160 (969) | 965 | 1180 (989) | 986 | 1200(1009) | 1005 | 1220(1029) | 1023 |
| ② RNP 0.2 | 920 (729) | 727 | 940 (749) | 748 | 960 (769) | 767 | 980 (789) | 782 |
| ② RNP 0.1 | 490 (299) | 295 | 490 (299) | 295 | 490 (299) | 295 | 490 (299) | 295 |

* mean wind or gust at MID or ROSARIO
For wind information see: LPMA AD 2.20 - Operating procedures and limitations

Wind limitations representation changed.

**Instrument Approach Procedure Coding
Table Madeira RNP RWY 23 (AR)**

| Path Terminator | Waypoint | | | | Course/Track MAG (True) | Dist NM | Turn Direction | ARC Centre Waypoint | | ARC Radius NM |
|-----------------|------------|------|---------|-------------------------------|----------------------------|---------|----------------|---------------------|-------------------------------|---------------------|
| | Identifier | Type | Flyover | Coordinates | | | | Identifier | Coordinates | |
| IF | MA532 | IAF | - | 325114.8570N 0163528.6380W | - | - | - | - | - | - |
| TF | MA410 | IF | - | 324825.4460N 0163847.6060W | 230.023 (224.773) | 3.969 | - | - | - | - |
| TF | MA408 | FAP | - | 324617.2640N 0164118.0750W | 230.018 (224.768) | 3.003 | - | - | - | - |
| IF | MA514 | IAF | - | 322722.9270N 0164949.3940W | - | - | - | - | - | - |
| TF | MA416 | - | - | 323048.4390N 0164821.1100W | 025.250 (020.000) | 3.638 | - | - | - | - |
| RF | MA414 | - | - | 323233.9600N 0164703.4050W | - | 2.084 | R | MAC07 | 322905.4370N 0164247.8600W | 5.000 |
| TF | MA413 | - | - | 323702.6510N 0164157.7410W | 049.153 (043.903) | 6.205 | - | - | - | - |
| TF | MA412 | IF | - | 324205.1230N 0163612.7530W | 049.198 (043.948) | 6.991 | - | - | - | - |
| RF | MA408 | FAP | - | 324617.2640N 0164118.0750W | - | 9.385 | L | MAC08 | 324410.3410N 0163846.3850W | 3.000 |
| TF | RW23 | MAPT | Y | 324221.0289N 0164554.5412W | 229.956 (224.706) | 5.527 | - | - | - | - |
| TF | MA407 | - | - | 324123.7530N 0164701.5045W | 229.929 (224.679) | 1.340 | - | - | - | - |
| RF | MA406 | - | - | 323939.2330N 0164801.4550W | - | 1.967 | L | MAC05 | 323916.9370N 0164429.8820W | 3.000 |
| TF | MA514 | - | - | 322722.9270N 0164949.3940W | 192.335 (187.085) | 12.341 | - | - | - | - |
| HM | MA514 | - | - | 322722.9270N 0164949.3940W | - | - | L | - | - | - |

| Waypoint Identifier | Altitude | Speed | RNP Value NM | Navigation Specification | Remarks |
|---------------------|----------|-------|--------------|--------------------------|---------|
| MA532 | +3000 | 230KT | 0.3 | RNP PARAPCH | - |
| MA410 | +2000 | - | 0.3 | RNP PARAPCH | - |
| MA408 | @2000 | - | 0.3/0.2/0.1 | RNP PARAPCH | - |
| MA514 | +3000 | 230KT | 0.3 | RNP PARAPCH | - |
| MA416 | +2000 | - | 0.3 | RNP PARAPCH | - |
| MA414 | +2000 | - | 0.3 | RNP PARAPCH | - |
| MA413 | +2000 | - | 0.3 | RNP PARAPCH | - |
| MA412 | +2000 | 210KT | 0.3 | RNP PARAPCH | - |
| MA408 | @2000 | - | 0.3/0.2/0.1 | RNP PARAPCH | - |
| RW23 | - | - | 0.3/0.2/0.1 | RNP PARAPCH | - |
| MA407 | - | - | 0.3/0.2/0.1 | RNP PARAPCH | - |
| MA406 | - | 210KT | 0.3/0.2/0.1 | RNP PARAPCH | - |
| MA514 | +3000 | - | 0.3 | RNP PARAPCH | - |
| MA514 | +3000 | - | 0.3 | RNP PARAPCH | - |

RNAV Holding

| HLDG ID | INBD TRACK MAG (TRUE) | Turn Direction | MAX IAS (KT) | MAX/MNM HLDG ALT FL/FT(MSL) | TIME (MIN) or DIST OUBD | Controlling Unit |
|---------|-----------------------------|-------------------|--------------|--------------------------------|----------------------------|------------------|
| MA532 | 227.250 (222.000) | R | 230 | FL100 / 3000FT | 1 MIN | Madeira TWR |
| MA514 | 025.250 (020.000) | L | 230 | FL100 / 3000FT | 1 MIN | Madeira TWR |