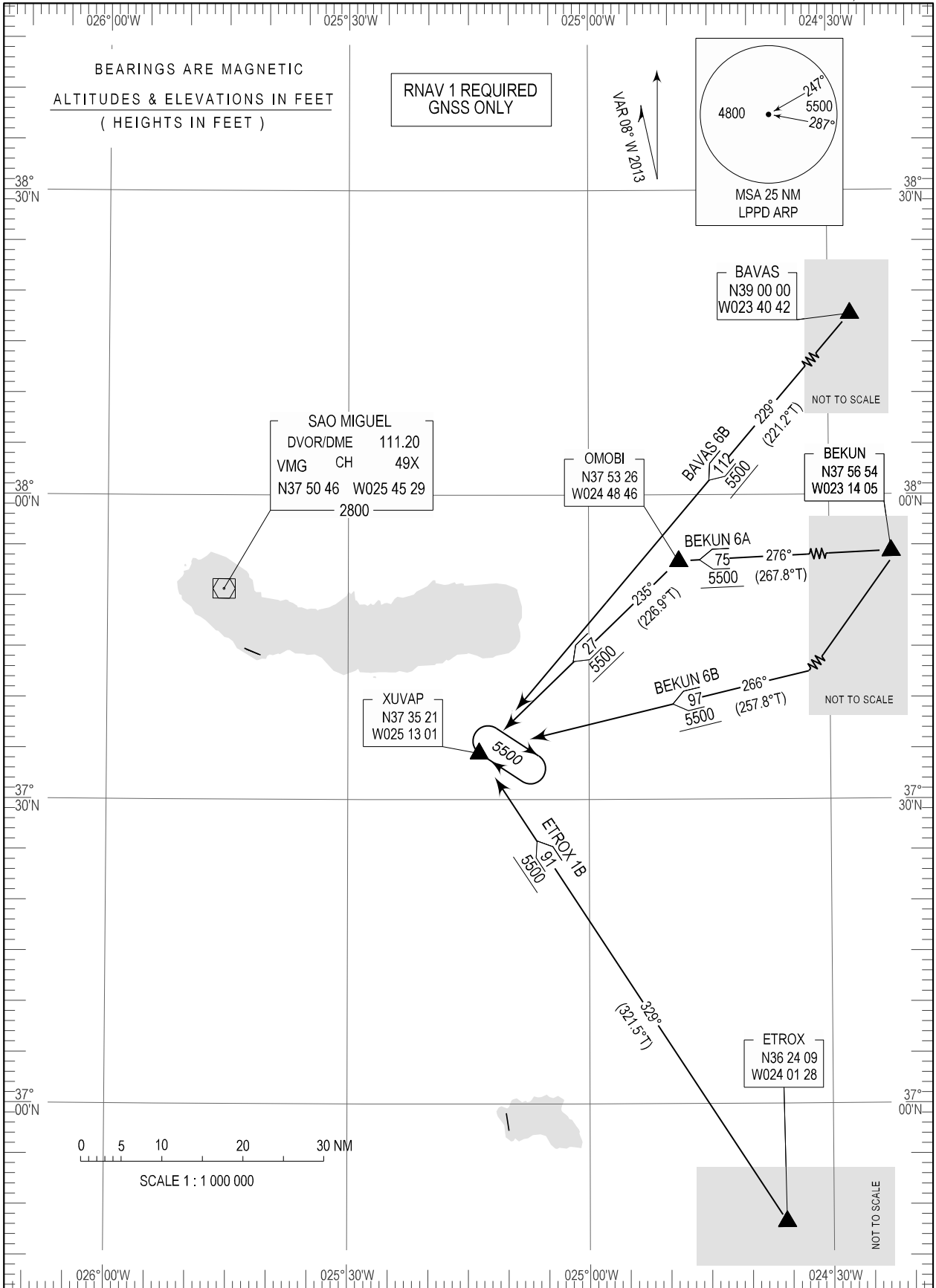


STANDARD ARRIVAL CHART -
INSTRUMENT (STAR) - ICAO

TRANSITION ALTITUDE	APP	119.400
6000	TWR	118.300

PONTA DELGADA (LPPD)
RNAV RWY 30
BAVAS 6B, BEKUN 6A
BEKUN 6B, ETROX 1B



MSA changed.

Ponta Delgada STAR RNAV RWY 30

Procedure Coding Table
STAR RNAV 1 BAVAS6B

Path Terminator	Waypoint			Course/Track MAG(True)	DISTNM	Turn Direction	Constraints		Navigation Specification	Remarks
	Identifier	Flyover	Coordinates				Level	Speed		
IF	BAVAS	-	390000.00N 0234042.07W	-	-	-	+5500 FT	-	RNAV 1	Clearancelimit:Holding XUVAP.
TF	XUVAP	-	373521.17N 0251300.95W	229 (221.2)	111.49	-	+5500 FT	-	RNAV 1	

Procedure Coding Table
STAR RNAV 1 BEKUN6A

Path Terminator	Waypoint			Course/Track MAG(True)	DISTNM	Turn Direction	Constraints		Navigation Specification	Remarks
	Identifier	Flyover	Coordinates				Level	Speed		
IF	BEKUN	-	375653.77N 0231404.64W	-	-	-	+5500 FT	-	RNAV 1	Clearancelimit:Holding XUVAP.
TF	OMOBI	-	375326.46N 0244845.58W	276 (267.8)	75.00	-	+5500 FT	-	RNAV 1	
TF	XUVAP	-	373521.17N 0251300.95W	235 (226.9)	26.39	Left	+5500 FT	-	RNAV 1	

Procedure Coding Table
STAR RNAV 1 BEKUN6B

Path Terminator	Waypoint			Course/Track MAG(True)	DISTNM	Turn Direction	Constraints		Navigation Specification	Remarks
	Identifier	Flyover	Coordinates				Level	Speed		
IF	BEKUN	-	375653.77N 0231404.64W	-	-	-	+5500 FT	-	RNAV 1	Clearancelimit:Holding XUVAP.
TF	XUVAP	-	373521.17N 0251300.95W	266 (257.8)	96.73	-	+5500 FT	-	RNAV 1	

Procedure Coding Table
STAR RNAV 1 ETROX1B

Path Terminator	Waypoint			Course/Track MAG (True)	DISTNM	Turn Direction	Constraints		Navigation Specification	Remarks
	Identifier	Flyover	Coordinates				Level	Speed		
IF	ETROX	-	362409.22N 0240128.49W	-	-	-	+5500 FT	-	RNAV 1	Clearancelimit: Holding XUVAP
TF	XUVAP	-	373521.17N 0251300.95W	329 (321.5)	91.33	-	+5500 FT	-	RNAV 1	