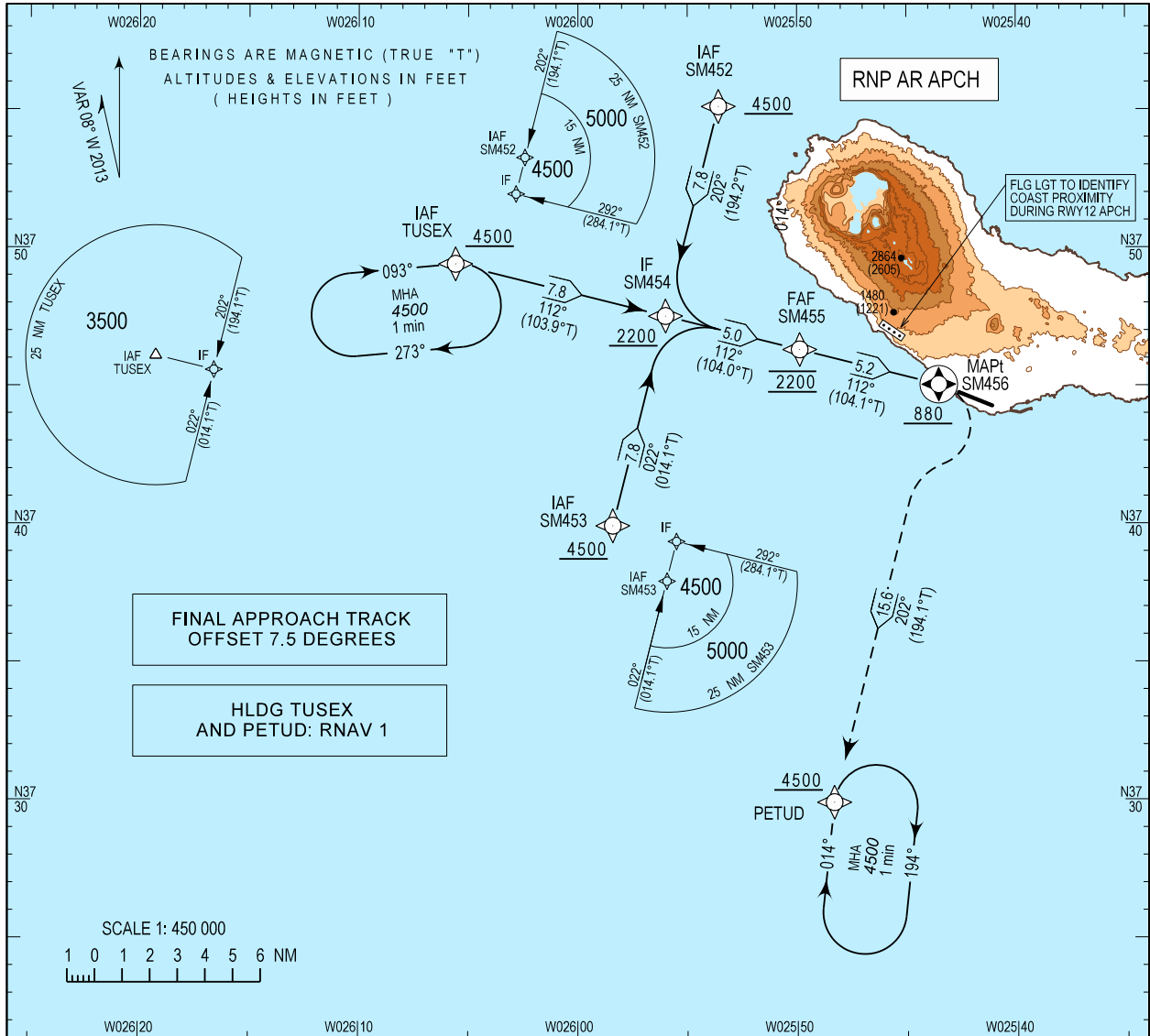


INSTRUMENT  
APPROACH  
CHART - ICAO

AD ELEV 259 ft  
HEIGHTS RELATED  
THR RWY 12 - ELEV 259 ft

ATIS 123.900  
APP 119.400  
TWR 118.300

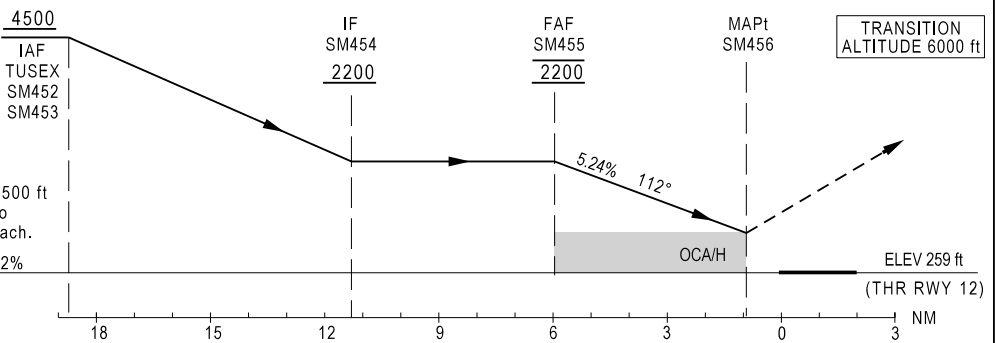
PONTA DELGADA / LPPD  
RNP Z RWY12 (LNAV only)



MISSED APPROACH  
At MAPt turn right to  
PETUD Holding.  
Climb to 4500 ft.  
CTC APP.

RCF: Squawk 7600.  
Proceed as above.  
On PETUD holding make one  
complete holding pattern at 4500 ft  
and then proceed to SM453 to  
perform another GNSS approach.

PAPI 5.2%



CAT	LNAV		CIRCLING RWY12		VISIBILITY (metres)
	DA/H	OCH	NORTH MDA/H	SOUTH MDA/H	
A					2400
B	880 (621)	620	NOT AUTHORIZED	880 (621)	3600
C					4000
D					

DIST THR NM	5	4	3	2
Altitude (height)	1903 (1644)	1585 (1326)	1267 (1008)	949 (690)

rate of descent	kt	160	140	120	100	80
	ft/min	850	740	640	530	420

Chart identification changed.

Instrument Approach Procedure Coding Table  
LPPD RNP Z RWY12 (LNAV ONLY)

Path Terminator	Waypoint				Course/Track MAG (True)	Dist NM	Turn Direction	Altitude	Speed	RNP Value NM	Navigation Specification	Remarks
	Identifier	Type	Flyover	Coordinates								
IF	TUSEX	IAF	NO	374925.22N 0260534.76W	-	-	-	+4500ft	-	1.0	RNP AR APCH	-
TF	SM454	IF	NO	374731.79N 0255600.12W	112 (103.9)	7.82	-	+2200ft	-	1.0	RNP AR APCH	-
IF	SM452	IAF	NO	375507.33N 0255335.17W	-	-	-	+4500ft	-	1.0	RNP AR APCH	-
TF	SM454	IF	NO	374731.79N 0255600.12W	202 (194.2)	7.82	L	+2200ft	-	1.0	RNP AR APCH	-
IF	SM453	IAF	NO	373956.20N 0255824.57W	-	-	-	+4500ft	-	1.0	RNP AR APCH	-
TF	SM454	IF	NO	374731.79N 0255600.12W	022 (014.1)	7.82	R	+2200ft	-	1.0	RNP AR APCH	-
IF	SM454	IF	NO	374731.79N 0255600.12W	-	-	-	+2200ft	-	1.0	RNP AR APCH	-
TF	SM455	FAF	NO	374618.88N 0254953.02W	112 (104.0)	5.00	-	@2200ft	-	0.3	RNP AR APCH	-
TF	SM456	MAPt	YES	374502.94N 0254332.65W	112 (104.1)	5.18	R	+880ft	-	1.0	RNP AR APCH	-
TF	PETUD	MAHP	NO	372954.83N 0254819.91W	202 (194.1)	15.59	-	+4500ft	-	1.0	RNP AR APCH	-
HM	PETUD	-	NO	372954.83N 0254819.91W	-	-	-	+4500ft	-	1.0	RNAV	-