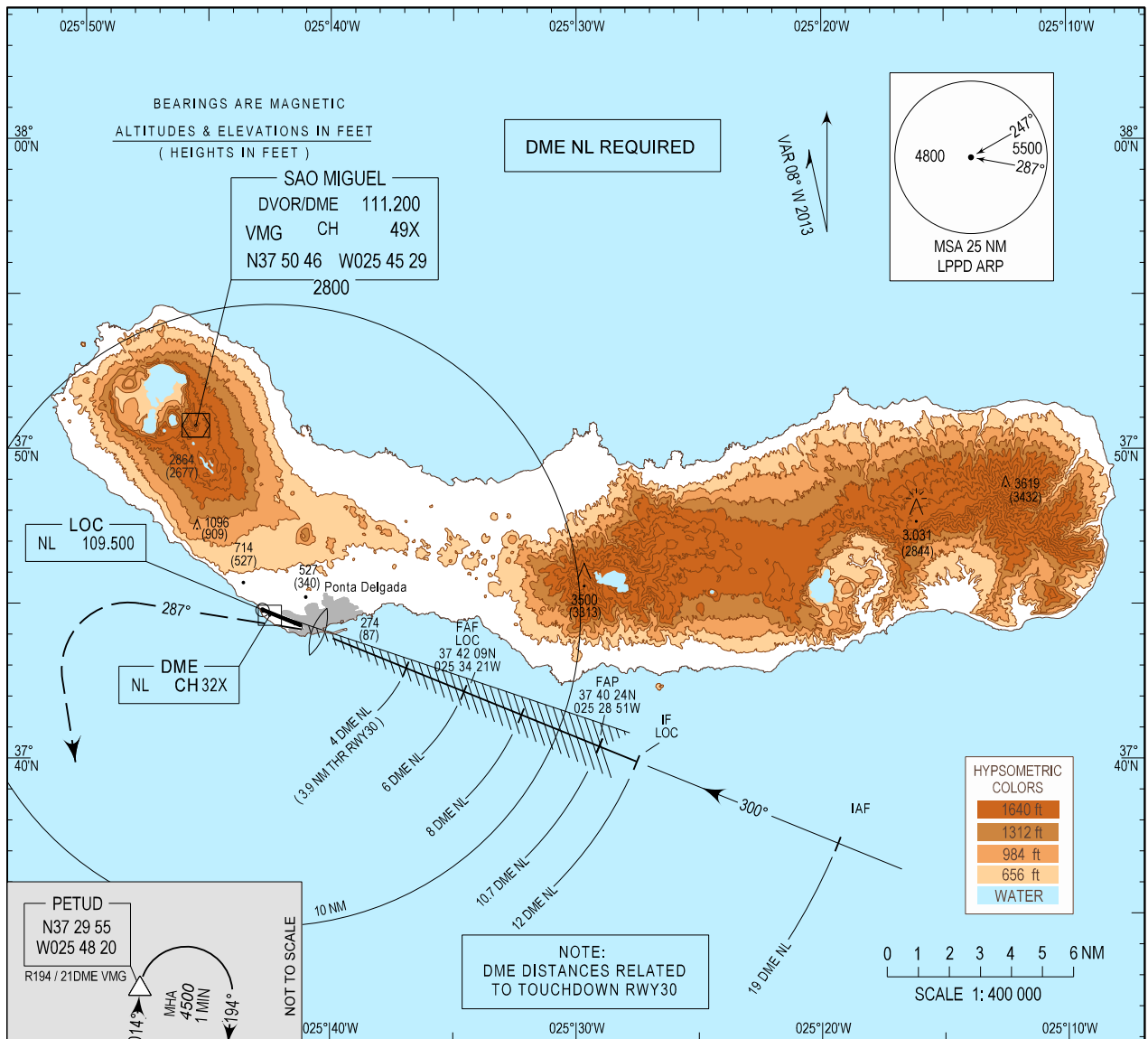


INSTRUMENT APPROACH CHART - ICAO

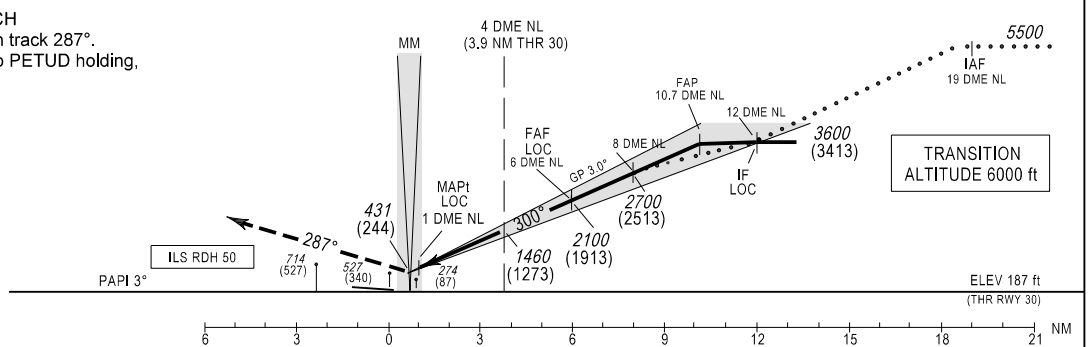
AD ELEV 259 ft  
HEIGHTS RELATED  
THR RWY 30 - ELEV 187 ft

ATIS 123.900  
APP 119.400  
TWR 118.300

PONTA DELGADA/LPPD  
ILS-Z or LOC  
RWY 30  
CAT C-D



**MISSED APPROACH**  
Turn left climbing on track 287°. At 2000 ft turn left to PETUD holding, climbing to 4500 ft. CTC APP.



CAT	ILS CAT I		LOC		CIRCLING RWY30	
	DA/H	OCH	MDA/H	OCH	NORTH MDA/H	SOUTH MDA/H
C	430 (243)	241	530 (350)	350	850 (591)	NOT AUTHORIZED
D	440 (253)	251	530 (350)	350	950 (691)	NOT AUTHORIZED

DME-NL	LOC 5.2%						
	8	7	6	5	4	3	2
Altitude (Height)	2700 (2513)	2400 (2213)	2100 (1913)	1780 (1593)	1460 (1273)	1145 (958)	825 (638)

Rate of descend (5,2%)	ft/min	kt						
		100	120	140	160	180	200	220
		525	630	735	840	945	1050	1160

Vertical profile MAPt.

THIS PAGE INTENTIONALLY LEFT BLANK