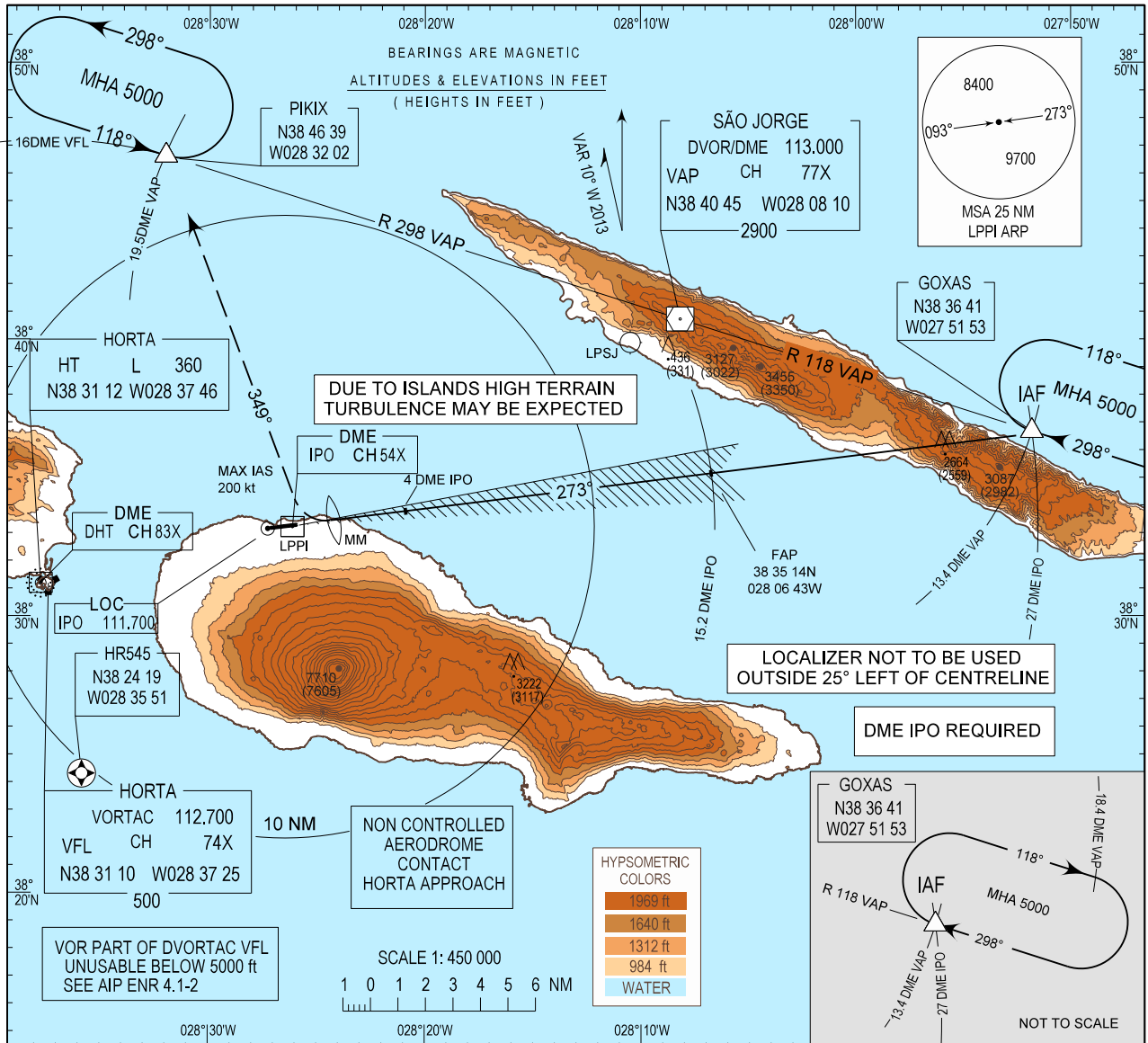


INSTRUMENT APPROACH CHART - ICAO
AD ELEV 114 ft
HEIGHTS RELATED
THR RWY 27 - ELEV 105 ft

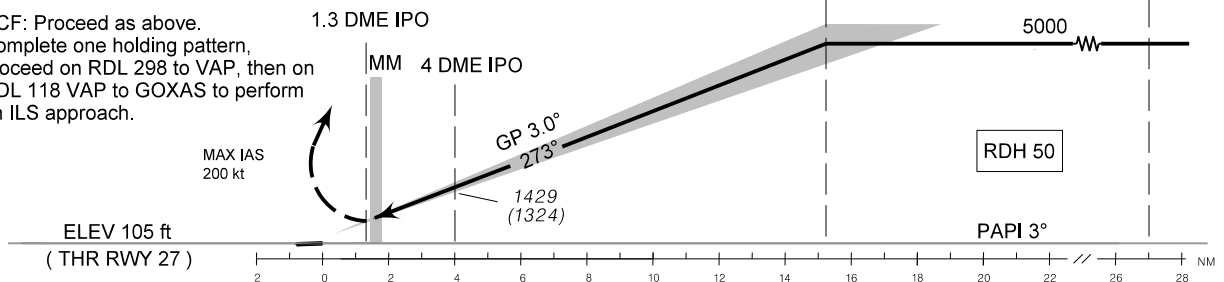
PICO INFORMATION 122.700
HORTA APPROACH 120.600
HORTA TOWER 118.000
SANTA MARIA RADAR 132.150

PICO / LPPI
ILS
RWY27



MISSED APPROACH:
At 1.3 DME IPO turn right on heading 349° climbing to 5000 ft then proceed to holding PIKIX on RDL 298 VAP. Maximum IAS on turn 200 kt. CTC Horta APP.

RCF: Proceed as above. Complete one holding pattern, proceed on RDL 298 to VAP, then on RDL 118 VAP to GOXAS to perform an ILS approach.



CAT	ILS CAT I		CIRCLING RWY27			
	DA/H	OCH	NORTH		SOUTH	
			MDA/H	OCH	MDA/H	OCH
A	520 (415)	407	1060 (946)	940	NOT AUTHORIZED	
B	520 (415)	407	1060 (946)	940	NOT AUTHORIZED	
C	520 (415)	407	1210 (1096)	1090	NOT AUTHORIZED	

NM	DIST DME IPO														
	2	3	4	5	6	7	8	9	10	11	12	13	14	15	
ALTITUDE (HEIGHT)	792 (687)	1110 (1005)	1429 (1324)	1747 (1642)	2066 (1961)	2384 (2279)	2703 (2598)	3021 (2916)	3340 (3235)	3658 (3553)	3976 (3871)	4295 (4190)	4613 (4508)	4932 (4827)	