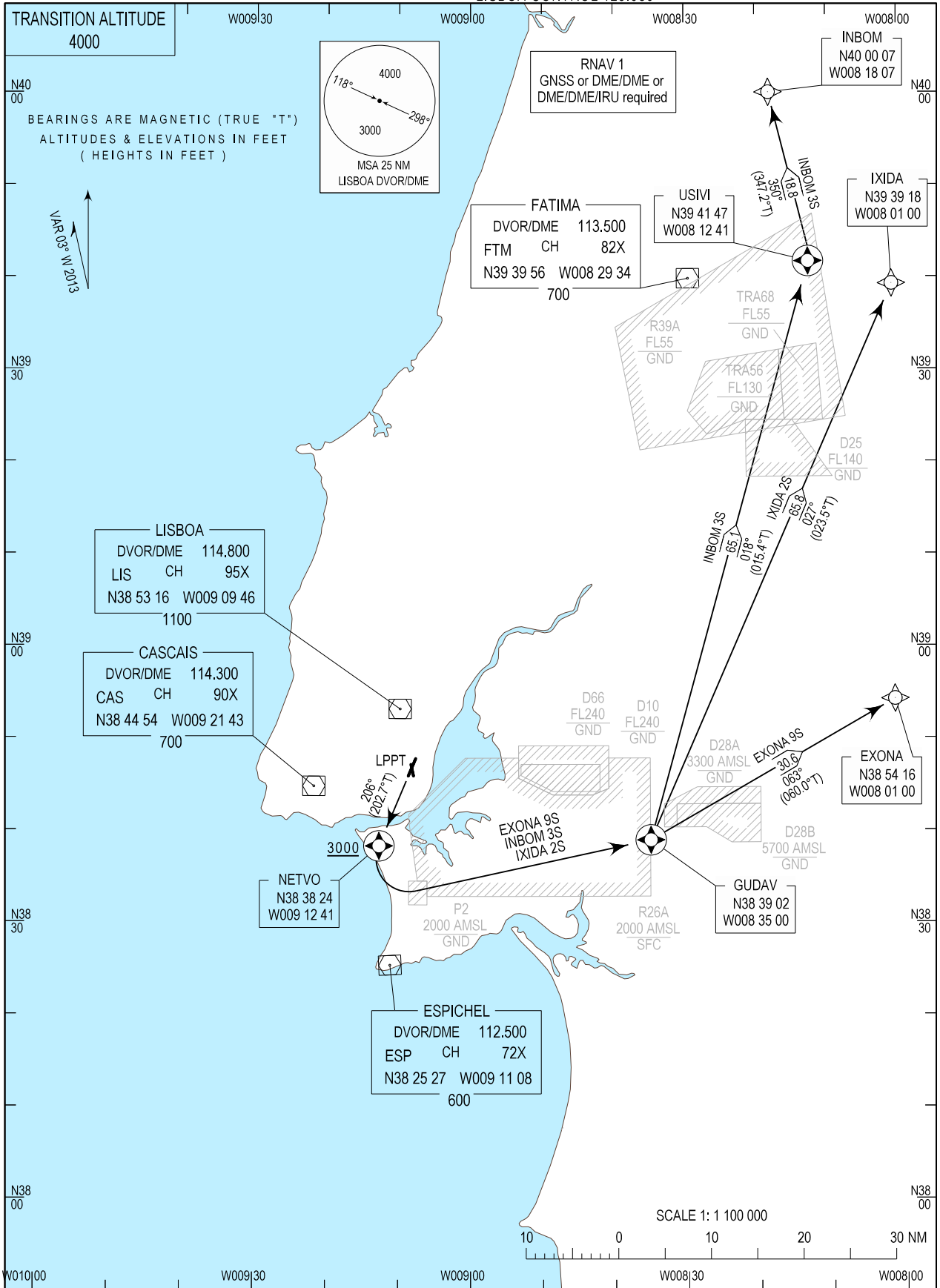


STANDARD DEPARTURE CHART - INSTRUMENT (SID) - ICAO

LISBOA DEP INFORMATION 121.955  
LISBOA TOWER 118.105  
LISBOA APPROACH 119.105  
LISBOA CONTROL 123.980

LISBOA / LPPT  
RNAV RWY21  
EXONA 9S, INBOM 3S, IXIDA 2S



SID Procedure Coding Table										
Lisboa SID RNAV 1 RWY 21 - EXONA 9S										
Path Terminator	Waypoint			Course/Track MAG (True)	Dist NM	Turn Direction	Constraints		Nav Specs	Remarks
	Identifier	Flyover	Coordinates				Level	Speed		
CF	NETVO	Yes	383824.16N 0091241.03W	206 (202.7)	–	–	+3000	–	RNAV 1	–
DF	GUDAV	Yes	383901.57N 0083500.25W	–	–	Left	–	–	RNAV 1	
TF	EXONA	–	385415.89N 0080100.00W	063 (060.0)	30.64	Left	–	–	RNAV 1	

Designator	Route	After Take-off		Remarks
		Climb to ALT/FL	Contact	
EXONA9S	Climb straight ahead to NETVO. Turn left to GUDAV- EXONA.	FL060	LISBOA APPROACH. When passing 1000ft QNH mentioning only the call sign and passing altitude. 119.105 MHz as announced by ATIS departure.	Above FL245 to UREDI and OGERO.Below FL245 to PORTA.

SID Procedure Coding Table										
Lisboa SID RNAV 1 RWY 21 - INBOM 3S										
Path Terminator	Waypoint			Course/Track MAG (True)	Dist NM	Turn Direction	Constraints		Nav Specs	Remarks
	Identifier	Flyover	Coordinates				Level	Speed		
CF	NETVO	Yes	383824.16N 0091241.03W	206 (202.7)	–	–	+3000	–	RNAV 1	–
DF	GUDAV	Yes	383901.57N 0083500.25W	–	–	Left	–	–	RNAV 1	
TF	USIVI	Yes	394147.14N 0081241.32W	018 (015.35)	65.06	–	–	–	RNAV 1	
TF	INBOM	–	400006.91N 0081807.21W	350 (347.2)	18.79	Left	–	–	RNAV 1	

Designator	Route	After Take-off		Remarks
		Climb to ALT/FL	Contact	
INBOM3S	Climb straight ahead to NETVO. Turn left to GUDAV – USIVI– INBOM.	FL060	LISBOA APPROACH. When passing 1000ft QNH mentioning only the call sign and passing altitude. 119.105 MHz as announced by ATIS departure.	–

SID Procedure Coding Table										
Lisboa SID RNAV 1 RWY 21 - IXIDA 2S										
Path Terminator	Waypoint			Course/Track MAG (True)	Dist NM	Turn Direction	Constraints		Nav Specs	Remarks
	Identifier	Flyover	Coordinates				Level	Speed		
CF	NETVO	Yes	383824.16N 0091241.03W	206 (202.7)	–	–	+3000	–	RNAV 1	–
DF	GUDAV	Yes	383901.57N 0083500.25W	–	–	Left	–	–	RNAV 1	
TF	IXIDA	–	393918.46N 0080100.00W	027 (023.5)	65.78	Left	–	–	RNAV 1	

Designator	Route	After Take-off		Remarks
		Climb to ALT/FL	Contact	
IXIDA2S	Climb straight ahead to NETVO. Turn left to GUDAV– IXIDA.	FL060	LISBOA APPROACH. When passing 1000ft QNH mentioning only the call sign and passing altitude. 119.105 MHz as announced by ATIS departure.	Above FL245 to TOSDI.Below FL245 to RIVRO.