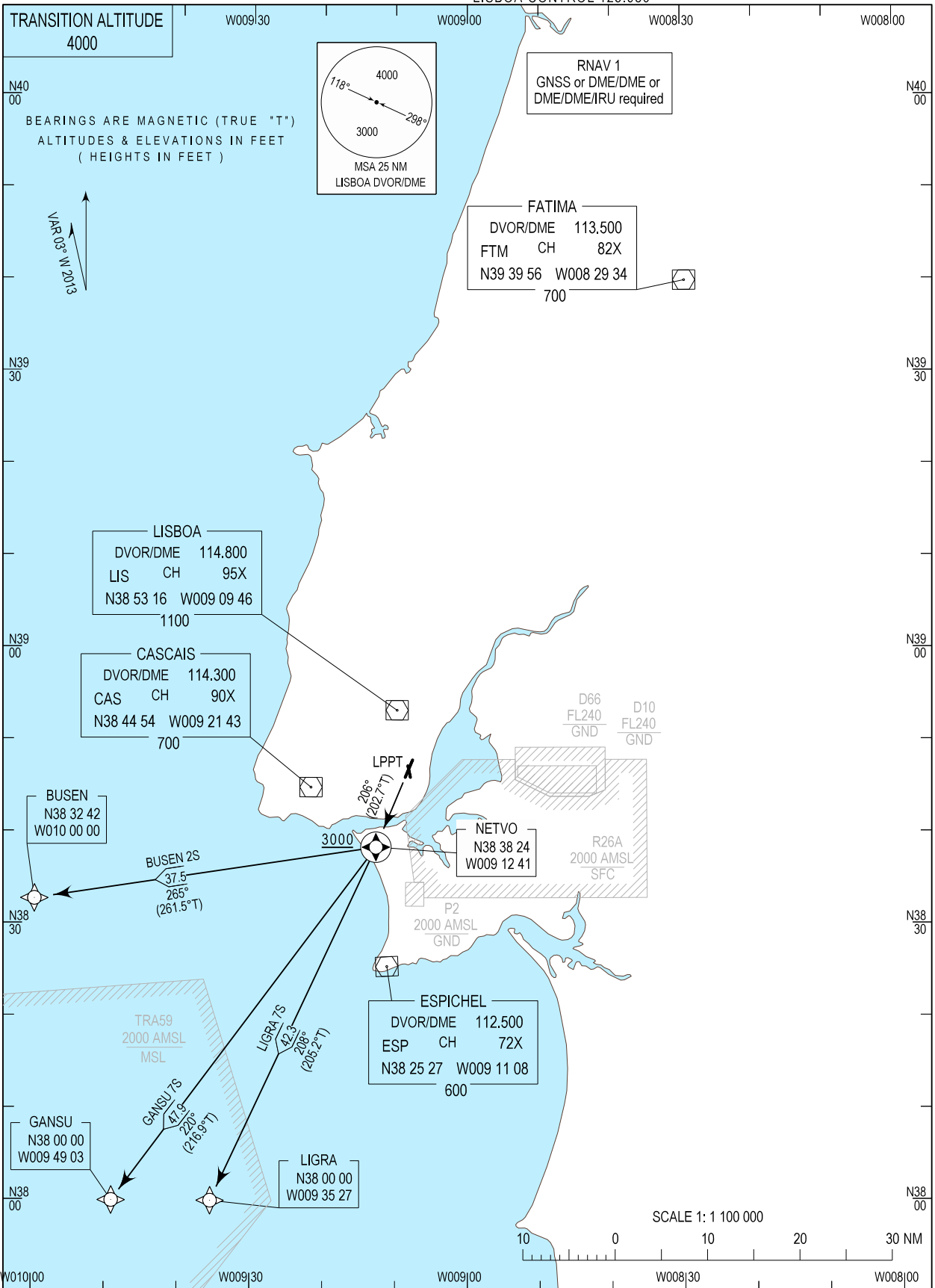


STANDARD DEPARTURE CHART -  
INSTRUMENT (SID) - ICAO

LISBOA DEP INFORMATION 121.955  
LISBOA TOWER 118.105  
LISBOA APPROACH 119.105  
LISBOA CONTROL 123.980

LISBOA / LPPT  
RNAV RWY21  
BUSEN 2S, GANSU 7S, LIGRA 7S



New CS and FREQ. Chart redrawn.

SID Procedure Coding Table

Lisboa SID RNAV 1 RWY 21 BUSEN2S

Path Terminator	Waypoint			Course/Track MAG (True)	Dist NM	Turn Direction	Constraints		Nav Specs	Remarks
	Identifier	Flyover	Coordinates				Level	Speed		
CF	NETVO	Yes	383824.16N 0091241.03W	206 (202.7)	–	–	+3000'	–	RNAV 1	–
TF	BUSEN	–	383241.98N 0100000.00W	265 (261.5)	37.53	Right	–	–	RNAV 1	

Designator	Route	After Take-off		Remarks
		Climb to ALT/FL	Contact	
BUSEN2S	Climb straight ahead to NETVO. Turn right to BUSEN.	FL060	LISBOA APPROACH. When passing 1000ft QNH mentioning only the call sign and passing altitude. 119.105 MHz as announced by ATIS departure.	Critical DME: ESP, MTR and NSA at FL060 until 60 NM.

SID Procedure Coding Table

Lisboa SID RNAV 1 RWY 21 GANSU7S

Path Terminator	Waypoint			Course/Track MAG (True)	Dist NM	Turn Direct	Constraints		Nav Specs	Remarks
	Identifier	Flyover	Coordinates				Level	Speed		
CF	NETVO	Yes	383824.16N 0091241.03W	206 (202.7)	–	–	+3000'	–	RNAV 1	–
TF	GANSU	–	380000.00N 0094903.18W	220 (216.9)	47.86	Right	–	–	RNAV 1	

Designator	Route	After Take-off		Remarks
		Climb to ALT/FL	Contact	
GANSU7S	Climb straight ahead to NETVO. Turn right to GANSU.	FL060	LISBOA APPROACH. When passing 1000ft QNH mentioning only the call sign and passing altitude. 119.105 MHz as announced by ATIS departure.	–

SID Procedure Coding Table

Lisboa SID RNAV 1 RWY 21 LIGRA7S

Path Terminator	Waypoint			Course/Track MAG (True)	Dist NM	Turn Direction	Constraints		Nav Specs	Remarks
	Identifier	Flyover	Coordinates				Level	Speed		
CF	NETVO	Yes	383824.16N 0091241.03W	206 (202.7)	–	–	+3000'	–	RNAV 1	–
TF	LIGRA	–	380000.00N 0093527.06W	208 (205.2)	42.34	–	–	–	RNAV 1	

Designator	Route	After Take-off		Remarks
		Climb to ALT/FL	Contact	
LIGRA7S	Climb straight ahead to NETVO – LIGRA.	FL060	LISBOA APPROACH. When passing 1000ft QNH mentioning only the call sign and passing altitude. 119.105 MHz as announced by ATIS departure.	–